

RNAV (GPS) RWY 35L

GRAND FORKS INTL (GFK)

WAAS CH 70313 W35A	APP CRS 354°	Rwy Idg TDZE Apt Elev	7349 845 845
--	------------------------	-----------------------------	---

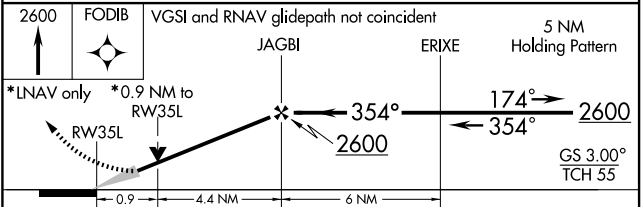
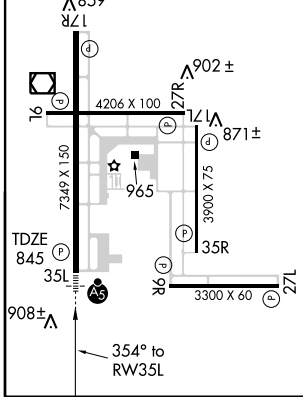
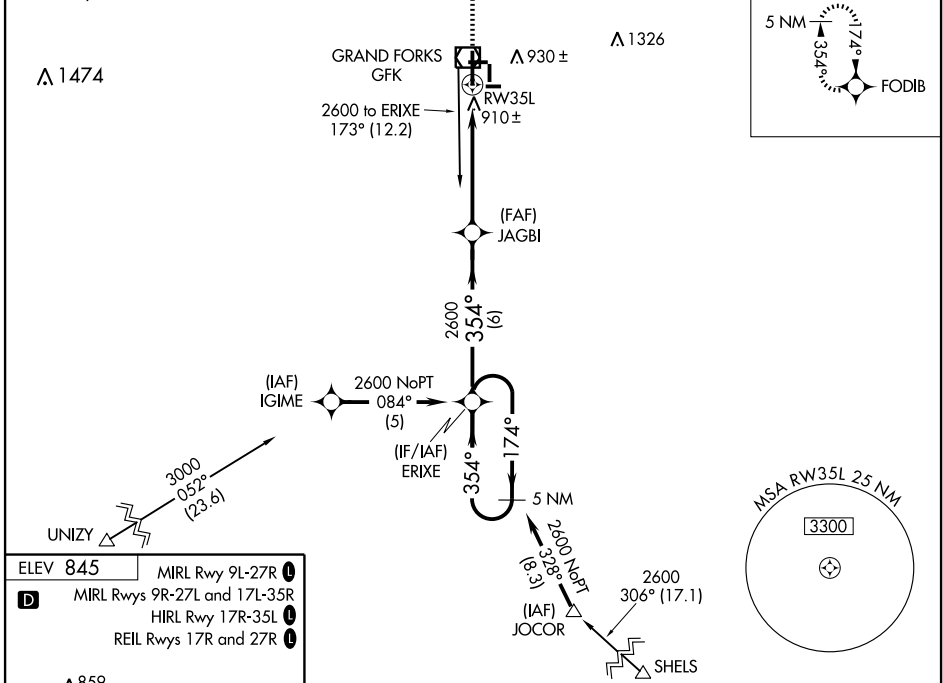
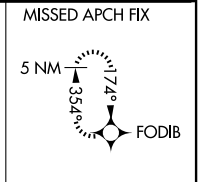
⚠ DME/DME RNP -0.3 NA. Inoperative table does not apply to LNAV Cat D.
⚠ If local altimeter setting not received, use Crookston altimeter setting and increase all DAs/MDAs 80 feet.
 VDP NA when using Crookston altimeter setting. Baro-VNAV NA below -16°C (4°F).
 Baro-VNAV NA when using Crookston altimeter setting.
 For inoperative MALSR increase LPV all Cats visibility to 1.

MALSR 

MISSED APPROACH: Climb to 2600 direct FODIB and hold.

ATIS 119.4	GRAND FORKS APP CON 118.1 318.1	GRAND FORKS TOWER * 118.4 (CTAF) 0 350.35	GND CON 124.575	UNICOM 122.95
----------------------	---	---	---------------------------	-------------------------

Procedure NA for arrivals at GFK VOR/DME via airway radials 112 CW 234.



CATEGORY	A	B	C	D
LPV DA	1095-½ 250 (300-½)			
LNAV/VNAV DA	1174-½	329 (400-½)	1174-¾ 329 (400-¾)	
LNAV MDA	1180-½	335 (400-½)	1180-1 335 (400-1)	
CIRCLING	1280-1 435 (500-1)	1300-1 455 (500-1)	1300-1½ 455 (500-1½)	1400-2 555 (600-2)

NC-1, 22 OCT 2009 to 19 NOV 2009

NC-1, 22 OCT 2009 to 19 NOV 2009