

RNAV (GPS) RWY 17R

GRAND FORKS INTL (GFK)

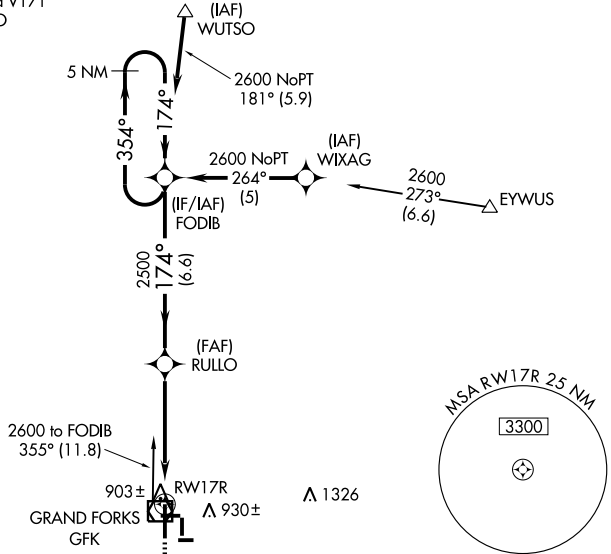
WAAS CH 63199 W17A	APP CRS 174°	Rwy Idg 7349 TDZE 843 Apt Elev 845
--	------------------------	---

▽ DME/DME RNP -0.3 NA.
▲ If local altimeter setting not received use Crookston altimeter setting and increase all DAs /MDAs 80 feet.
 Baro-VNAV NA with Crookston altimeter setting.
 VDP NA with Crookston altimeter setting.
 Baro-VNAV NA below -1.6°C (5°F).

MISSED APPROACH: Climb to 2600 direct ERIXE and hold.

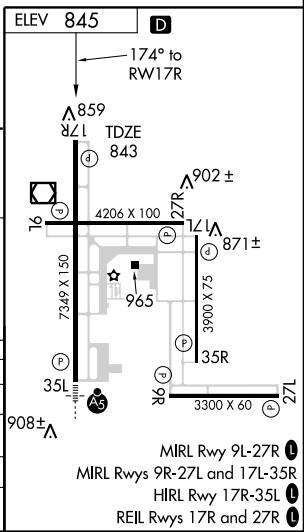
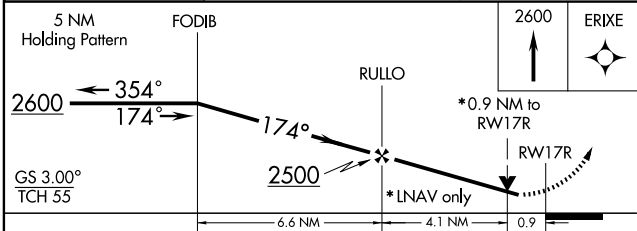
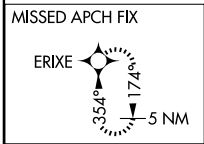
ATIS 119.4	GRAND FORKS APP CON 118.1 318.1	GRAND FORKS TOWER* 118.4 (CTAF) 0 350.35	GND CON 124.575	UNICOM 122.95
----------------------	---	--	---------------------------	-------------------------

Procedure NA for arrivals at EYWUS via V171 northeast bound, and arrivals at WUTSO via V181 northbound.



NC-1, 22 OCT 2009 to 19 NOV 2009

NC-1, 22 OCT 2009 to 19 NOV 2009



CATEGORY	A	B	C	D
LPV DA		1093-3/4	250 (300-3/4)	
LNAV/VNAV DA		1153-1	310 (400-1)	
LNAV MDA		1180-1	337 (400-1)	
CIRCLING	1280-1 435 (500-1)	1300-1 455 (500-1)	1300-1 1/2 455 (500-1 1/2)	1400-2 555 (600-2)