

ILS or LOC RWY 35L

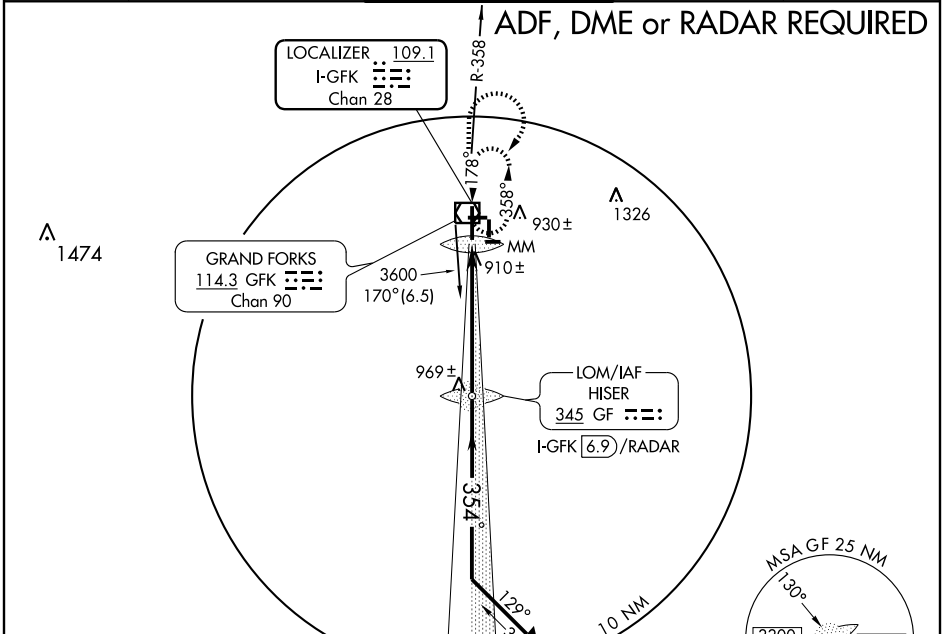
GRAND FORKS INTL (GFK)

LOC/DME I-GFK 109.1 Chan 28	APP CRS 354°	Rwy Idg TDZE Apt Elev	7349 845 845
--	------------------------	-----------------------------	---

⚠ If local altimeter setting not received, use Crockston altimeter setting and increase all DAs/MDAs 80 feet. Procedure turn NA for Cat. E aircraft. VDP NA with Crockston altimeter setting.
For inoperative MALSR, increase S-ILS Cat. E visibility to 1.

MALSR
AS ...
MISSED APPROACH:
Climb to 3600 then right turn direct GFK VOR/DME and hold.

ATIS 119.4	GRAND FORKS APP CON 118.1 318.1	GRAND FORKS TOWER* 118.4 (CTAF) 350.35	GND CON 124.575	UNICOM 122.95
----------------------	---	--	---------------------------	-------------------------



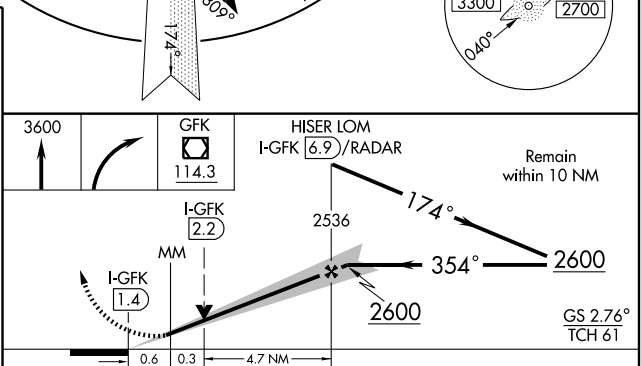
NC-1, 22 OCT 2009 to 19 NOV 2009

NC-1, 22 OCT 2009 to 19 NOV 2009

ELEV 845	MIRL Rwy 9L-27R
D	MIRL Rwy 9R-27L and 17L-35R
	HIRL Rwy 17R-35L
	REIL Rwy 17R and 27R

FAF to MAP 5.6 NM

Knots	60	90	120	150	180
Min:Sec	5:36	3:44	2:48	2:14	1:52



CATEGORY	A	B	C	D	E
S-ILS 35L	1045-½ 200 (200-½)				
S-LOC 35L	1160-½	315 (400-½)	1160-¾	315 (400-¾)	
CIRCLING	1280-1 435 (500-1)	1300-1 455 (500-1)	1300-1¼ 455 (500-1¼)	1400-2 555 (600-2)	1520-2½ 675 (700-2½)