

RNAV (GPS) RWY 35

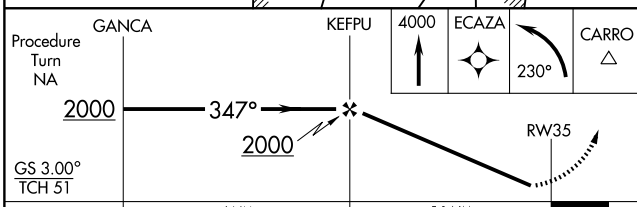
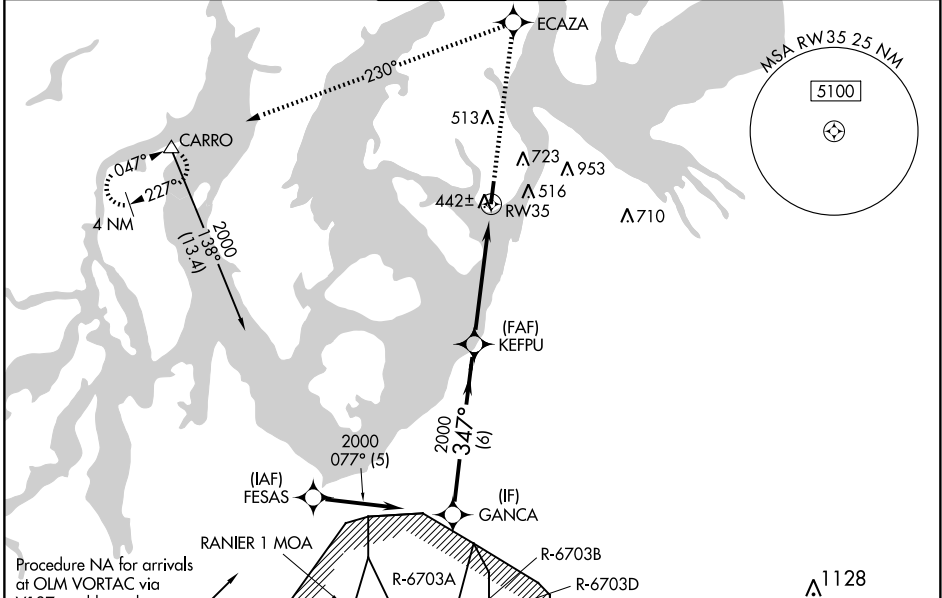
TACOMA NARROWS (TIW)

WAAS CH 50312 W35A	APP CRS 347°	Rwy Idg TDZE 294 Apt Elev 294	5002
--	------------------------	---	-------------

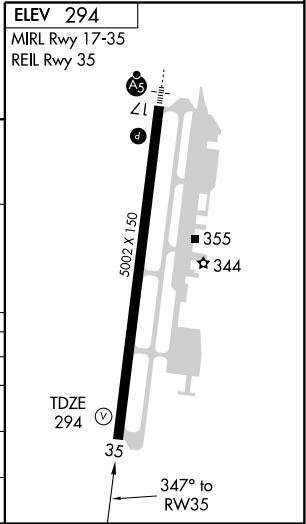
▼ Baro-VNAV NA when using McCord AFB altimeter setting.
▲ For uncompensated Baro-VNAV systems, LNAV/VNAV NA below -15°C (5°F) or above 48°C (118°F). DME/DME RNP-0.3 NA.
 Visibility reduction by helicopters NA. Circling NA east of Rwy 17-35.
 When local altimeter setting not received, use McCord AFB altimeter setting and increase all DA 25 feet and all MDA 40 feet.

MISSED APPROACH: Climb to 4000 direct ECAZA and left turn via 230° track to CARRO and hold, continue climb-in-hold to 4000.

ATIS 124.05	SEATTLE APP CON 120.1 290.9	TACOMA TOWER ★ 118.5 (CTAF) 0 253.5	GND CON 121.8	UNICOM 122.95
-----------------------	---------------------------------------	---	-------------------------	-------------------------



Procedure Turn NA	GANCA	KEFPU	4000	ECAZA	CARRO
GS 3.00° TCH 51	2000	347°	2000	RW35	
	6 NM		5.1 NM		
CATEGORY	A	B	C	D	
LPV DA	560-1 266 (300-1)				
LNAV/VNAV DA	768-1¾ 474 (500-1¾)				
LNAV MDA	840-1 546 (600-1)	840-1½ 546 (600-1½)		840-1¾ 546 (600-1¾)	
CIRCLING	980-1 686 (700-1)	980-2 686 (700-2)		980-2¼ 686 (700-2¼)	



NW-1, 22 OCT 2009 to 19 NOV 2009

NW-1, 22 OCT 2009 to 19 NOV 2009