


# RNAV (GPS) RWY 17

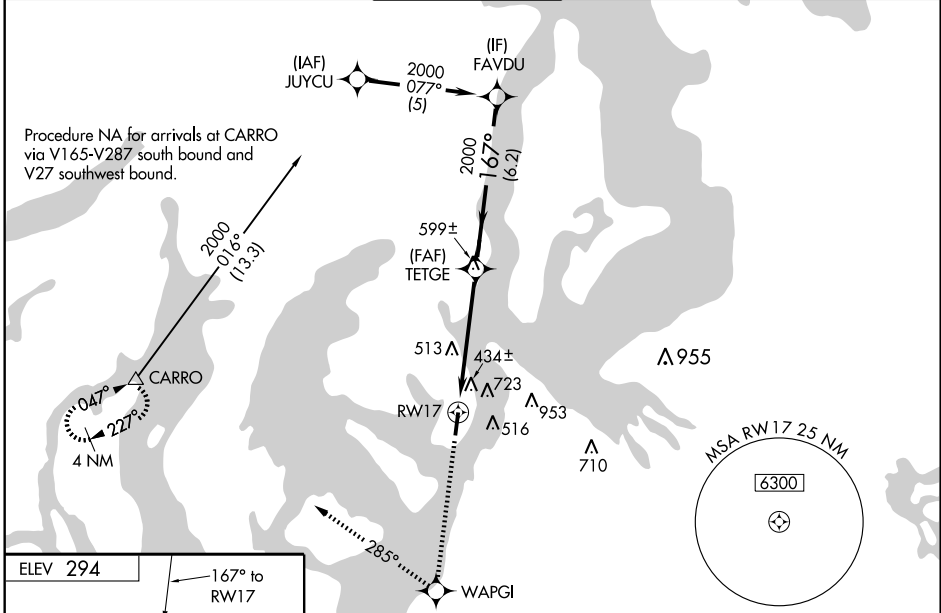
TACOMA NARROWS (TIW)

WAAS CH <b>82608</b> <b>W17A</b>	APP CRS <b>167°</b>	Rwy Idg TDZE <b>294</b> Apt Elev <b>294</b>	<b>5002</b>
--	------------------------	---	-------------

**⚠** Inoperative table does not apply to LNAV Cats A and B.  
**⚠** Circling NA east of Rwy 17/35.  
**⚠** Baro-VNAV NA when using McChord AFB altimeter setting.  
 For uncompensated Baro-VNAV systems, LNAV/VNAV NA below -1.5°C (5°F) or above 48°C (118°F).  
 DME/DME RNP -0.3 NA. Visibility reduction by helicopters NA.  
 When local altimeter setting not received, use McChord AFB altimeter setting and increase all DA/MDA 40 feet.

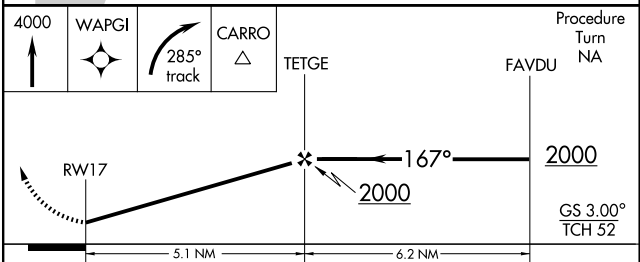
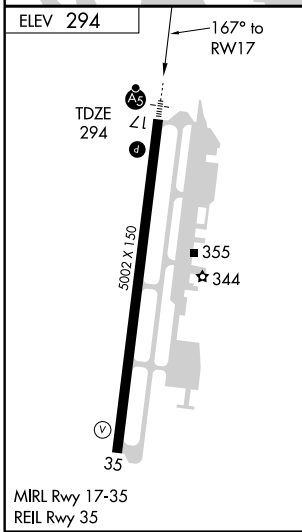
**MALSR**  
  
**MISSED APPROACH:** Climb to 4000 direct WAPGI and right turn via 285° track to CARRO and hold, continue climb-in-hold to 4000.

ATIS <b>124.05</b>	SEATTLE APP CON <b>120.1 290.9</b>	TACOMA TOWER ★ <b>118.5 (CTAF) 0 253.5</b>	GND CON <b>121.8</b>	UNICOM <b>122.95</b>
-----------------------	---------------------------------------	---	-------------------------	-------------------------



NW-1, 22 OCT 2009 to 19 NOV 2009

NW-1, 22 OCT 2009 to 19 NOV 2009



CATEGORY	A	B	C	D
LPV DA		638-1	344 (400-1)	
LNAV/ VNAV DA		992-2	698 (700-2)	
LNAV MDA	980-1	686 (700-1)	980-1½ 686 (700-1½)	980-1¾ 686 (700-1¾)
CIRCLING	980-1	686 (700-1)	980-2 686 (700-2)	980-2¼ 686 (700-2¼)