

VOR/DME-A

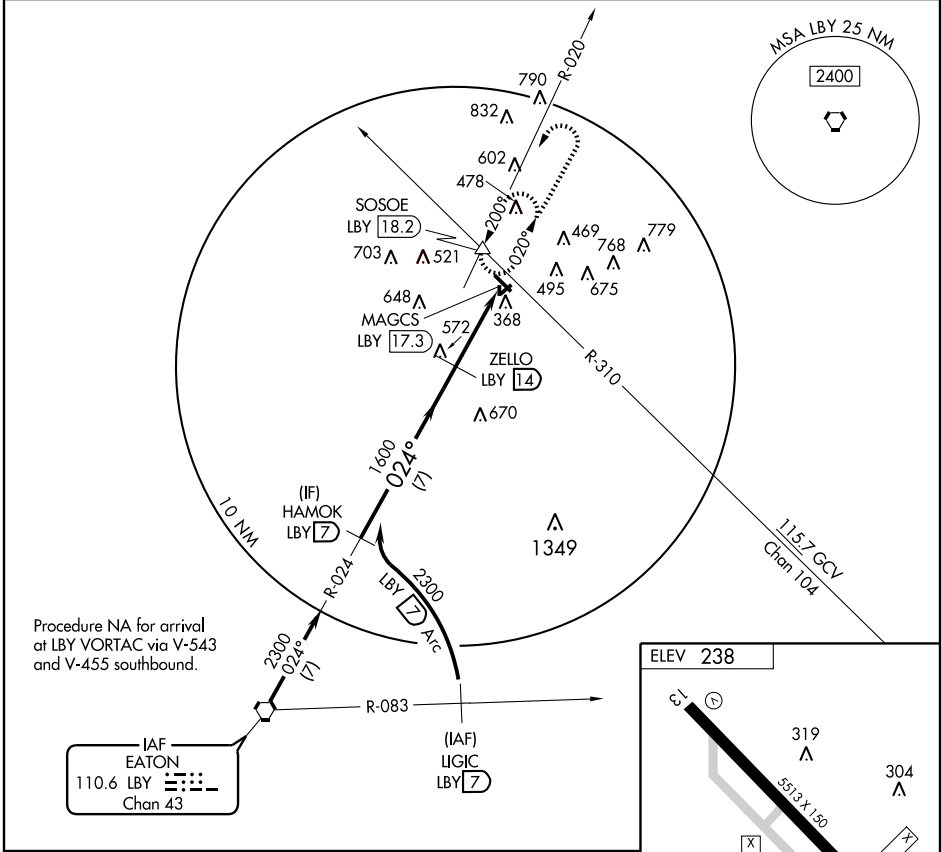
LAUREL/HESLER-NOBLE FIELD (LUL)

VORTAC LBY <b>110.6</b> Chan <b>43</b>	APP CRS <b>024°</b>	Rwy Idg TDZE Apt Elev	N/A N/A <b>238</b>
--	------------------------	-----------------------------	--------------------------

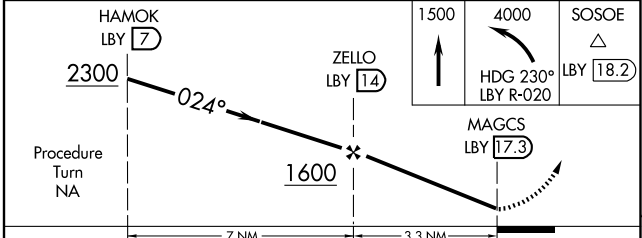
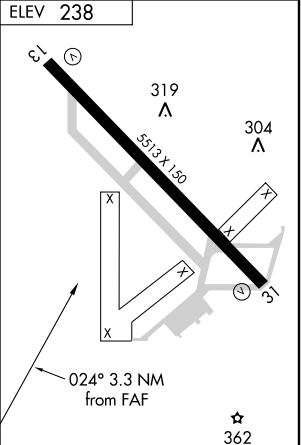
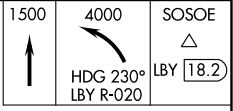
When local altimeter setting not received, use Hattiesburg-Laurel Rgnl altimeter setting and increase all MDA 60 feet and Cat C visibility to 1 3/4 mile.

MISSED APPROACH: Climb to 1500 then climbing left turn to 4000 via heading 230° and LBY R-020 to SOSOE Int/LBY 18.2 DME and hold.

AWOS-3 <b>119.275</b>	HOUSTON CENTER <b>126.8 327.8</b>	UNICOM <b>123.05 (CTAF)</b>
--------------------------	--------------------------------------	--------------------------------



Procedure NA for arrival at LBY VORTAC via V-543 and V-455 southbound.



CATEGORY	A	B	C	D
CIRCLING	820-1 582 (600-1)		820-1 1/2 582 (600-1 1/2)	820-2 582 (600-2)

REIL Rwy 13-3  
HIRL Rwy 13-3

SC-4, 22 OCT 2009 to 19 NOV 2009

SC-4, 22 OCT 2009 to 19 NOV 2009