

GRAND RAPIDS, MICHIGAN

AL-5184 (FAA)

VOR RWY 35

GRAND RAPIDS / GERALD R. FORD INTL (G.R.R.)

VOR/DME GRR 115.95 Chan 106 (Y)	APP CRS 355°	Rwy Idg 8501 TDZE 790 Apt Elev 794
---	------------------------	---

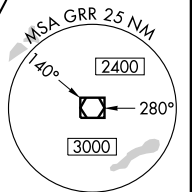
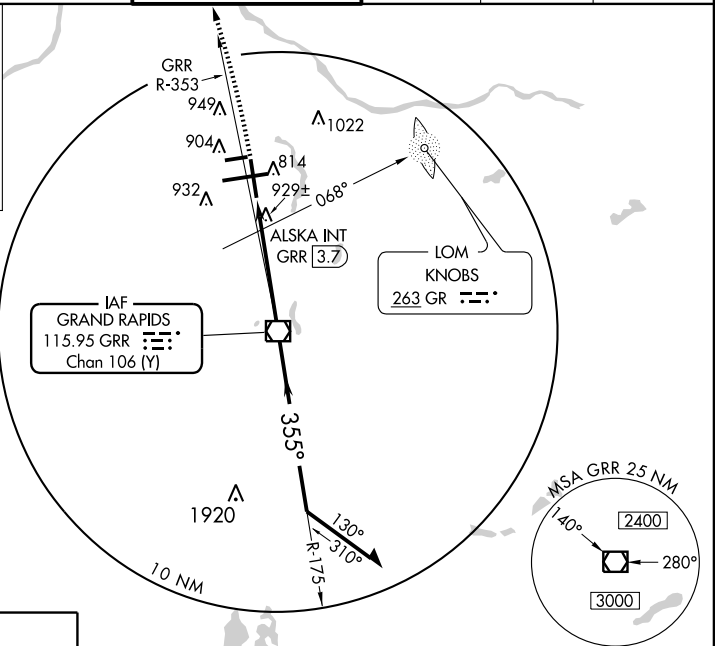
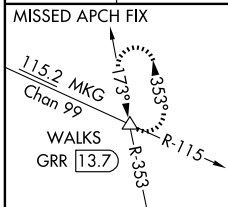
ASR When local altimeter setting not received, use Holland altimeter setting and increase all MDA 80 feet, S-35 Cat C visibility to RVR 5000, Cat D to RVR 6000, ALSKA INT minimums S-35 Cat C to RVR 4000.
For inoperative MALSR, increase ALSKA INT minimums S-35 Cat D visibility to RVR 6000.

MALSR

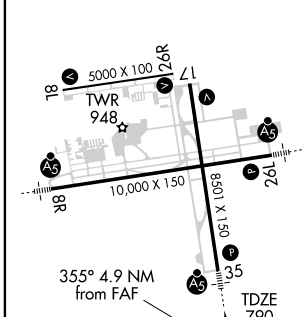


MISSED APPROACH: Climb to 3000 via GRR VOR/DME R-353 to WALKS INT/GRR 13.7 DME and hold.

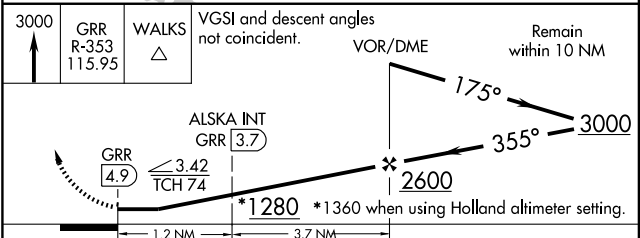
ATIS 127.1	GRAND RAPIDS APP CON * 128.4 257.6	GRAND RAPIDS TOWER * 135.65 (CTAF) 0 339.8	GND CON 121.8	CLNC DEL 119.3	UNICOM 122.95
----------------------	--	--	-------------------------	--------------------------	-------------------------



ELEV 794



MIRL Rwy 8L-26R	REIL Rwys 8L, 26R and 17	HIRL Rwys 8R-26L and 17-35			
FAF to MAP 4.9 NM					
Knots	60	90	120	150	180
Min:Sec	4:54	3:16	2:27	1:58	1:38



CATEGORY	A	B	C	D
S-35	1280/24	490 (500-½)	1280/40 490 (500-¾)	1280/50 490 (500-1)
CIRCLING	1280-1	486 (500-1)	1280-1½ 486 (500-1½)	1360-2 566 (600-2)
ALSKA INT MINIMUMS				
S-35	1180/24 390 (400-½)			1180/50 390 (400-1)
CIRCLING	1280-1	486 (500-1)	1280-1½ 486 (500-1½)	1360-2 566 (600-2)

GRAND RAPIDS, MICHIGAN
Amdt 1 09183

GRAND RAPIDS / GERALD R. FORD INTL (G.R.R.)

42°53'N - 85°31'W

VOR RWY 35

EC-1, 22 OCT 2009 to 19 NOV 2009

EC-1, 22 OCT 2009 to 19 NOV 2009