

RNAV (GPS) RWY 8R

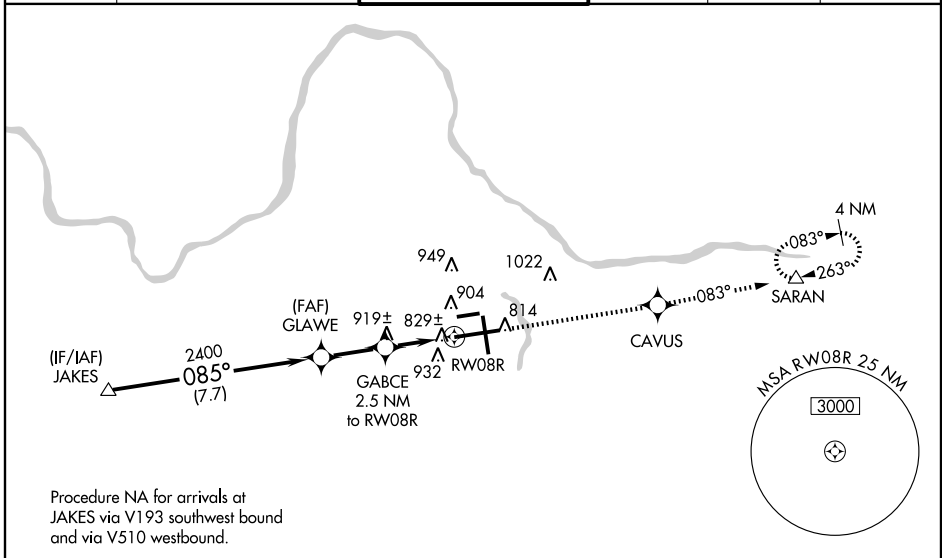
GRAND RAPIDS / GERALD R. FORD INTL (G.R.R.)

WAAS CH 40113 W08B	APP CRS 085°	Rwy Idg 10000 TDZE 794 Apt Elev 794
--	------------------------	--

⚠ For uncompensated Baro-VNAV systems, LNAV/VNAV NA below -16°C (4°F) or above 47°C (116°F). DME/DME RNP-0.3 NA. VDP and Baro-VNAV NA when using Holland altimeter setting. When local altimeter setting not received, use Holland altimeter setting and increase all DA 76 feet and all MDA 80 feet, LNAV/VNAV all Cats visibility to RVR 6000, LNAV Cat C to RVR 4000. For inoperative MALSR, increase LNAV Cat D visibility to RVR 6000. For inoperative MALSR when using Holland altimeter setting, increase LPV all Cats visibility to RVR 5000.

MALSR 	MISSED APPROACH: Climb to 2700 direct CAVUS and via track 083° to SARAN and hold.
-----------	---

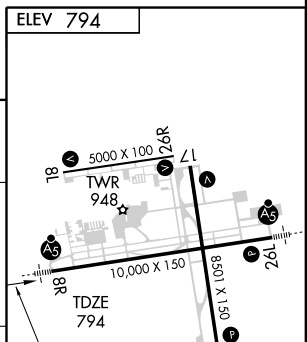
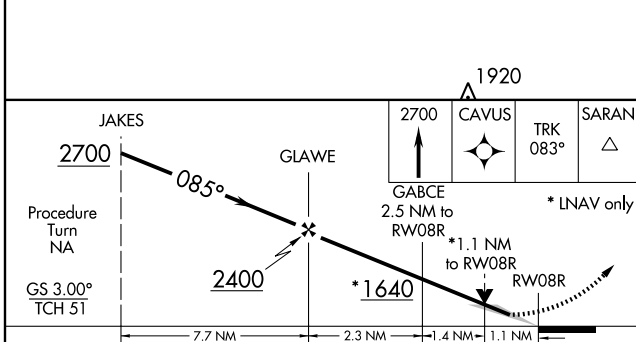
ATIS 127.1	GRAND RAPIDS APP CON * 128.4 257.6	GRAND RAPIDS TOWER * 135.65 (CTAF) 339.8	GND CON 121.8	CLNC DEL 119.3	UNICOM 122.95
----------------------	--	--	-------------------------	--------------------------	-------------------------



Procedure NA for arrivals at JAKES via V193 southwest bound and via V510 westbound.

EC-1, 22 OCT 2009 to 19 NOV 2009

EC-1, 22 OCT 2009 to 19 NOV 2009



CATEGORY	A	B	C	D
LPV DA	994/24 200 (200-1/2)			
LNAV/VNAV DA	1213/50 419 (500-1)			
LNAV MDA	1180/24 386 (400-1/2)		1180/50 386 (400-1)	
CIRCLING	1260-1 466 (500-1)	1260-1 1/2 466 (500-1/2)	1360-2 566 (600-2)	

ELEV 794
MIRL Rwy 8L-26R
REIL Rws 8L, 26R and 17
HIRL Rws 8R-26L and 17-35

RNAV (GPS) RWY 8R