

# RNAV (GPS) RWY 8L

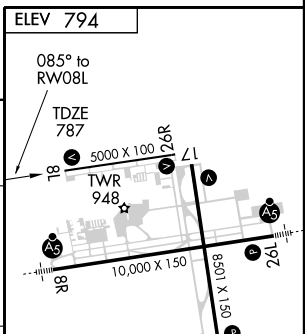
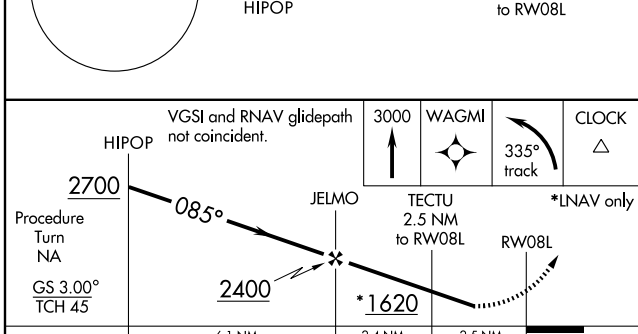
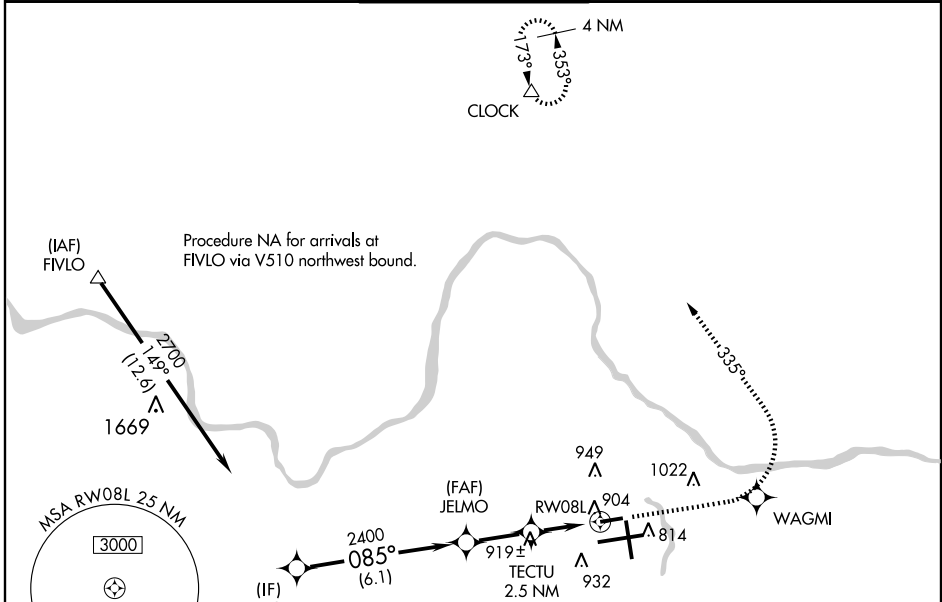
GRAND RAPIDS / GERALD R. FORD INTL (G.R.)

WAAS CH <b>40213</b> <b>W08A</b>	APP CRS <b>085°</b>	Rwy Idg TDZE Apt Elev	<b>5000</b> <b>787</b> <b>794</b>
--	------------------------	-----------------------------	---

**⚠** Baro-VNAV NA when using Holland altimeter setting. For uncompensated Baro-VNAV systems, LNAV/VNAV NA below -16°C (4°F) or above 47°C (116°F). DME/DME RNP-0.3 NA.  
**⚠** Visibility reduction by helicopters NA. When local altimeter setting not received, use Holland altimeter setting and increase all DA 76 feet and all MDA 80 feet. Increase LPV and LNAV/VNAV visibility ¼ mile all Cats. Increase LNAV Cat C/D visibility ¼ mile.

**MISSED APPROACH:** Climb to 3000 direct WAGMI and left turn via track 335° to CLOCK and hold.

ATIS <b>127.1</b>	GRAND RAPIDS APP CON * <b>128.4 257.6</b>	GRAND RAPIDS TOWER * <b>135.65 (CTAF) 0 339.8</b>	GND CON <b>121.8</b>	CLNC DEL <b>119.3</b>	UNICOM <b>122.95</b>
----------------------	--	--	-------------------------	--------------------------	-------------------------



CATEGORY	A	B	C	D
LPV DA	1037-1 250 (300-1)			
LNAV/VNAV DA	1204-1½ 417 (500-1½)			
LNAV MDA	1180-1 393 (400-1)		1180-1¼ 393 (400-1¼)	
CIRCLING	1260-1 466 (500-1)		1260-1½ 466 (500-1½)	
			1360-2 566 (600-2)	

MIRL Rwy 8L-26R **1**  
 REIL Rws 8L, 26R and 17 **1**  
 HIRL Rws 8R-26L and 17-35 **1**

EC-1, 22 OCT 2009 to 19 NOV 2009

EC-1, 22 OCT 2009 to 19 NOV 2009

# RNAV (GPS) RWY 8L