

RNAV (GPS) RWY 26R

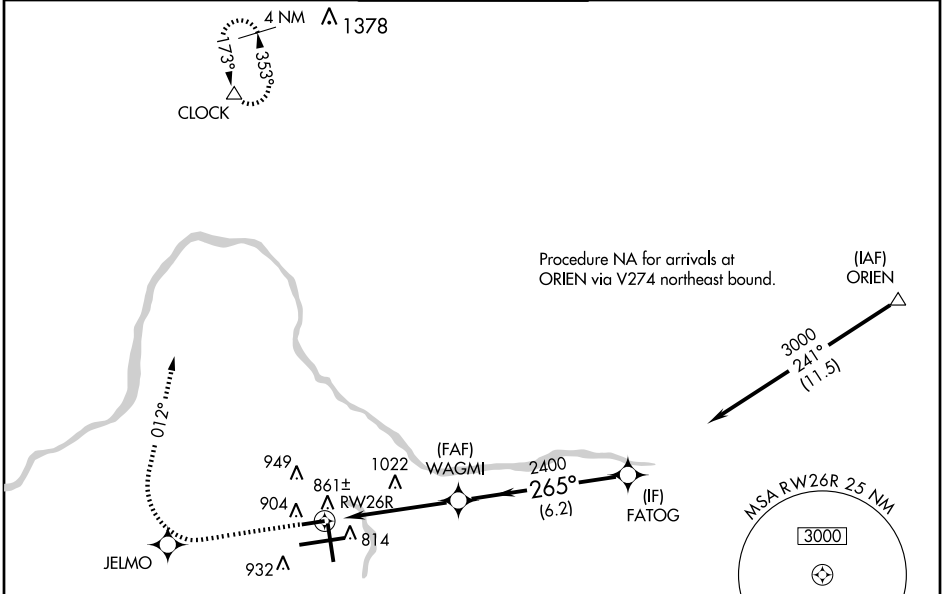
GRAND RAPIDS / GERALD R. FORD INTL (G.R.R.)

WAAS CH 82413 W26A	APP CRS 265°	Rwy Idg 5000 TDZE 787 Apt Elev 794
--	------------------------	---

⚠ Baro-VNAV NA when using Holland altimeter setting. For uncompensated Baro-VNAV systems, LNAV/VNAV NA below -16°C (4°F) or above 47°C (116°F). DME/DME RNP-0.3 NA.
ASR Visibility reduction by helicopters NA. When local altimeter setting not received, use Holland altimeter setting and increase all DA 76 feet and all MDA 80 feet. Increase LPV and LNAV/VNAV visibility ¼ mile all Cats. Increase LNAV Cat C/D ¼ mile.

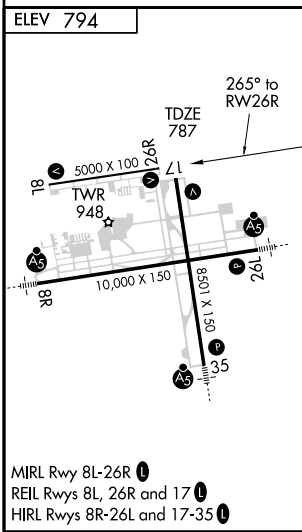
MISSED APPROACH: Climb to 3000 direct JELMO and right turn via track 012° to CLOCK and hold.

ATIS 127.1	GRAND RAPIDS APP CON * 128.4 257.6	GRAND RAPIDS TOWER * 135.65 (CTAF) 339.8	GND CON 121.8	CLNC DEL 119.3	UNICOM 122.95
----------------------	--	--	-------------------------	--------------------------	-------------------------



EC-1, 22 OCT 2009 to 19 NOV 2009

EC-1, 22 OCT 2009 to 19 NOV 2009



ELEV 794	3000	JELMO	CLOCK	VGSI and RNAV glidepath not coincident.	FATOG	Procedure Turn NA
	↑	✧	012° track		3000	
					WAGMI	GS 3.00° TCH 50
					265°	
					2400	
					4.9 NM	6.2 NM
CATEGORY	A	B	C	D		
LPV DA	1037-1				250 (300-1)	
LNAV/VNAV DA	1216-1½				429 (500-1½)	
LNAV MDA	1280-1	493 (500-1)	1280-1¼	493 (500-1¼)	1280-1½	493 (500-1½)
CIRCLING	1280-1	486 (500-1)	1280-1½	486 (500-1½)	1360-2	566 (600-2)