

RNAV (GPS) RWY 26L

GRAND RAPIDS / GERALD R. FORD INTL (G.R.R.)

WAAS CH 86713 W26B	APP CRS 265°	Rwy Idg 10000 TDZE 790 Apt Elev 794
--	------------------------	--

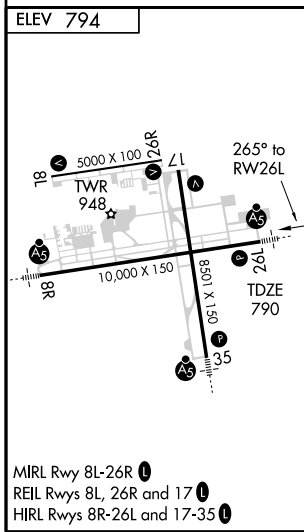
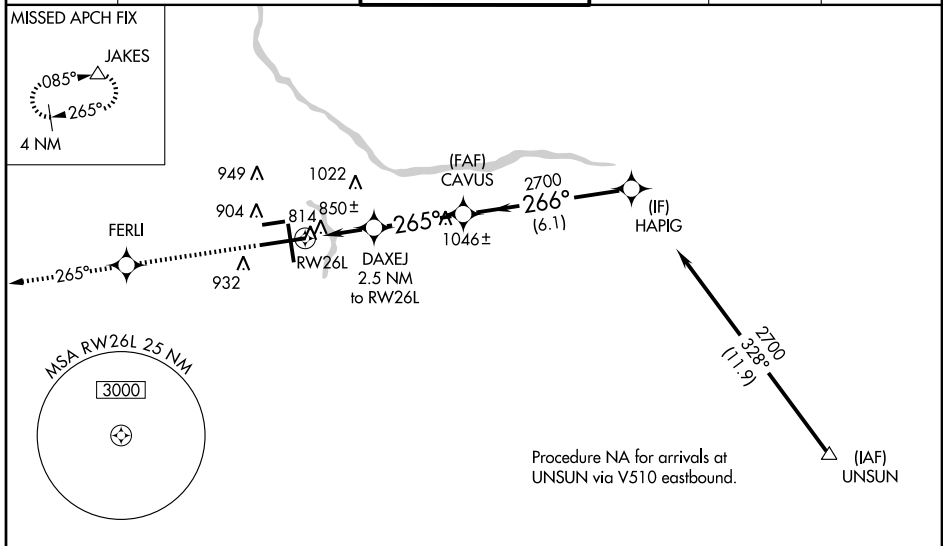
ASR For uncompensated Baro-VNAV systems, LNAV/VNAV NA below -16°C (4°F) or above 47°C (116°F). DME/DME RNP-0.3 NA. VDP and Baro-VNAV NA when using Holland altimeter setting. When local altimeter setting not received, use Holland altimeter setting and increase all DA 76 feet and all MDA 80 feet, LNAV/VNAV Cats A/B/C visibility to RVR 4000, LNAV Cat C to RVR 5000, Cat D to RVR 6000. For inoperative MALSRS, increase LNAV/VNAV Cat D visibility to RVR 5000. For inoperative MALSRS when using Holland altimeter setting, increase LPV all Cats visibility to RVR 5000.

MALSRS



MISSED APPROACH: Climb to 2700 direct FERLI and via 265° track to JAKES and hold.

ATIS 127.1	GRAND RAPIDS APP CON * 128.4 257.6	GRAND RAPIDS TOWER * 135.65 (CTAF) 0 339.8	GND CON 121.8	CLNC DEL 119.3	UNICOM 122.95
----------------------	--	--	-------------------------	--------------------------	-------------------------



2700	FERLI	TRK 265°	JAKES	VGSI and RNAV glidepath not coincident.	Procedure Turn NA
			DAXEJ 2.5 NM to RW26L	CAVUS	HAPIG
*LNAV only			*1.3 NM to RW26L	265°	266°
				*1640	2700
					GS 3.00° TCH 55
CATEGORY	A	B	C	D	
LPV DA	990/24 200 (200-½)				
LNAV/VNAV DA	1114/24 324 (400-½)			1114/40 324 (400-¾)	
LNAV MDA	1280/24	490 (500-½)	1280/40 490 (500-¾)	1280/50 490 (500-1)	
CIRCLING	1280-1	486 (500-1)	1280-1½ 486 (500-1½)	1360-2 566 (600-2)	

RNAV (GPS) RWY 26L

EC-1, 22 OCT 2009 to 19 NOV 2009

EC-1, 22 OCT 2009 to 19 NOV 2009