

RNAV (GPS) RWY 17

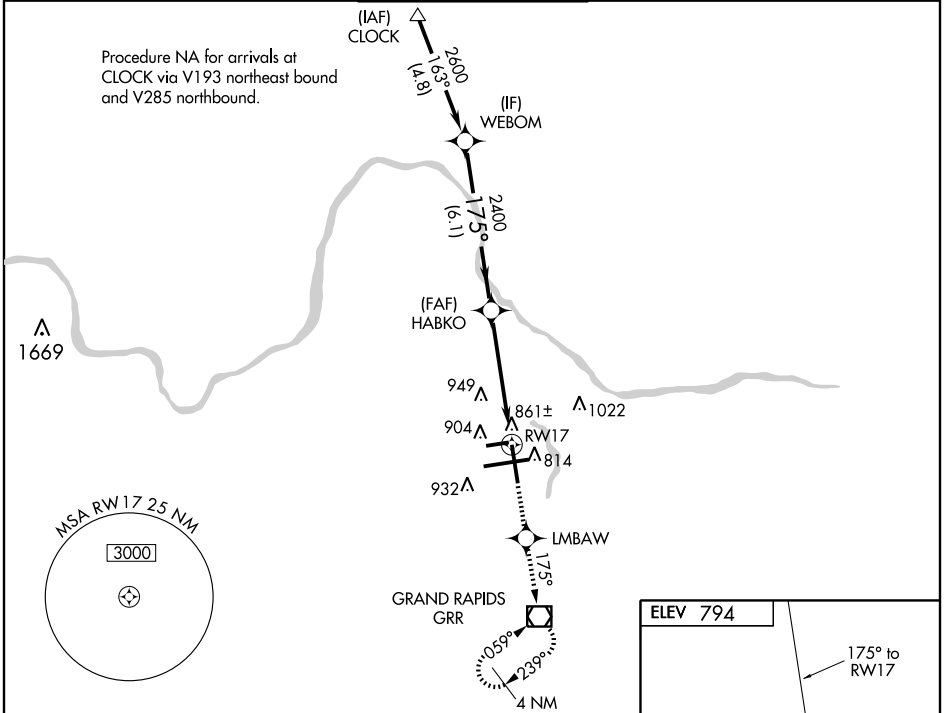
GRAND RAPIDS / GERALD R. FORD INTL (GRR)

WAAS CH 93912 W17A	APP CRS 175°	Rwy Idg 8501 TDZE 789 Apt Elev 794
--	------------------------	---

⚠ For uncompensated Baro-VNAV systems, LNAV/VNAV NA below -16°C (4°F) or above 47°C (116°F). DME/DME RNP-0.3 NA. Visibility reduction by Helicopters NA. When local altimeter setting not received, use Holland altimeter setting and increase all DA 76 feet and all MDA 80 feet. Increase LPV visibility ½ mile all Cats and LNAV/VNAV visibility ¼ mile all Cats. Increase LNAV Cat D visibility ¼ mile. Baro-VNAV and VDP NA when using Holland altimeter setting.

MISSED APPROACH: Climb to 3000 direct LMBAW and via track 175° to GRR VOR/DME and hold, continue climb-in-hold to 3000.

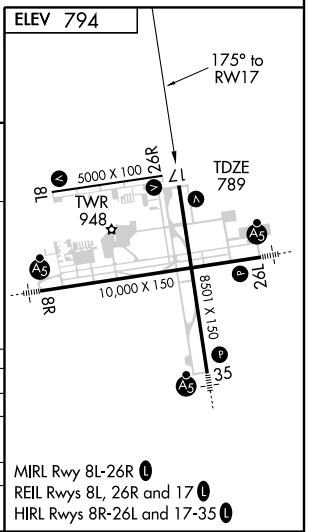
ATIS 127.1	GRAND RAPIDS APP CON* 128.4 257.6	GRAND RAPIDS TOWER* 135.65 (CTAF) 339.8	GND CON 121.8	CLNC DEL 119.3	UNICOM 122.95
----------------------	---	---	-------------------------	--------------------------	-------------------------



EC-1, 22 OCT 2009 to 19 NOV 2009

EC-1, 22 OCT 2009 to 19 NOV 2009

WEBOM	VGSi and RNAV glidepath not coincident.		3000	LMBAW	175° track	GRR
2600	175°		HABKO	*1.2 NM to RWY17	RWY17	
Procedure Turn NA	2400			*LNAV only		
GS 3.00° TCH 50	6.1 NM		3.7 NM	1.2		
CATEGORY	A	B	C	D		
LPV DA	1108-1		319 (400-1)			
LNAV/VNAV DA	1259-1¾		470 (500-1¾)			
LNAV MDA	1200-1 411 (500-1)		1200-1½ 411 (500-1½)			
CIRCLING	1260-1 466 (500-1)		1260-1½ 566 (600-2)			



MIRL Rwy 8L-26R
REIL Rwy 8L, 26R and 17
HIRL Rwy 8R-26L and 17-35