

ILS or LOC RWY 35

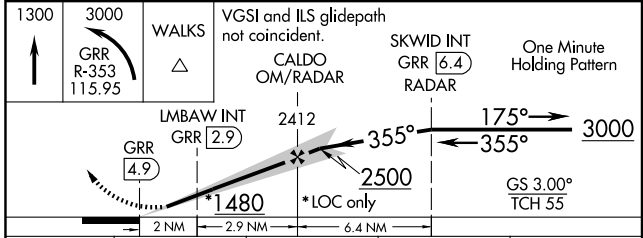
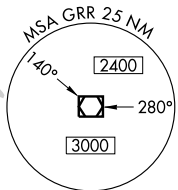
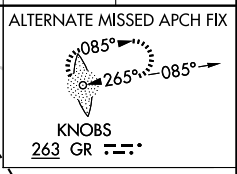
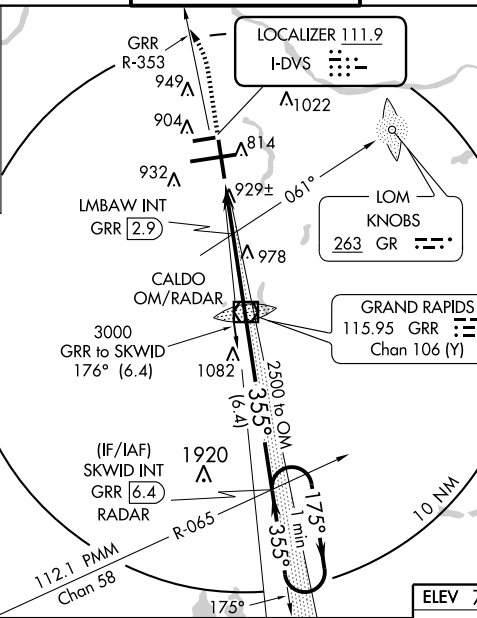
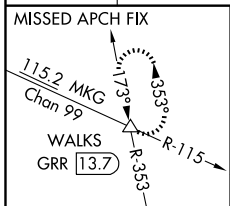
GRAND RAPIDS / GERALD R. FORD INTL (G.R.R.)

LOC I-DVS 111.9	APP CRS 355°	Rwy Idg TDZE Apt Elev 8501 790 794
---------------------------	------------------------	--

ASR When local altimeter setting not received, use Holland altimeter setting and increase all DA 76 feet and all MDA 80 feet. Increase S-LOC 35 Cat B visibility to RVR 4000 and Cat C/D visibility ¼ mile. Increase Cat B/C/D Circling visibility ¼ mile. LMBAW INT MINIMUMS: Increase S-LOC 35 Cat C visibility to RVR 4000 and Cat D to RVR 5000. For inoperative MALSR when using Holland altimeter setting, increase S-ILS 35 all Cats visibility to RVR 5000. ****RVR 1800 authorized with the use of FD or AP or HUD to DA.**

MALSR MISSED APPROACH: Climb to 1300 then climbing left turn to 3000 via GRR VOR/DME R-353 to WALKS INT/GRR 13.7 DME and hold.

ATIS 127.1	GRAND RAPIDS APP CON * 128.4 257.6	GRAND RAPIDS TOWER * 135.65 (CTAF) 339.8	GND CON 121.8	CLNC DEL 119.3	UNICOM 122.95
----------------------	--	--	-------------------------	--------------------------	-------------------------



ELEV 794

MIRL Rwy 8L-26L
REIL Rwy 8L, 26R and 17L
HIRL Rwy 8R-26L and 17-35L

FAF to MAP 4.9 NM

Knots	60	90	120	150	180
Min:Sec	4:54	3:16	2:27	1:58	1:38

CATEGORY	A	B	C	D
S-ILS 35	** 990/24		200 (200-½)	
S-LOC 35	1480/24	690 (700-½)	1480-1½ 690 (700-1½)	1480-1¾ 690 (700-1¾)
CIRCLING	1480-1	686 (700-1)	1480-2 686 (700-2)	1480-2¼ 686 (700-2¼)
LMBAW FIX MINIMUMS				
S-LOC 35	1180/24		390 (400-½)	
CIRCLING	1260-1	466 (500-1)	1260-1½ 466 (500-1½)	1360-2 566 (600-2)

ILS or LOC RWY 35

EC-1, 22 OCT 2009 to 19 NOV 2009

EC-1, 22 OCT 2009 to 19 NOV 2009