

# RNAV (GPS) RWY 5

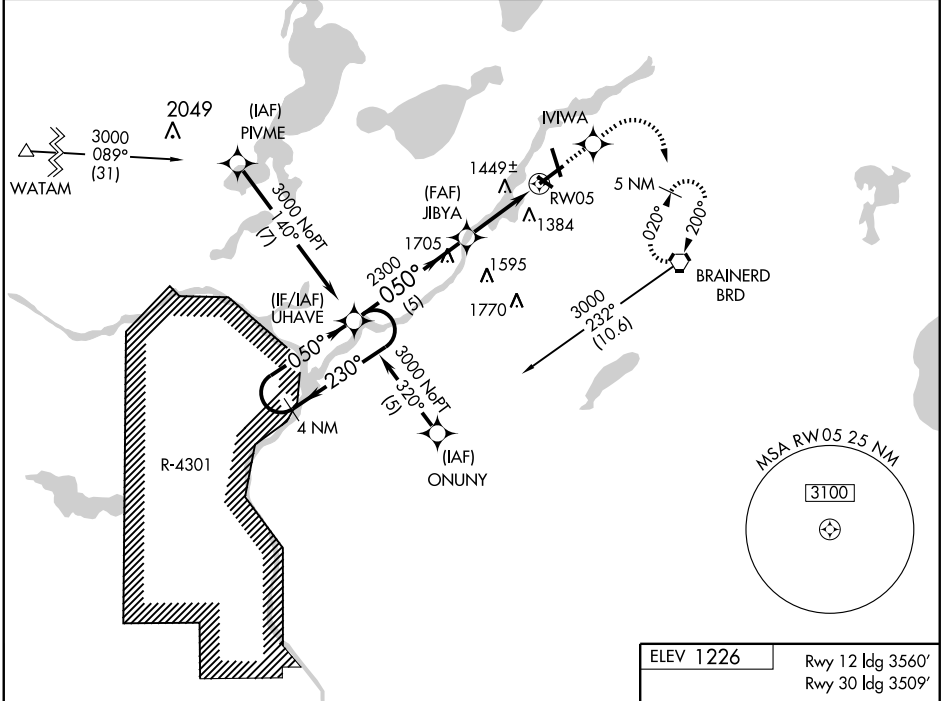
BRainerd LAKES RGNL (BRD)

APP CRS <b>050°</b>	Rwy Idg TDZE Apt Elev	<b>6514</b> <b>1223</b> <b>1226</b>
------------------------	-----------------------------	-------------------------------------------

**NA** Baro-VNAV NA below -17°C (2°F).  
GPS or RNP-0.3 required. DME/DME RNP-0.3 NA.  
Holding in lieu of procedure turn NA when R-4301 is active.

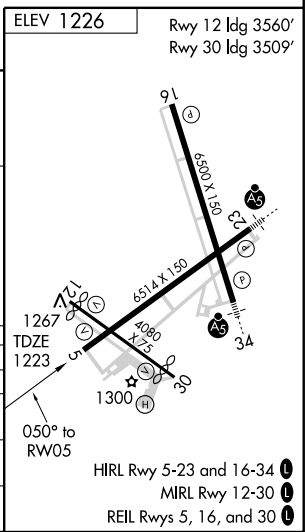
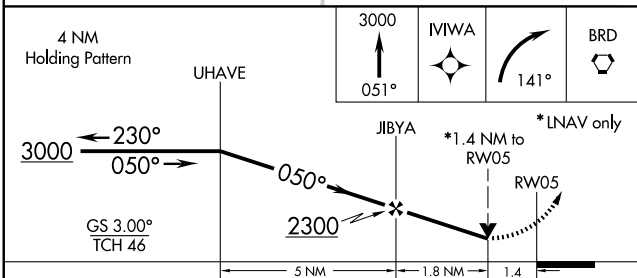
MISSED APPROACH: Climb to 3000 via 051° course to MWVA WP then right turn via 141° course to BRD VORTAC and hold.

ASOS <b>126.775</b>	MINNEAPOLIS CENTER <b>118.05 239.0</b>	UNICOM <b>122.7(CTAF)</b>
------------------------	-------------------------------------------	------------------------------



NC-1, 22 OCT 2009 to 19 NOV 2009

NC-1, 22 OCT 2009 to 19 NOV 2009



4 NM Holding Pattern	3000	MWVA	BRD	
UHAVE	051°	141°		
3000 ← 230°	050° →			
GS 3.00° TCH 46	2300			
	5 NM	1.8 NM	1.4	
CATEGORY	A	B	C	D
GLS PA DA	NA			
LNAV/VNAV DA	1700-1¾ 477 (500-1¾)			
LNAV MDA	1700-1	477 (500-1)	1700-1½ 477 (500-1½)	1780-2
CIRCLING	1760-1¾	534 (600-1¾)	554 (600-2)	

HIRL Rwy 5-23 and 16-34  
MIRL Rwy 12-30  
REIL Rwy 5, 16, and 30