

# RNAV (GPS) RWY 12

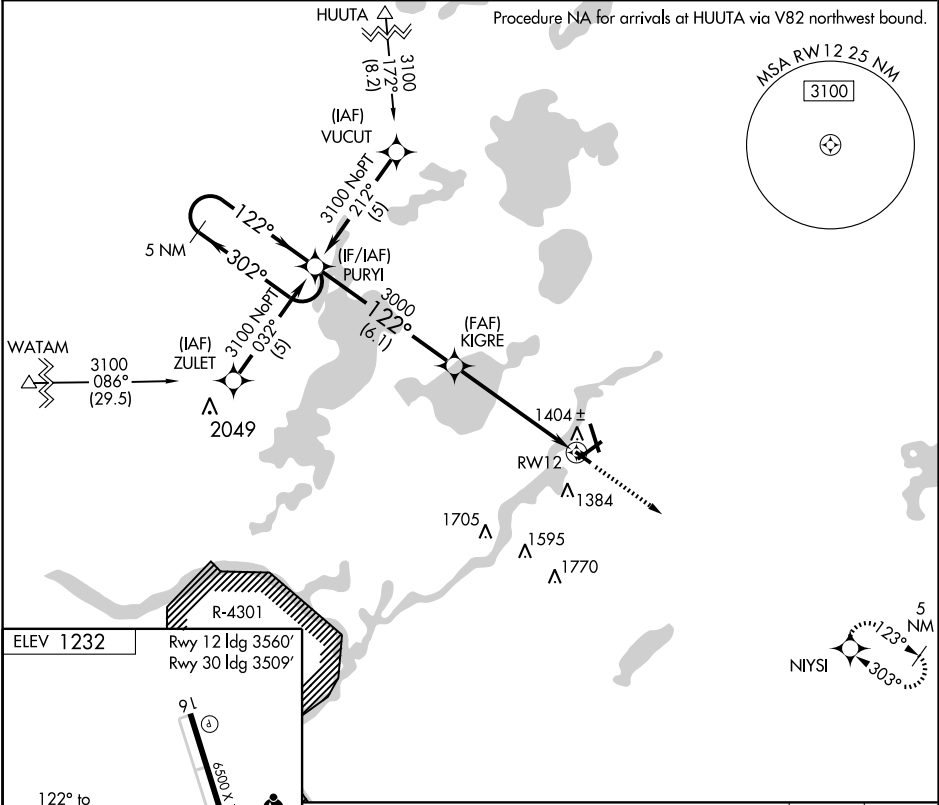
BRAINERD LAKES RGNL (B.R.D)

APP CRS	Rwy Idg	<b>3560</b>
<b>122°</b>	TDZE	<b>1225</b>
	Apt Elev	<b>1232</b>

**▼** If local altimeter setting not received, use Aitkin Muni-Steve Kurtz Field altimeter setting and increase all MDAs 60 feet.  
**▲** DME/DME RNP-0.3 NA.  
 Visibility reduction by helicopters NA.

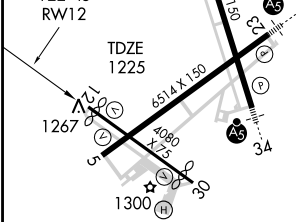
MISSED APPROACH: Climb to 3300 direct NIYSI and hold.

ASOS <b>126.775</b>	MINNEAPOLIS CENTER <b>118.05 239.0</b>	UNICOM <b>122.7 (CTAF) 0</b>
------------------------	---	---------------------------------



NC-1, 22 OCT 2009 to 19 NOV 2009

NC-1, 22 OCT 2009 to 19 NOV 2009



5 NM Holding Pattern	PURYI		KIGRE	3300	NIYSI
	3100 ← 302°	→ 122°	122°	3000	
VGS1 and descent angles not coincident.					
		6.1 NM		5.4 NM	
3.04° ≥ TCH 40					
CATEGORY	A	B	C	D	
LNAV MDA	1660-1	435 (500-1)	1660-1¼ 435 (500-1¼)	1660-1½ 435 (500-1½)	
CIRCLING	1760-1	528 (600-1)	1760-1½ 528 (600-1½)	1800-2 568 (600-2)	

HIRL Rwy 5-23 and 16-34 **Ⓛ**  
 MIRL Rwy 12-30 **Ⓛ**  
 REIL Rwy 5, 16, and 30 **Ⓛ**