

APP CRS	Rwy Idg	4011
095°	TDZE	663
	Apt Elev	663

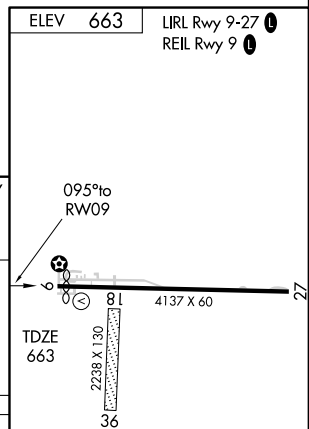
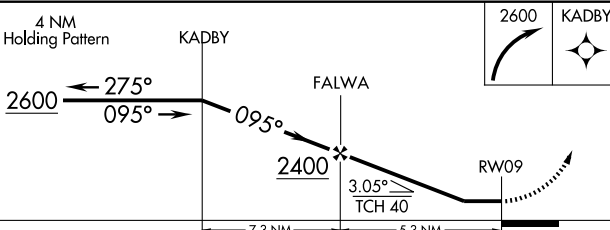
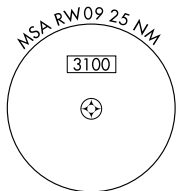
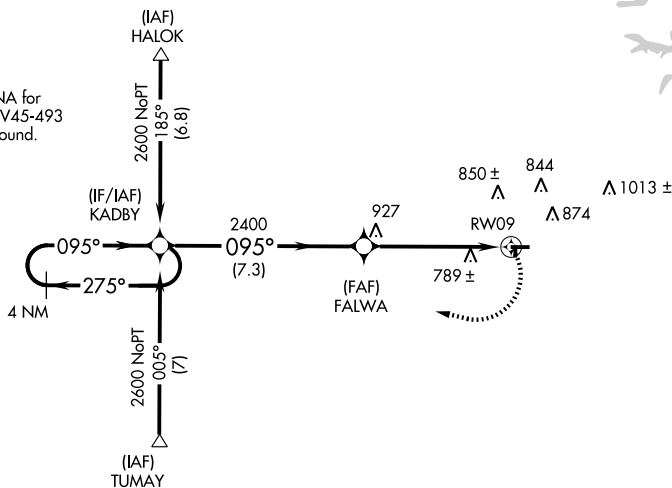
RNAV (GPS) RWY 9

FREMONT (14G)

<p>▼ DME/DME RNP-0.3 NA. Visibility reduction by helicopters NA. Use Sandusky County Rgnl altimeter setting; when not received use Metcalf Field altimeter setting and increase all MDA 40 feet and LNAV Cat D visibility ¼ mile.</p> <p>▲ NA</p>	<p>MISSED APPROACH: Climbing right turn to 2600 direct KADBY and hold.</p>
---	---

<p>TOLEDO APP CON</p> <p>126.1 307.0</p>	<p>UNICOM</p> <p>122.8 (CTAF) 0</p>
---	--

Procedure NA for arrivals via V45-493 Southeast bound.



CATEGORY	A	B	C	D
LNAV MDA	1080-1	417 (500-1)	1080-1¼	417 (500-1¼)
CIRCLING	1200-1	537 (600-1)	1200-1½	1220-2
			537 (600-1½)	557 (600-2)

EC-2, 22 OCT 2009 to 19 NOV 2009

EC-2, 22 OCT 2009 to 19 NOV 2009