


RNAV (GPS) RWY 29

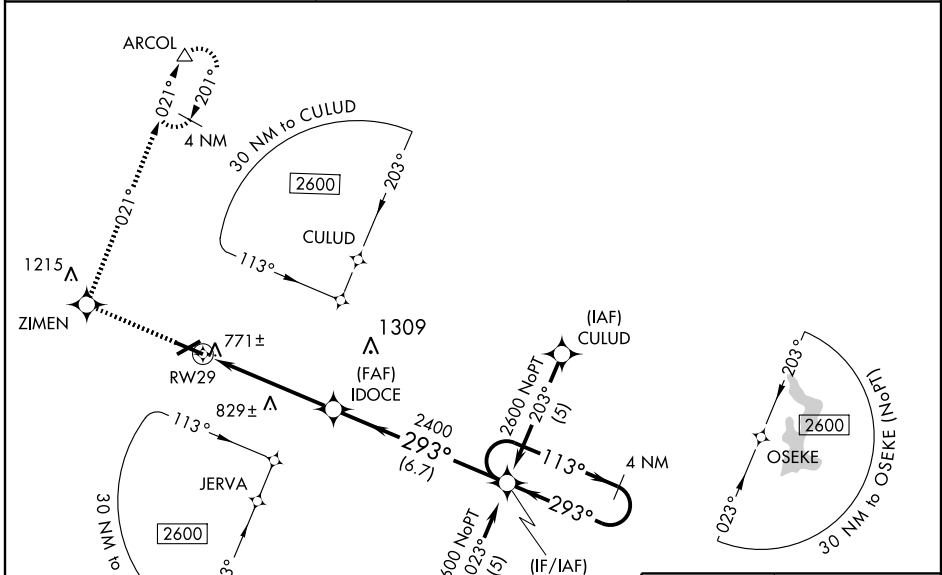
MATTOON-CHARLESTON/ COLES COUNTY MEMORIAL (MTO)

WAAS CH 93510 W29A	APP CRS 293°	Rwy Idg TDZE Apt Elev	6501 718 722
--	------------------------	-----------------------------	---

⚠ For uncompensated Baro-VNAV systems, LNAV/VNAV NA below -16°C (4°F) or above 47°C (116°F). DME/DME RNP-0.3 NA. Baro-VNAV and VDP NA when using Champaign/Urbana altimeter setting. For inoperative MALSR, increase LNAV/VNAV, and LNAV visibility Cat. D ¼ mile. When local altimeter setting not received, use Champaign/Urbana altimeter setting and increase all DA 82 feet, increase all MDA 100 feet, increase LPV, LNAV/VNAV, and LNAV visibility 1 mile. Inoperative table does not apply when using Champaign/Urbana altimeter setting.

MALSR

MISSED APPROACH:
Climb to 2600 direct ZIMEN and via 021° track to ARCOL and hold.

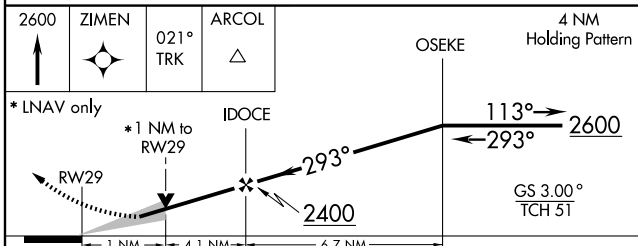
ASOS 109.4	CHAMPAIGN APP CON ★ 132.85 291.0	UNICOM 122.7 (CTAF) 0
----------------------	--	---------------------------------



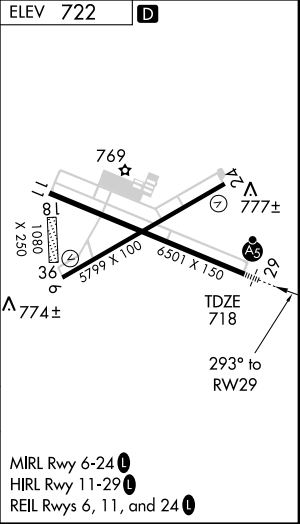
EC-3, 22 OCT 2009 to 19 NOV 2009

EC-3, 22 OCT 2009 to 19 NOV 2009

ELEV 722	D
----------	----------



CATEGORY	A	B	C	D
LPV DA		971-½	253 (300-½)	
LNAV/VNAV DA		1040-½	322 (400-½)	1040-¾ 322 (400-¾)
LNAV MDA		1080-½	362 (400-½)	1080-1 362 (400-1)
CIRCLING	1160-1 438 (500-1)	1180-1 458 (500-1)	1180-1½ 458 (500-1½)	1280-2 558 (600-2)



RNAV (GPS) RWY 29