

TORRANCE, CALIFORNIA

AL-5179 (FAA)

ILS or LOC RWY 29R

TORRANCE/ZAMPERINI FIELD (TOA)

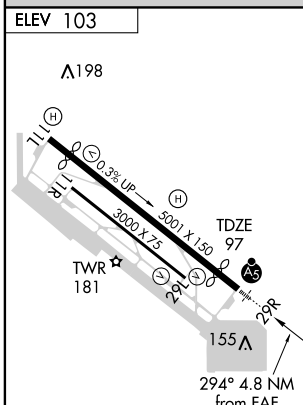
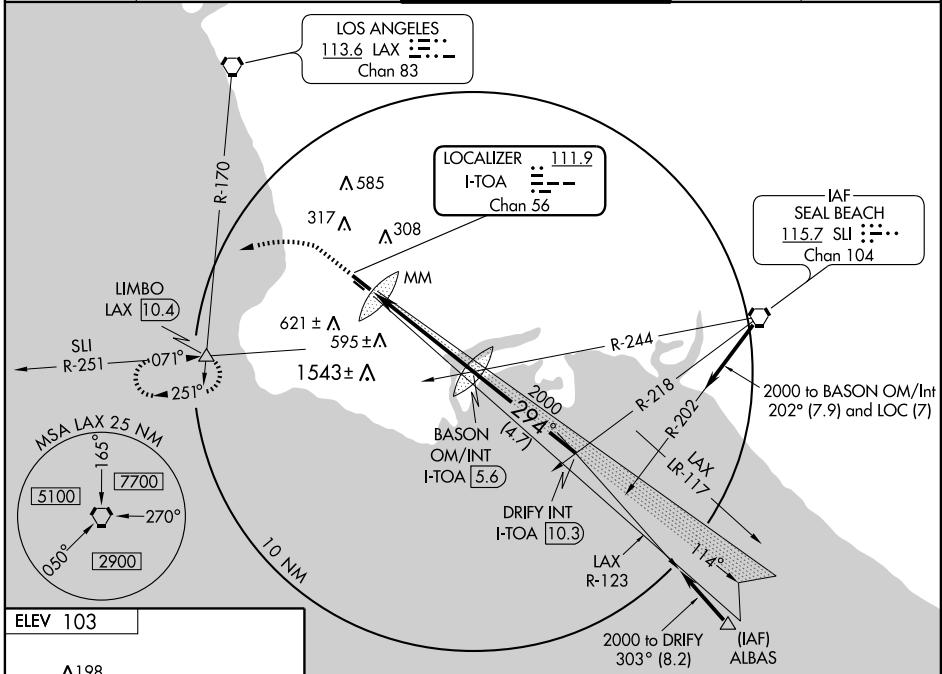
LOC/DME I-TOA 111.9 Chan 56	APP CRS 294°	Rwy Idg 4461 TDZE 97 Apt Elev 103
---	------------------------	--

⚠ When control tower closed, except for operators with approved weather reporting service, use Los Angeles altimeter setting. Inoperative table does not apply. Circling NA southwest of Rwy 11R-29L.

MALSR

MISSED APPROACH: Climb to 1100 then climbing left turn to 3000 via heading 250° and LAX R-170 to LIMBO Int/LAX 10.4 DME and hold.

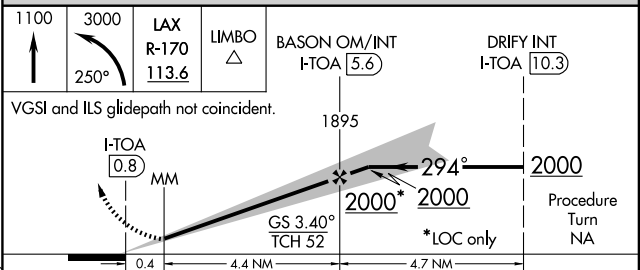
ATIS 125.6	SOCAL APP CON 124.3 363.2 (Rwys 11L, 11R) 127.2 269.6 (Rwys 29L, 29R)	TORRANCE TOWER* 135.6 257.8 (NORTH) 124.0 (CTAF) 257.8 (SOUTH)	GND CON 120.9	UNICOM 122.95
----------------------	---	--	-------------------------	-------------------------



REIL Rwy 29L
MIRL Rwys 11L-29R and 11R-29L

FAF to MAP 4.8 NM

Knots	60	90	120	150	180
Min:Sec	4:48	3:12	2:24	1:55	1:36



CATEGORY	A	B	C	D
S-ILS 29R	381- ³ / ₄	284 (300- ³ / ₄)		NA
S-LOC 29R	620-1	523 (600-1)		NA
CIRCLING	620-1	517 (600-1)		NA

LOS ANGELES ALTIMETER SETTING MINIMUMS

S-ILS 29R	405-1	308 (400-1)		NA
S-LOC 29R	660-1	563 (600-1)		NA
CIRCLING	660-1	557 (600-1)		NA

TORRANCE, CALIFORNIA
Amdt 2B 09015

33°48'N - 118° 20'W

TORRANCE/ZAMPERINI FIELD (TOA) ILS or LOC RWY 29R

SW-3, 22 OCT 2009 to 19 NOV 2009

SW-3, 22 OCT 2009 to 19 NOV 2009