

RNAV (GPS) RWY 11

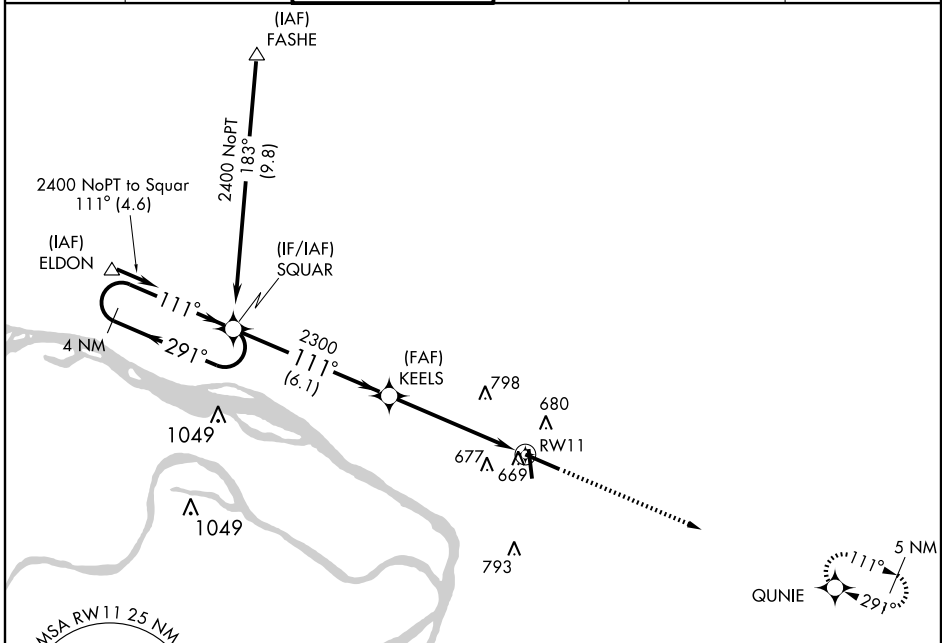
ALTON/ST. LOUIS RGNL (ALN)

APP CRS	Rwy Idg	8098
111°	TDZE	540
	Apt Elev	544

⚠ If local altimeter not received, use Lambert-St. Louis Intl altimeter setting and increase all MDA's 60 feet. VDP NA with Lambert-St. Louis Intl altimeter setting. DME/DME RNP-0,3 NA.

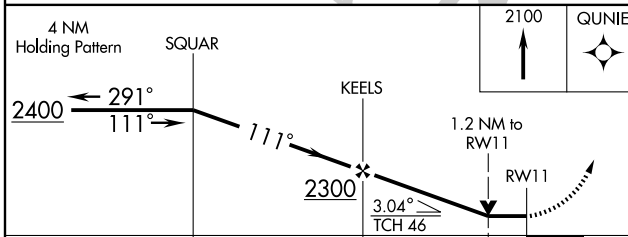
MISSED APPROACH: Climb to 2100 direct GUNIE and hold.

ATIS 128.0	ST LOUIS APP CON 124.2 353.9	REGIONAL TOWER ★ 126.0 (CTAF) 239.0	GND CON 120.2	CLNC DEL 120.2	UNICOM 122.95
----------------------	--	---	-------------------------	--------------------------	-------------------------



EC-3, 22 OCT 2009 to 19 NOV 2009

EC-3, 22 OCT 2009 to 19 NOV 2009



CATEGORY	A	B	C	D
RNAV MDA	980-1	440 (500-1)	980-1¼ 440 (500-1¼)	980-1½ 440 (500-1½)
CIRCLING	980-1 436 (500-1)	1000-1 456 (500-1)	1000-1½ 456 (500-1½)	1100-2 556 (600-2)

REIL Rwy 11
HIRL Rwy 11-29 **Ⓢ**
MIRL Rwy 17-35 **Ⓢ**