

LINDBERGH TWO DEPARTURE

ATIS 128.0
CLNC DEL 120.2
GND CON 120.2
RGNL TWR *
126.0 (CTAF) 239.0
ST LOUIS DEP CON
124.2 353.9

KLAIR
N38° 24.67'
W91° 09.61'

(SAGME)
N38° 18.78'
W90° 58.09'

(SAJOY)
N38° 11.75'
W90° 33.36'

(SAGZA)
N38° 13.67'
W90° 45.13'

MYERZ
N37° 11.90'
W90° 39.85'
H-5

MALDEN
111.2 MAW
Chan 49
N36° 33.31'-W89° 54.68'
L-16, H-6

WALNUT RIDGE
114.5 ARG
Chan 92
N36° 06.60'-W90° 57.22'
L-16, H-6

MAPLES
113.4 MAP
Chan 81
N37° 35.45'-W91° 47.31'
L-16

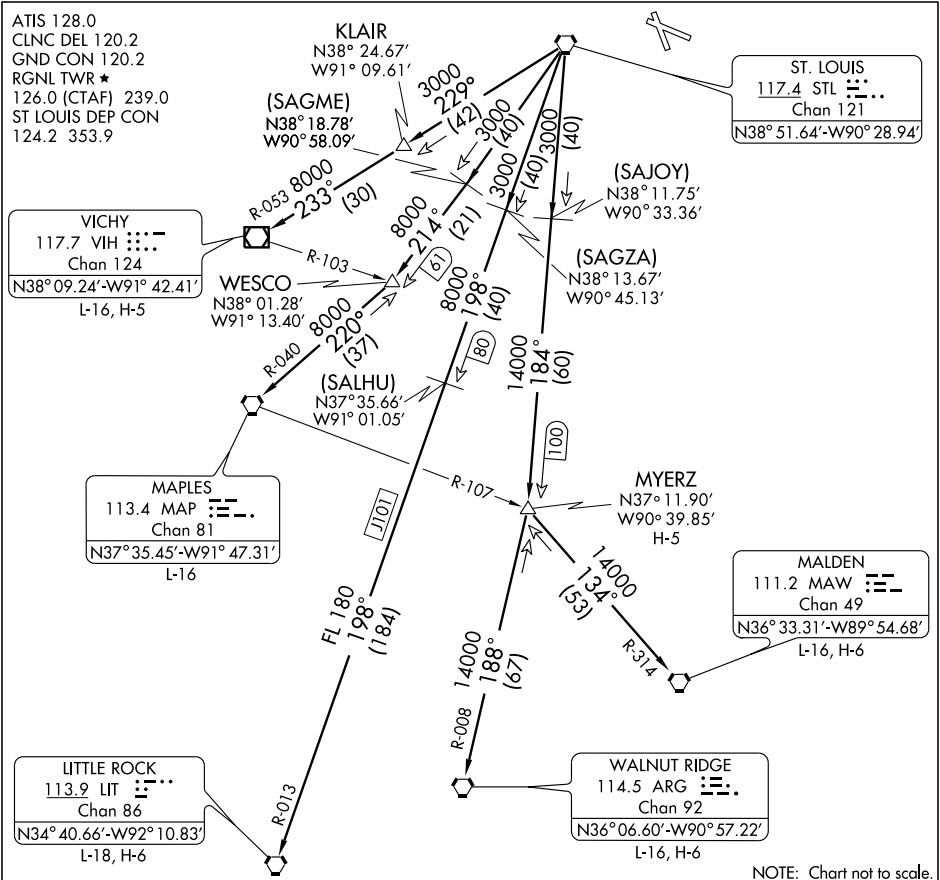
LITTLE ROCK
113.9 LIT
Chan 86
N34° 40.66'-W92° 10.83'
L-18, H-6

VICHY
117.7 VIH
Chan 124
N38° 09.24'-W91° 42.41'
L-16, H-5

WESCO
N38° 01.28'
W91° 13.40'

(SALHU)
N37° 35.66'
W91° 01.05'

ST. LOUIS
117.4 STL
Chan 121
N38° 51.64'-W90° 28.94'



EC-3, 22 OCT 2009 to 19 NOV 2009

EC-3, 22 OCT 2009 to 19 NOV 2009

DEPARTURE ROUTE DESCRIPTION

Fly assigned heading for vector to appropriate route. Departures climb and maintain 2500 feet or assigned altitude. Expect clearance to filed altitude 10 minutes after departure.

LITTLE ROCK TRANSITION (LINDY2.LIT): From over STL VORTAC via STL R-198 and LIT R-013 to LIT VORTAC.

MALDEN TRANSITION (LINDY2.MAW): From over STL VORTAC via STL R-184 to MYERZ INT, then via MAW R-314 to MAW VORTAC.

MAPLES TRANSITION (LINDY2.MAP): From over STL VORTAC via STL R-214 to WESCO INT, then via MAP R-040 to MAO VORTAC.

MYERZ TRANSITION (LINDY2.MYERZ): From over STL VORTAC via STL R-184 to MYERZ INT.

VICHY TRANSITION (LINDY2.VIH): From over STL VORTAC via STL R-229 to KLAIR INT, then via VIH R-053 to VIH VOR/DME.

WALNUT RIDGE TRANSITION (LINDY2.ARG): From over STL VORTAC via STL R-184 to MYERZ INT, then via ARG R-008 to ARG VORTAC.

LINDBERGH TWO DEPARTURE