

LOC/DME I-ALN <b>108.5</b> Chan 22	APP CRS <b>291°</b>	Rwy Idg <b>8098</b> TDZE <b>531</b> Apt Elev <b>544</b>
--	------------------------	--

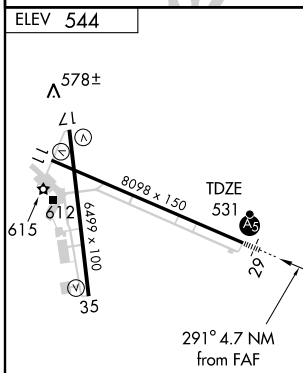
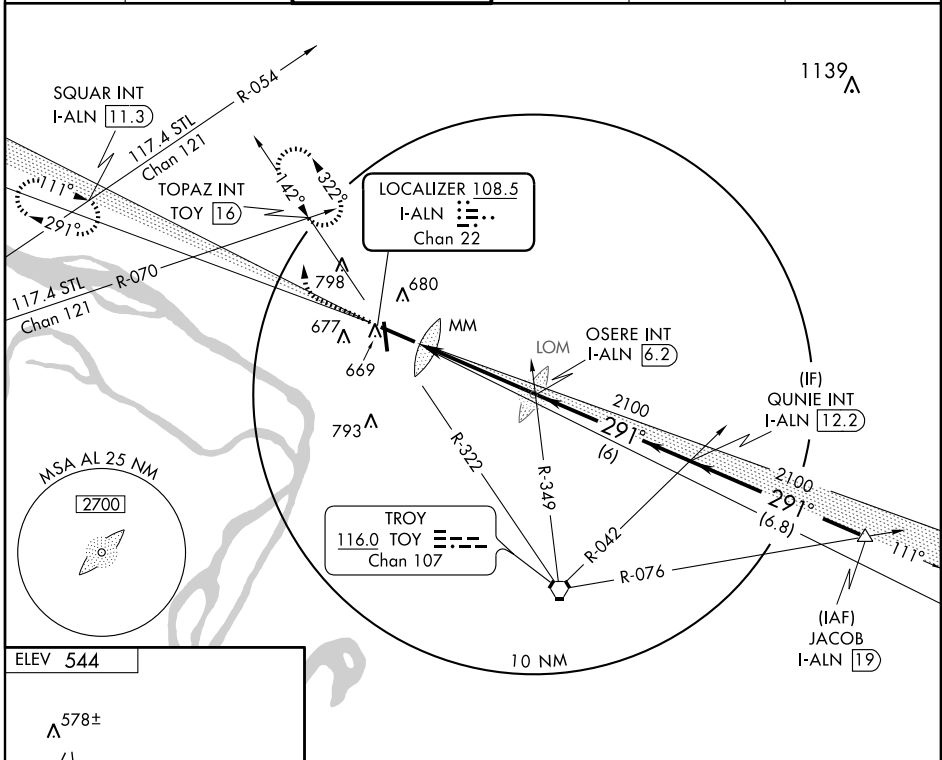
# ILS or LOC RWY 29

ALTON/ST. LOUIS RGNL (ALN)

**▼** If local altimeter setting not received, use Lambert-St. Louis Intl altimeter setting and increase all DAs/MDAs 60 feet.  
**▲** VDP NA when Lambert-St Louis Intl altimeter setting.

**MALS** MISSED APPROACH: Climb to 1000 then climbing right turn to 2200 via HDG 310° and TOY VORTAC R-322 to TOPAZ Int/TOY 16 DME and hold.

ATIS <b>128.0</b>	ST LOUIS APP CON <b>124.2 353.9</b>	REGIONAL TOWER* <b>126.0 (CTAF) 239.0</b>	GND CON <b>120.2</b>	CLNC DEL <b>120.2</b>	UNICOM <b>122.95</b>
----------------------	--	--	-------------------------	--------------------------	-------------------------



REIL Rwy 11  
 HIRL Rwy 11-29  
 MIRL Rwy 17-35

FAF to MAP 4.7 NM

Knots	60	90	120	150	180
Min:Sec	4:42	3:08	2:21	1:53	1:34

1000	2200	TOY R-322 116.0	TOPAZ INT TOY 16	OSERE INT I-ALN 6.2	QUNIE INT I-ALN 12.2	JACOB I-ALN 19	Procedure Turn NA
↑	↘	HDG 310°		2100	2100	2100	GS 3.00° TCH 55
		I-ALN 1.5	I-ALN 2.3				
		0.4	0.4	3.9 NM	6 NM	6.8 NM	
CATEGORY	A		B		C	D	
S-ILS 29	731-½ 200 (200-½)						
S-LOC 29	840-½ 309 (300-½)					840-¾ 309 (300-¾)	
CIRCLING	980-1 436 (500-1)	1000-1 456 (500-1)	1000-½ 456 (500-½)	1100-2 556 (600-2)			

EC-3, 22 OCT 2009 to 19 NOV 2009

EC-3, 22 OCT 2009 to 19 NOV 2009