

CARDS SEVEN DEPARTURE

ATIS 128.0
CLNC DEL 120.2
GND CON 120.2
RGNL TWR *
126.0 (CTAF) 239.0
ST LOUIS DEP CON
124.2 353.9

BRADFORD
114.7 BDF
Chan 94
N41°09.58'-W89°35.27'
L-27, H-5

SPINNER
112.7 SPI
Chan 74
N39°50.38'-W89°40.66'
L-27, H-5

CARDINAL
116.45 CSX
Chan 111(Y)
N38°45.16'-W90°21.65'

SKUTR
N40°04.10'
W90°03.66'

MYKEY
N39°23.05'
W90°25.92'

SKYPE
N39°21.64'
W90°13.43'

TEWHY
N39°19.37'
W90°00.33'

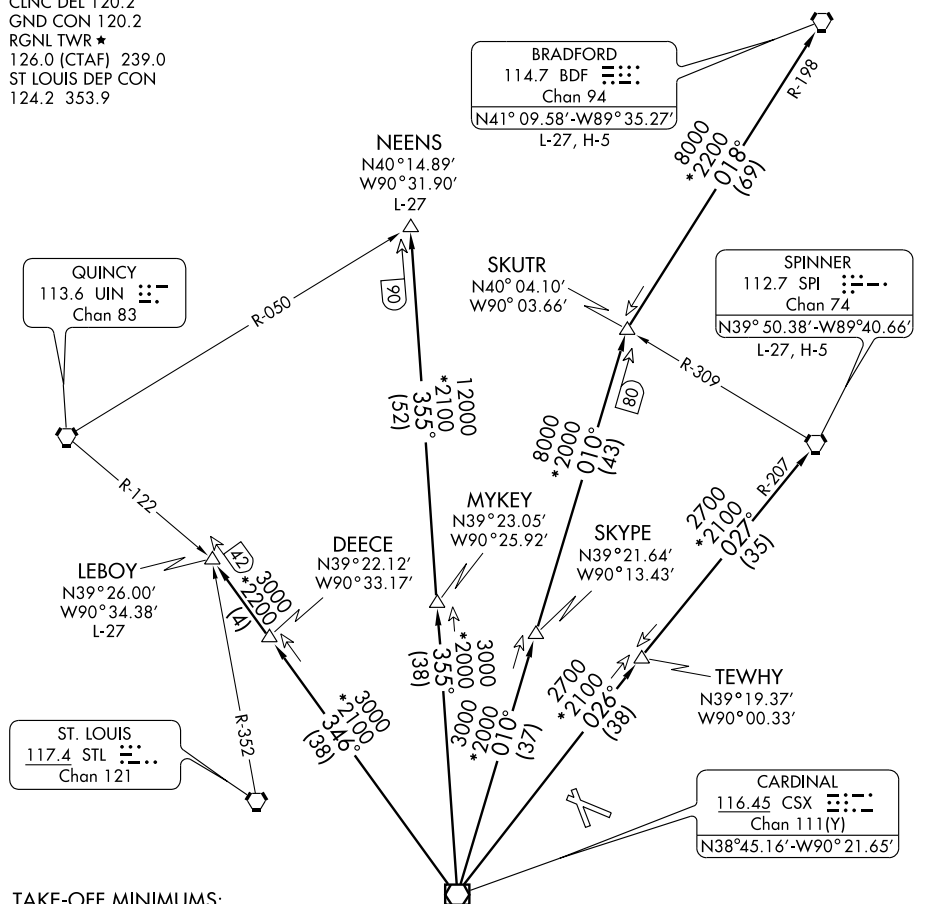
NEENS
N40°14.89'
W90°31.90'

DEECE
N39°22.12'
W90°33.17'

QUINCY
113.6 UIN
Chan 83

LEBOY
N39°26.00'
W90°34.38'
L-27

ST. LOUIS
117.4 STL
Chan 121



TAKE-OFF MINIMUMS:

Rwys 11, 17, 29, 35: STANDARD.

TAKE-OFF OBSTACLE NOTES:

Rwy 11: Tree 1876' from DER, 834' left of centerline, 65' AGL/575' MSL.
Light Pole 1067' from DER, 667' left of centerline, 25' AGL/554' MSL.

Rwy 17: Multiple Trees beginning 1520' from DER, 859' right of centerline, 82' AGL/621' MSL.
Tree 1794' from DER, 410' left of centerline, 59' AGL/598' MSL.

Rwy 29: Multiple Trees beginning 1318' from DER, 494' left of centerline, 59' AGL/579' MSL.
Light Pole 663' from DER, 528' left of centerline, 10' AGL/559' MSL.
Tree 1481' from DER, 501' right of centerline, 66' AGL/578' MSL.

Rwy 35: Multiple trees and Light Pole beginning 980' from DER, 574' left of centerline,
67' AGL/596' MSL.

(NARRATIVE ON FOLLOWING PAGE)

NOTE: Chart not to scale.
NOTE: DME and RADAR REQUIRED.

CARDS SEVEN DEPARTURE

EC-3, 22 OCT 2009 to 19 NOV 2009

EC-3, 22 OCT 2009 to 19 NOV 2009