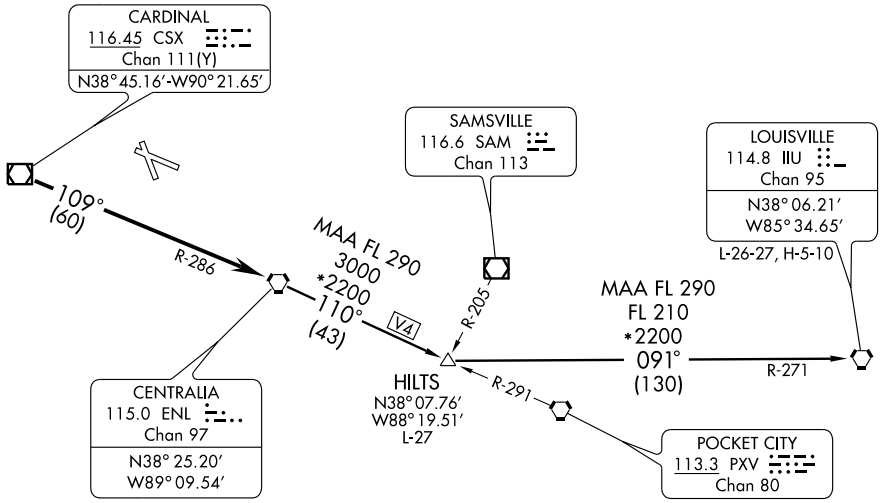


# BLUES TWO DEPARTURE

ATIS 128.0  
CLNC DEL 120.2  
GND CON 120.2  
RGNL TWR \*  
126.0 (CTAF) 239.0  
ST LOUIS DEP CON  
124.2 353.9



EC-3, 22 OCT 2009 to 19 NOV 2009

EC-3, 22 OCT 2009 to 19 NOV 2009

NOTE: For Turbojets only.  
NOTE: Chart not to scale.

## DEPARTURE ROUTE DESCRIPTION

Fly assigned heading for vector to appropriate route. From over CSX VOR/DME via CSX R-109 and ENL R-286 to ENL VORTAC. Then via (transition) or (assigned route). Departures climb and maintain 2500 feet or assigned altitude. Expect clearance to filed altitude 10 minutes after departure.

**HILTS TRANSITION (BLUES2.HILTS):** From over ENL VORTAC via ENL R-110 to HILTS INT.

**LOUISVILLE TRANSITION (BLUES2.IIU):** From over ENL VORTAC via ENL R-110 to HILTS INT, then via IIU R-271 to IIU VORTAC.