

FORT RUCKER, ALABAMA

# COPTER RNAV (GPS) 069°

AL-5176 [USA]

LOWE AHP (KLOR)

APCH CRS <b>069°</b>	Rwy Idg TDZE Arpt Elev	<b>N/A</b> <b>N/A</b> <b>294</b>
-------------------------	------------------------------	--

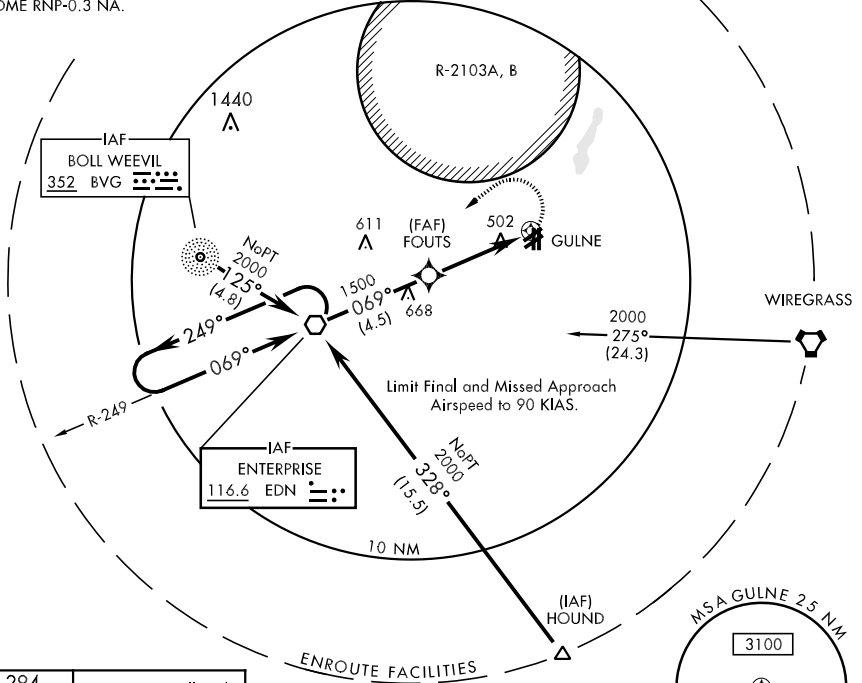
**▼** MISSED APPROACH: Climbing left turn to 2000 direct to EDN VOR and hold.

ATIS <b>361.1</b>	ASOS <b>118.225</b>	CAIRNS APP CON <b>133.45 239.4</b>	LOWE TOWER ★ <b>141.3 289.15</b>	GND CON <b>357.15</b>
----------------------	------------------------	---------------------------------------	-------------------------------------	--------------------------

When local altimeter setting not received, use Cairns AAF altimeter setting.

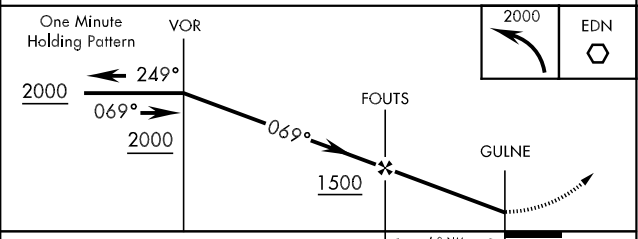
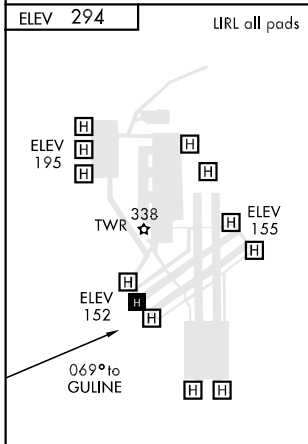
**NOT FOR CIVIL USE.**

DME/DME RNP-0.3 NA.



SE-4, 22 OCT 2009 to 19 NOV 2009

SE-4, 22 OCT 2009 to 19 NOV 2009



CATEGORY	COPTER	
LNAV-MDA	760-¾	519 (600-¾)

FORT RUCKER, ALABAMA  
Amdt 1 09211

31° 21' N-85° 45' W

LOWE AHP (KLOR)

# COPTER RNAV (GPS) 069°