

# RNAV (GPS) RWY 13

BEMIDJI RGNL (BJI)

APP CRS	Rwy Idg	<b>7002</b>
<b>130°</b>	TDZE	<b>1391</b>
	Apt Elev	<b>1391</b>

For inoperative MALSR, increase LNAV Cats A/B/C visibility to 1 mile, Cat D visibility to 1/4 mile. DME/DME RNP -0.3 NA. Visibility reduction by helicopters NA. VDP NA when using Park Rapids altimeter setting. When local altimeter setting not received, use Park Rapids altimeter setting, and increase all MDA 100 feet. For inoperative MALSR when using Park Rapids altimeter setting, increase LNAV Cats A/B visibilities to 1 mile.

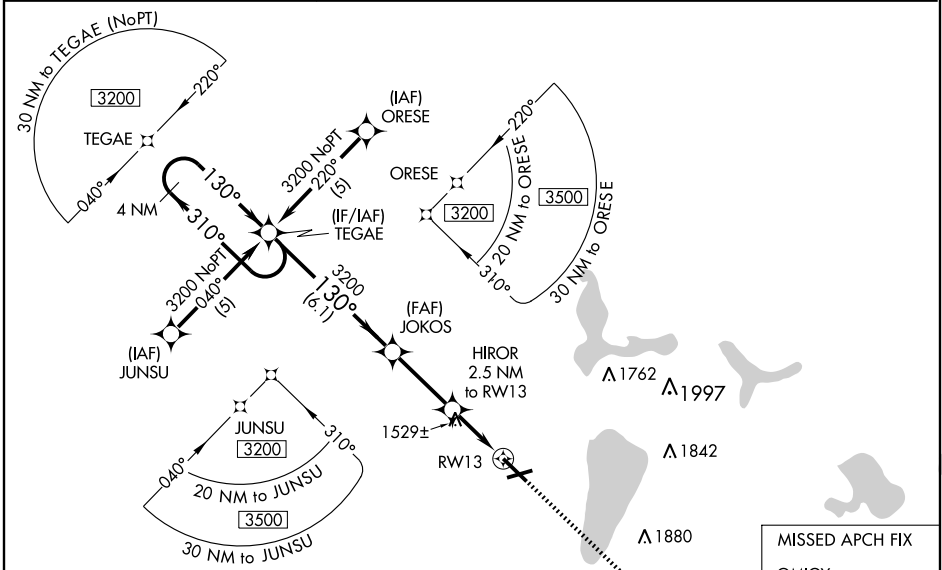
**MALSR**

**MISSED APPROACH:** Climb to 3200 direct OMIGY and hold.

AWOS-3  
**119.275**

MINNEAPOLIS CENTER  
**134.75 251.1**

UNICOM  
**122.8 (CTAF) 0**

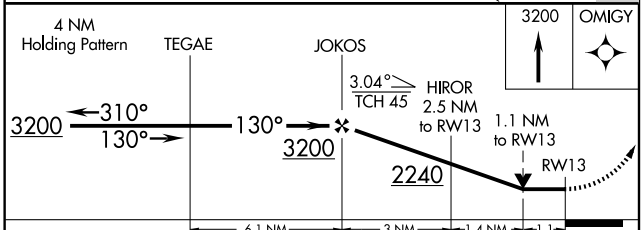


NC-1, 22 OCT 2009 to 19 NOV 2009

NC-1, 22 OCT 2009 to 19 NOV 2009

ELEV 1391 **D**

HIRL Rwy 13-31 **0**  
MIRL Rwy 7-25 **0**  
REIL Rwy 7, 13, and 25 **0**



CATEGORY	A	B	C	D
LNAV MDA	1780-3/4 389 (400-3/4)			1780-1 389 (400-1)
CIRCLING	1840-1 449 (500-1)	1860-1 469 (500-1)	1860-1 1/2 469 (500-1 1/2)	1960-2 569 (600-2)