

BEMIDJI, MINNESOTA

AL-5174 (FAA)

# ILS or LOC/DME RWY 25

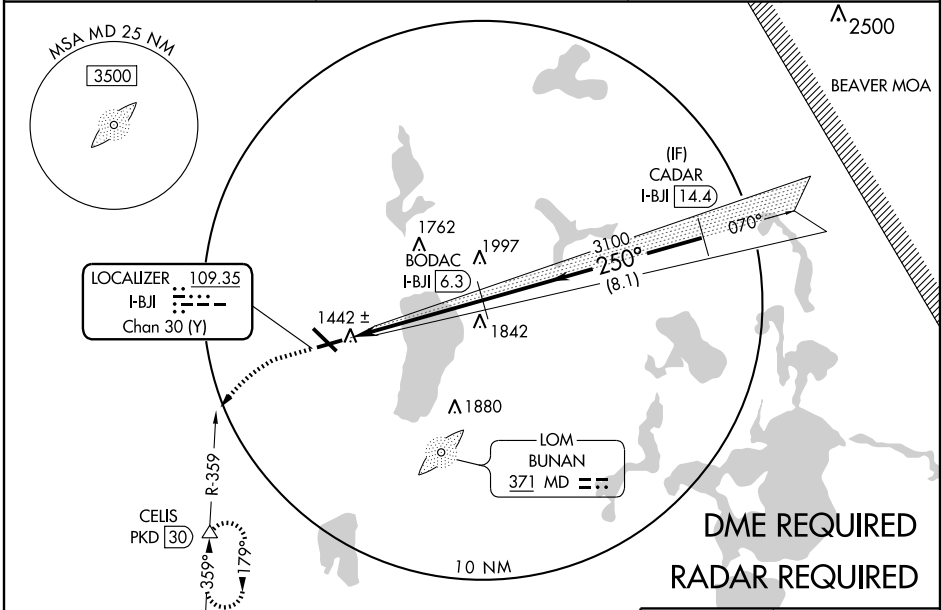
BEMIDJI RGNL (BJI)

LOC/DME I-BJI <b>109.35</b> Chan 30 (Y)	APP CRS <b>250°</b>	Rwy ldg TDZE <b>5700</b> <b>1389</b> Apt Elev <b>1391</b>
---	------------------------	---

**NA** Visibility reduction by helicopters NA.  
VDP NA when using Park Rapids altimeter setting.  
If local altimeter setting not received, use Park Rapids altimeter setting; increase DA to 293 feet and visibility all Cats 1/4 mile; increase all MDAs 100 feet, and visibility Cats C/D 1/2 mile.

**MISSED APPROACH:** Climb to 2300 then climbing left turn to 3400 via PKD VOR/DME R-359 to CELIS/PKD 30 DME and hold.

AWOS-3 <b>119.275</b>	MINNEAPOLIS CENTER <b>134.75 251.1</b>	UNICOM <b>122.8</b> (CTAF) <b>D</b>
--------------------------	---	--

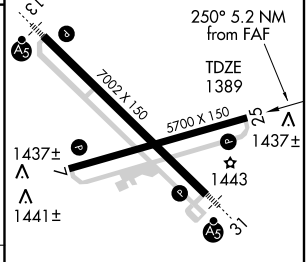
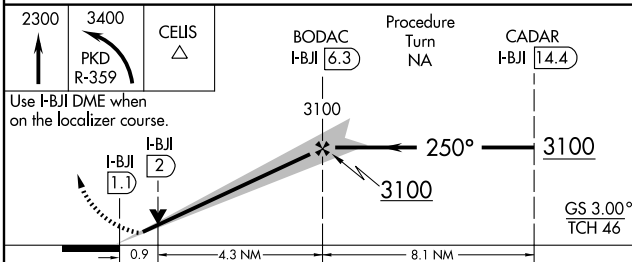


NC-1, 22 OCT 2009 to 19 NOV 2009

NC-1, 22 OCT 2009 to 19 NOV 2009

CELIS PKD 30	PARK RAPIDS 110.6 PKD Chan 43
--------------	-------------------------------

ELEV 1391	<b>D</b>
-----------	----------



CATEGORY	A	B	C	D
S-ILS 25	1589-3/4 200 (200-3/4)			
S-LOC 25	1700-1 311 (400-1)			
CIRCLING	1860-1 469 (500-1)	1860-1 1/2 469 (500-1 1/2)		1960-2 569 (600-2)

HIRL Rwy 13-31 <b>D</b>
MIRL Rwy 7-25 <b>D</b>
REIL Rws 7, 25, and 31 <b>D</b>

BEMIDJI, MINNESOTA  
Orig 09295

47°31'N - 94°56'W

# ILS or LOC/DME RWY 25

BEMIDJI RGNL (BJI)