

WILLISTON, NORTH DAKOTA

AL-5173 (FAA)

VORTAC ISN 116.3 Chan 110	APP CRS 303°	Rwy Idg TDZE Apt Elev	6650 1930 1982
---	------------------------	-----------------------------	---

VOR/DME or GPS RWY 29

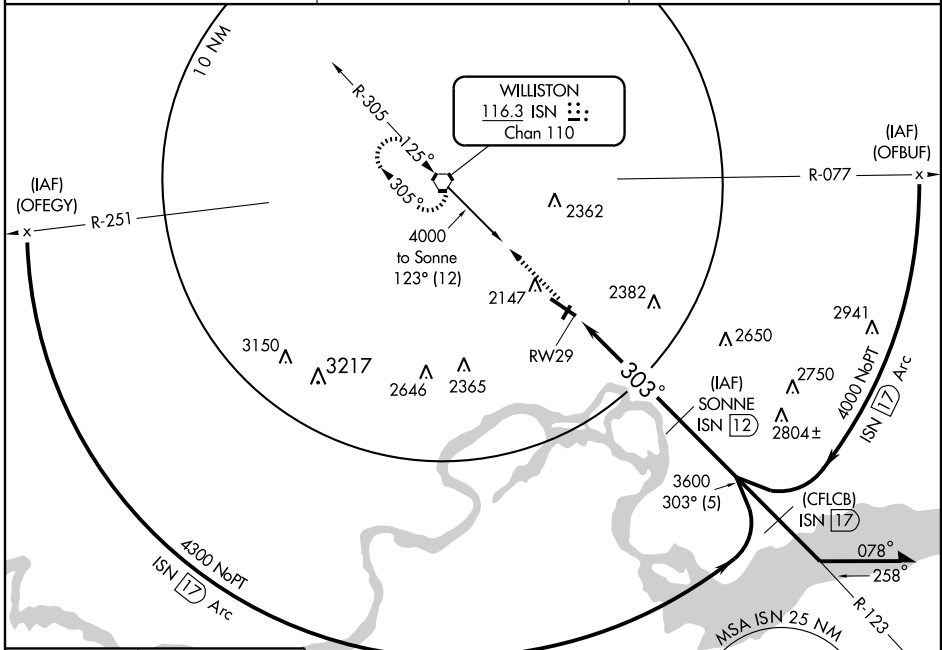
WILLISTON/SLOULIN FIELD INTL (ISN)

▼ Inoperative components table does not apply.

MALSR 

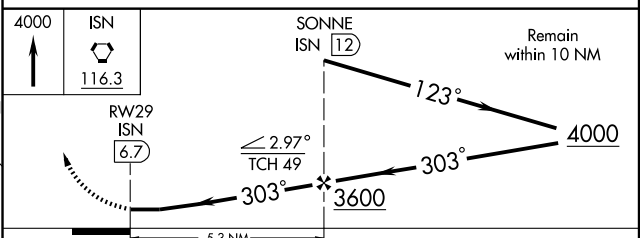
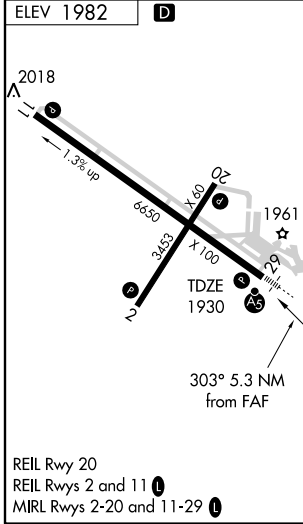
MISSED APPROACH: Climb to 4000 direct ISN VORTAC and hold.

ASOS 125.92	SALT LAKE CITY CENTER 126.85 305.2	UNICOM 122.8 (CTAF) 0
-----------------------	--	---------------------------------



NC-1, 22 OCT 2009 to 19 NOV 2009

NC-1, 22 OCT 2009 to 19 NOV 2009



CATEGORY	A	B	C	D
S-29	2420-1 490 (500-1)		2420-1¼ 490 (500-1¼)	2420-1½ 490 (500-1½)
CIRCLING	2500-1 518 (600-1)		2500-1½ 518 (600-1½)	2560-2 578 (600-2)

WILLISTON, NORTH DAKOTA
Amdt 3B 09295

48°11'N - 103°39'W

WILLISTON/SLOULIN FIELD INTL (ISN)
VOR/DME or GPS RWY 29