

RNAV (GPS) RWY 6L

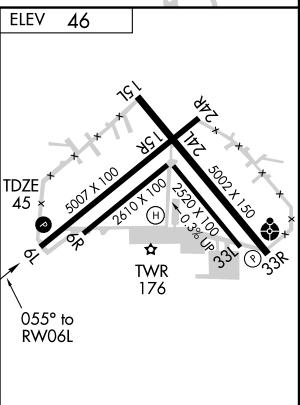
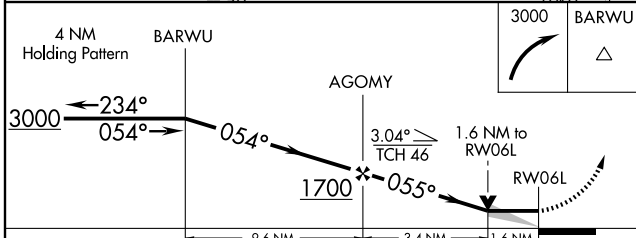
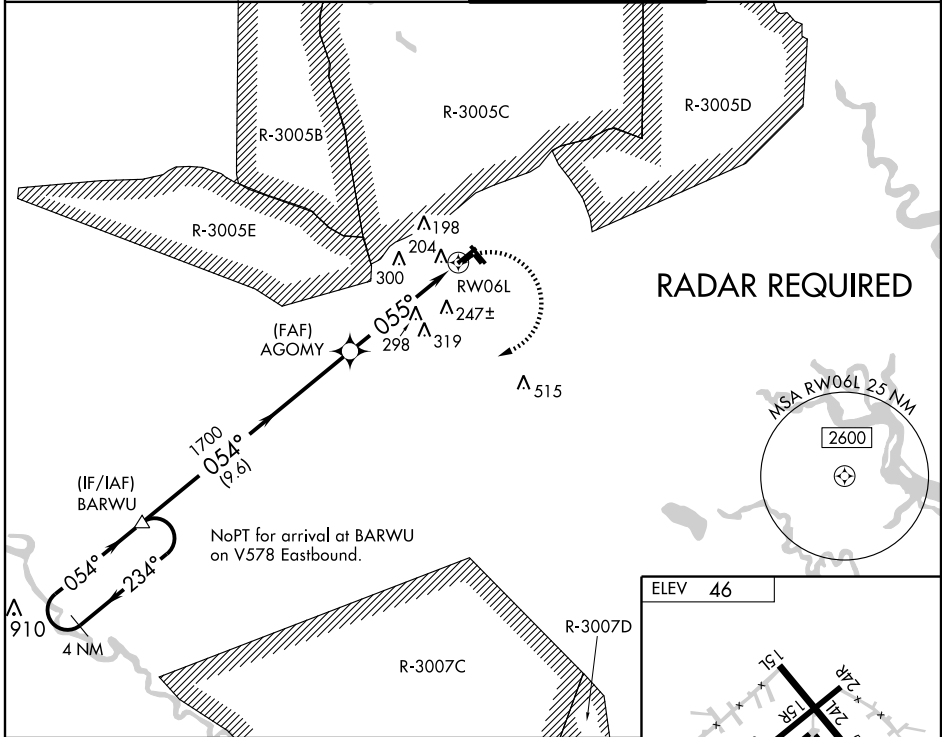
WRIGHT AAF (FORT STEWART)/MIDCOAST RGNL (LHW)

APP CRS	Rwy Idg	5007
055°	TDZE	45
	Apt Elev	46

▽ DME/DME RNP-0.3 NA.
 When local altimeter setting not received, use Savannah altimeter setting and increase all MDA 60 feet, LNAV Cat. C and D visibility ¼ mile, and Circling Cat. C visibility ¼ mile.
▲ ASR Circling NA northeast of Rwy 15L/33R.
 VDP NA using Savannah altimeter setting.
 NA when R3005C/D or R3007C is active and LHW tower is closed.

MISSED APPROACH: Climbing right turn to 3000 direct BARWU and hold.

ATIS ★ 118.475 239.025	SAVANNAH APP CON ★ 120.4 353.775	WRIGHT TOWER ★ 126.25 (CTAF) 269.275	GND CON 121.7 273.575
----------------------------------	--	--	---------------------------------



CATEGORY	A	B	C	D
LNAV MDA	600-1	555 (600-1)	600-1½ 555 (600-1½)	600-1¾ 555 (600-1¾)
CIRCLING	600-1	554 (600-1)	600-1½ 554 (600-1½)	600-2 554 (600-2)

HIRL Rwy 6L-24R and 15L-33R

SE-4, 22 OCT 2009 to 19 NOV 2009

SE-4, 22 OCT 2009 to 19 NOV 2009