

APP CRS	Rwy ldg	5002
325°	TDZE	40
	Apt Elev	46

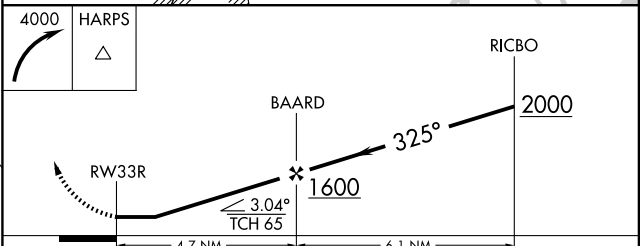
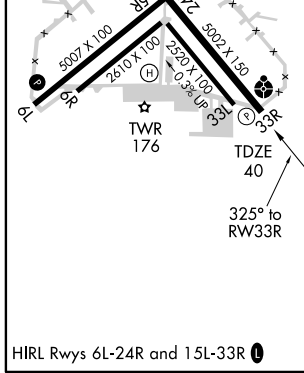
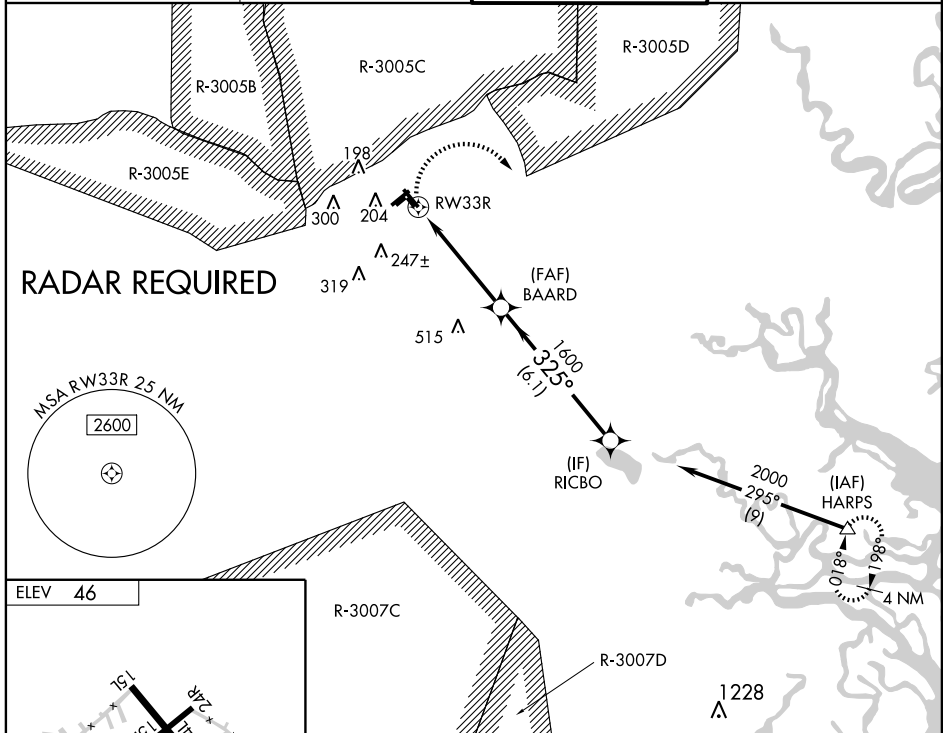
RNAV (GPS) RWY 33R

WRIGHT AAF (FORT STEWART)/MIDCOAST RGNL (LHW)

ASR
 Inoperative table does not apply to ODALS Rwy 33R.
 DME/DME RNP-0.3 NA. Visibility reduction by helicopters NA.
 When local altimeter setting not received, use Savannah altimeter setting and increase all MDA 60 feet and Circling Cat. C visibility ¼ mile.
 Circling NA northeast of Rwy 15L/33R.
 NA when R3005C/D is active and LHW tower is closed.

ODALS
 MISSED APPROACH: Climbing right turn to 4000 direct HARPS and hold.

ATIS ★ 118.475 239.025	SAVANNAH APP CON ★ 120.4 353.775	WRIGHT TOWER ★ 126.25 (CTAF) 269.275	GND CON 121.7 273.575
----------------------------------	--	--	---------------------------------



CATEGORY	A	B	C	D
LNAV MDA	480-1	440 (500-1)	480-1¼ 440 (500-1¼)	480-1½ 440 (500-1½)
CIRCLING	560-1	514 (600-1)	600-1½ 554 (600-1½)	600-2 554 (600-2)

SE-4, 22 OCT 2009 to 19 NOV 2009

SE-4, 22 OCT 2009 to 19 NOV 2009