

NDB RWY 33R

WRIGHT AAF (FORT STEWART)/MIDCOAST RGNL (LHW)

NDB MOG 263	APP CRS 329°	Rwy Idg 5002
		TDZE 40
		Apt Elev 46

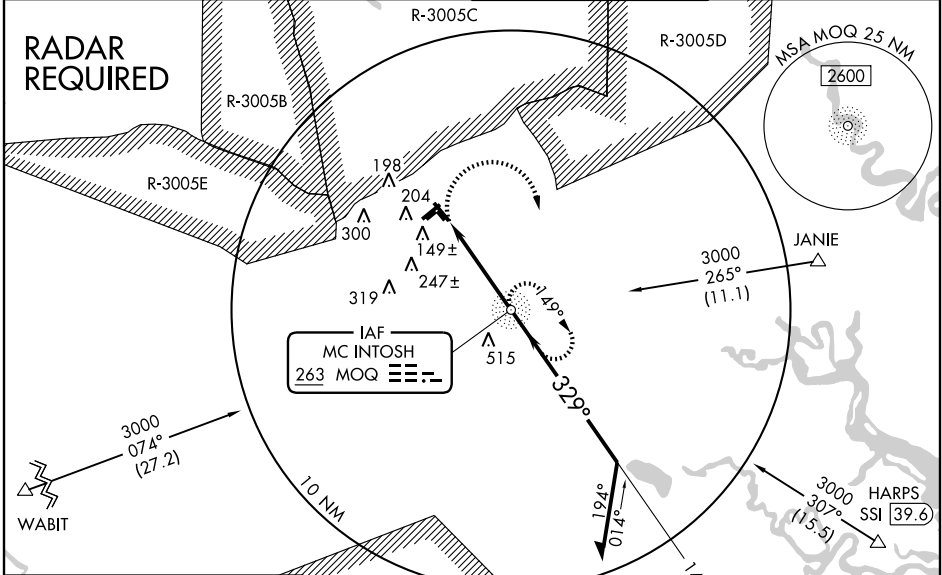
Inoperative table does not apply to ODALS Rwy 33R.
 Circling NA east of Rwy 15L/33R.
 Visibility reduction by helicopters NA.
 When local altimeter setting not received, use Savannah ASR altimeter setting and increase all MDA 60 feet, S-33R Cat. C/D visibility ¼ mile, and Circling Cat. C visibility ½ mile. NA when R3005C/D or R3007C is active and LHW tower is closed.

ODALS



MISSED APPROACH: Climbing right turn to 2100 direct MOG NDB and hold, continue climb in hold to 2100.

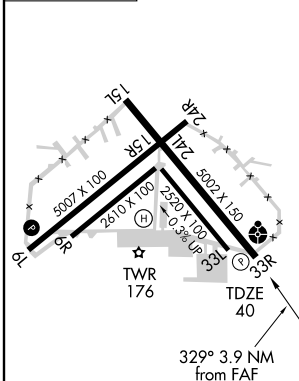
ATIS ★ 118.475 239.025	SAVANNAH APP CON ★ 120.4 353.775	WRIGHT TOWER ★ 126.25 (CTAF) 269.275	GND CON 121.7 273.575
----------------------------------	--	--	---------------------------------



SE-4, 22 OCT 2009 to 19 NOV 2009

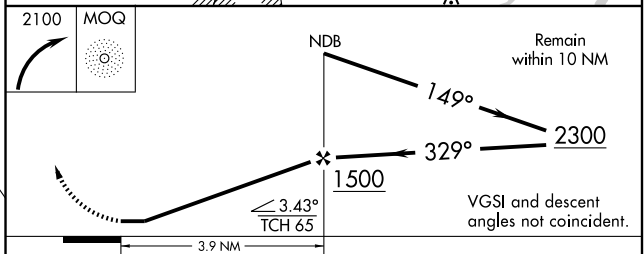
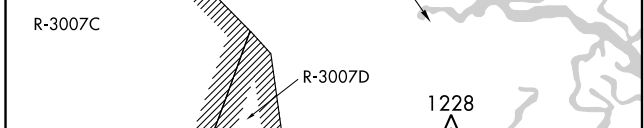
SE-4, 22 OCT 2009 to 19 NOV 2009

ELEV 46



FAF to MAP 3.9 NM

Knots	60	90	120	150	180
Min:Sec	3:54	2:36	1:57	1:34	1:18



CATEGORY	A	B	C	D
S-33R	500-1 460 (500-1)		500-1¼ 460 (500-1¼)	500-1½ 460 (500-1½)
CIRCLING	560-1 514 (600-1)		600-1½ 554 (600-1½)	600-2 554 (600-2)

NDB RWY 33R