

RNAV (GPS) RWY 35

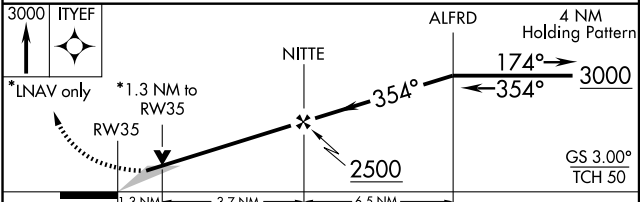
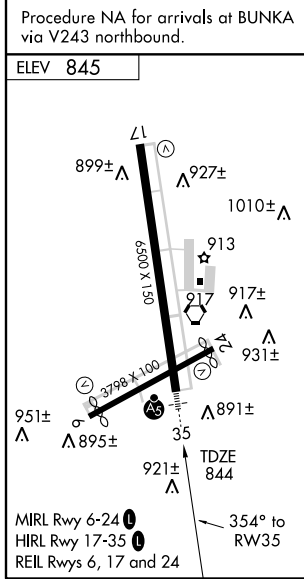
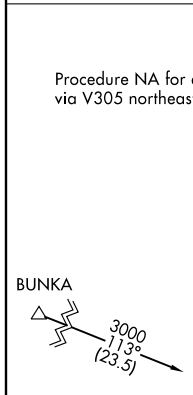
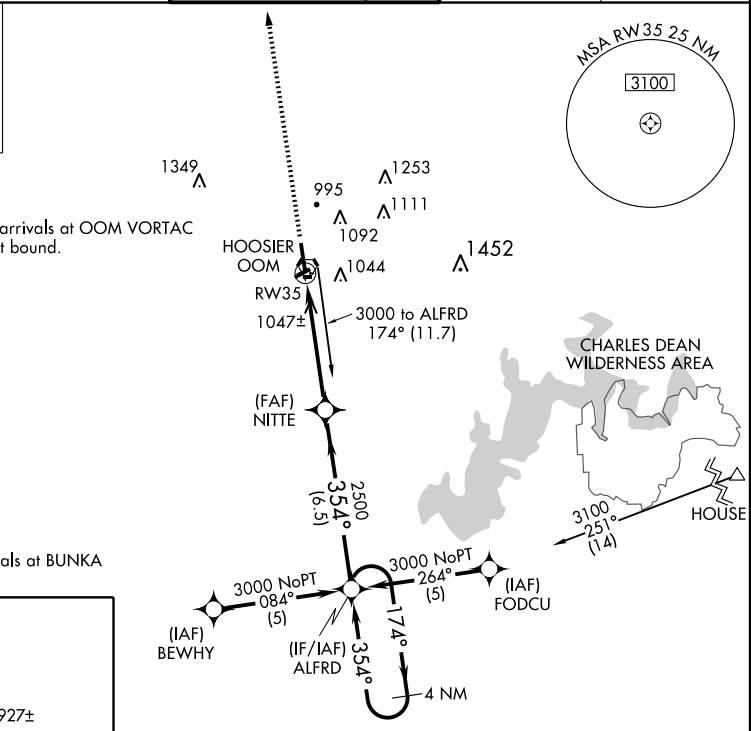
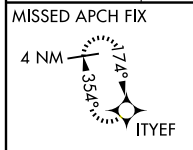
BLOOMINGTON / MONROE COUNTY (BMG)

| | | |
|--|------------------------|---|
| WAAS CH 72812 W35A | APP CRS 354° | Rwy Idg 6500 TDZE 844 Apt Elev 845 |
|--|------------------------|---|

For uncompensated Baro-VNAV systems, LNAV/VNAV NA below -16°C (4°F) or above 47°C (116°F). DME/DME RNP-0.3 NA. When local altimeter setting not received, use Terre Haute Intl-Hulman Field altimeter setting and increase all DA 121 feet and all MDA 140 feet and increase LPV all Cats, LNAV Cat C, D and Circling Cat D visibility ½ mile, LNAV/VNAV all Cats and Circling C visibility ½ mile. For inoperative MALSR when using Terre Haute Intl-Hulman Field altimeter setting: increase LPV all Cats visibility ½ mile. Baro-VNAV and VDP NA when using Terre Haute Intl-Hulman Field altimeter setting.

| | |
|-----------|---|
| MALSR | MISSED APPROACH: Climb to 3000 direct ITYEF and hold. |
|-----------|---|

| | | | | |
|----------------------|---|---|-------------------------|-------------------------|
| ASOS 110.2 | HULMAN APP CON* 128.025 339.8 | BLOOMINGTON TOWER* 120.775 (CTAF) | GND CON 121.9 | UNICOM 122.95 |
|----------------------|---|---|-------------------------|-------------------------|



| CATEGORY | A | B | C | D |
|--------------|-----------------------|-----------------------|-----------------------|-----------------------|
| LPV DA | | 1044-½ | 200 (200-½) | |
| LNAV/VNAV DA | | 1344-1¼ | 500 (500-1¼) | |
| LNAV MDA | 1300-½ | 456 (500-½) | 1300-¾ 456 (500-¾) | 1300-1 456 (500-1) |
| CIRCLING | 1380-1 535 (600-1) | 1400-1 555 (600-1) | 1400-½ 555 (600-½) | 1400-2 555 (600-2) |

EC-2, 22 OCT 2009 to 19 NOV 2009

EC-2, 22 OCT 2009 to 19 NOV 2009