

RNAV (GPS) RWY 17

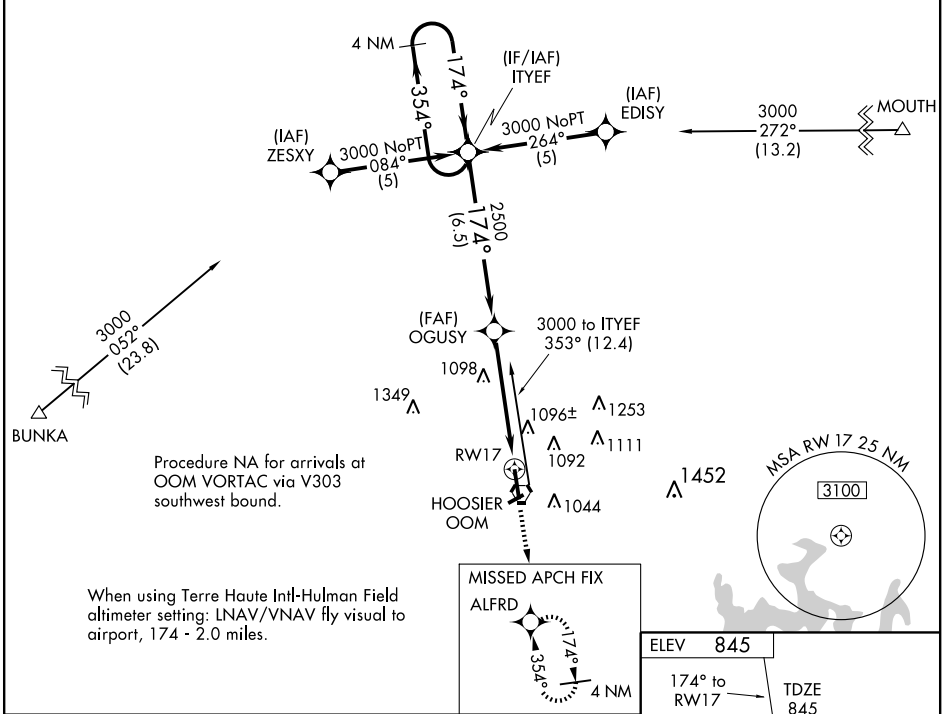
BLOOMINGTON / MONROE COUNTY (BMG)

WAAS CH 56412 W17A	APP CRS 174°	Rwy Idg 6500
		TDZE 845
		Apt Elev 845

For uncompensated Baro-VNAV systems, LNAV/VNAV NA below -16°C (4°F) or above 47°C (116°F). DME/DME RNP-0.3 NA. Visibility reduction by helicopters NA. When local altimeter setting not received, use Terre Haute Intl-Hulman Field altimeter setting and increase all DA 121 feet and all MDA 140 feet and increase LPV all Cats, LNAV Cat C, D and Circling Cat C visibility ½ mile, LNAV/VNAV Cat D and Circling D visibility ¼ mile.

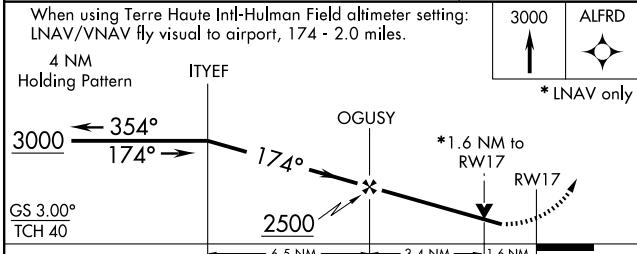
MISSED APPROACH: Climb to 3000 direct ALFRD and hold.

ASOS 110.2	HULMAN APP CON* 128.025 339.8	BLOOMINGTON TOWER* 120.775 (CTAF) 0	GND CON 121.9	UNICOM 122.95
----------------------	---	---	-------------------------	-------------------------

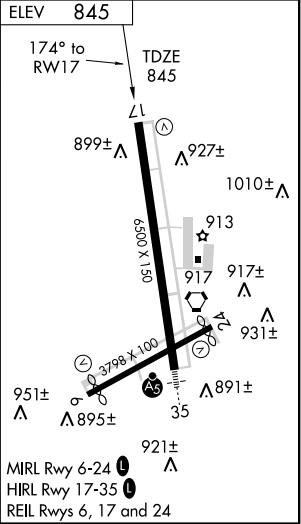


Procedure NA for arrivals at OOM VORTAC via V303 southwest bound.

When using Terre Haute Intl-Hulman Field altimeter setting: LNAV/VNAV fly visual to airport, 174 - 2.0 miles.



CATEGORY	A	B	C	D
LPV DA		1229-1¼	384 (400-1¼)	
LNAV/VNAV DA		1404-2	559 (600-2)	
LNAV MDA	1400-1 555 (600-1)		1400-1½ 555 (600-1½)	1400-1¾ 555 (600-1¾)
CIRCLING	1400-1 555 (600-1)		1400-1½ 555 (600-1½)	1400-2 555 (600-2)



MIRL Rwy 6-24
HIRL Rwy 17-35
REIL Rws 6, 17 and 24

EC-2, 22 OCT 2009 to 19 NOV 2009

EC-2, 22 OCT 2009 to 19 NOV 2009