

LOC I-BMG <b>108.3</b>	APP CRS <b>354°</b>	Rwy Idg TDZE Apt Elev	<b>6500</b> <b>844</b> <b>846</b>
---------------------------	------------------------	-----------------------------	---

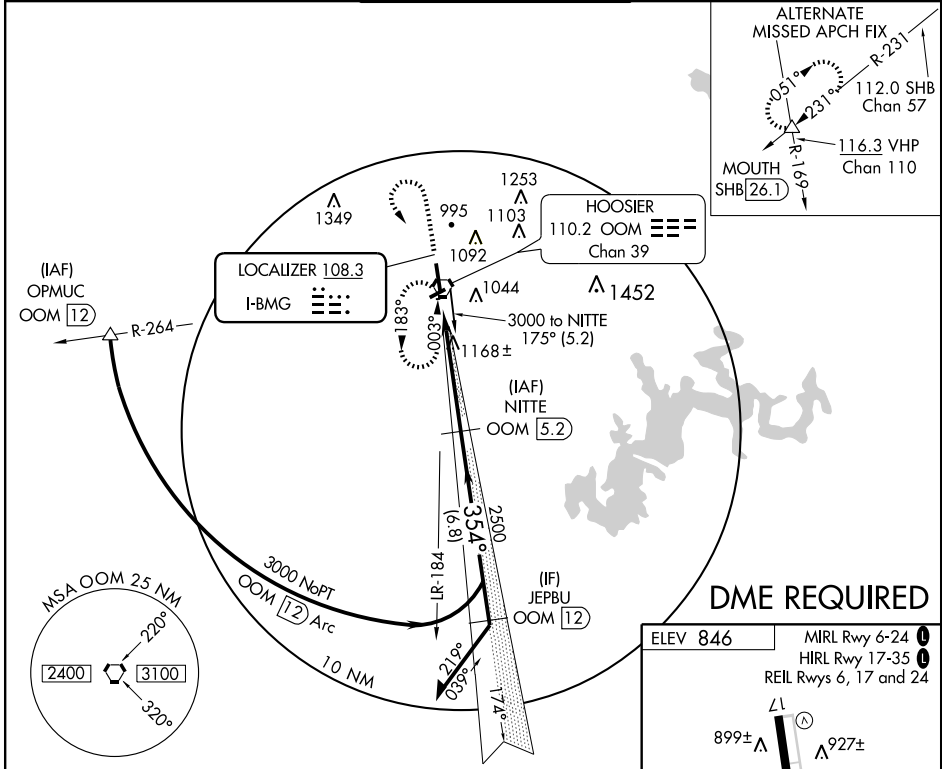
# ILS or LOC/DME RWY 35

BLOOMINGTON / MONROE COUNTY (BMG)

**▼** When local altimeter setting not received, use Terre Haute Intl-Hulman Field altimeter setting and increase all DA 121 feet and all MDA 140 feet and increase S-ILS 35 all Cats visibility ¼ mile, S-LOC 35 Cat C, D and circling Cat C visibility ½ mile and circling Cat D visibility ¼ mile. For inoperative MALS when using Terre Haute Intl-Hulman Field altimeter setting: increase S-ILS 35 all Cats visibility to 1¼ miles. DME from OOM VORTAC. Simultaneous reception of I-BMG and OOM DME required.

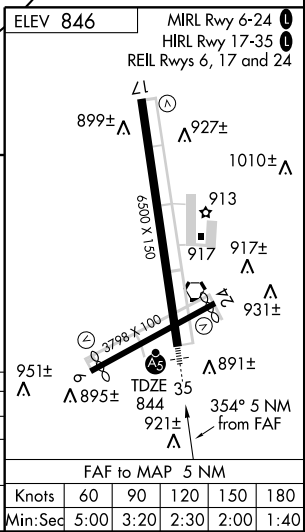
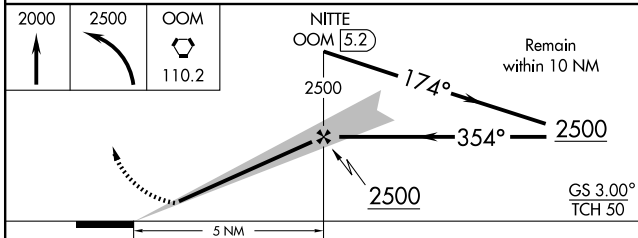
**▲** MISSED APPROACH: Climb to 2000 then climbing left turn to 2500 direct OOM VORTAC and hold.

ASOS <b>110.2</b>	HULMAN APP CON* <b>128.025 339.8</b>	BLOOMINGTON TOWER* <b>120.775 (CTAF) 0</b>	GND CON <b>121.9</b>	UNICOM <b>122.95</b>
----------------------	---	---	-------------------------	-------------------------



EC-2, 22 OCT 2009 to 19 NOV 2009

EC-2, 22 OCT 2009 to 19 NOV 2009



CATEGORY	A	B	C	D
S-ILS 35	1044-½ 200 (200-½)			
S-LOC 35	1420-½ 576 (600-½)	1420-1 576 (600-1)	1420-1 576 (600-1¼)	
CIRCLING	1420-1 574 (600-1)	1420-1 574 (600-1½)	1420-2 574 (600-2)	

F knots	60	90	120	150	180
Min:Sec	5:00	3:20	2:30	2:00	1:40