

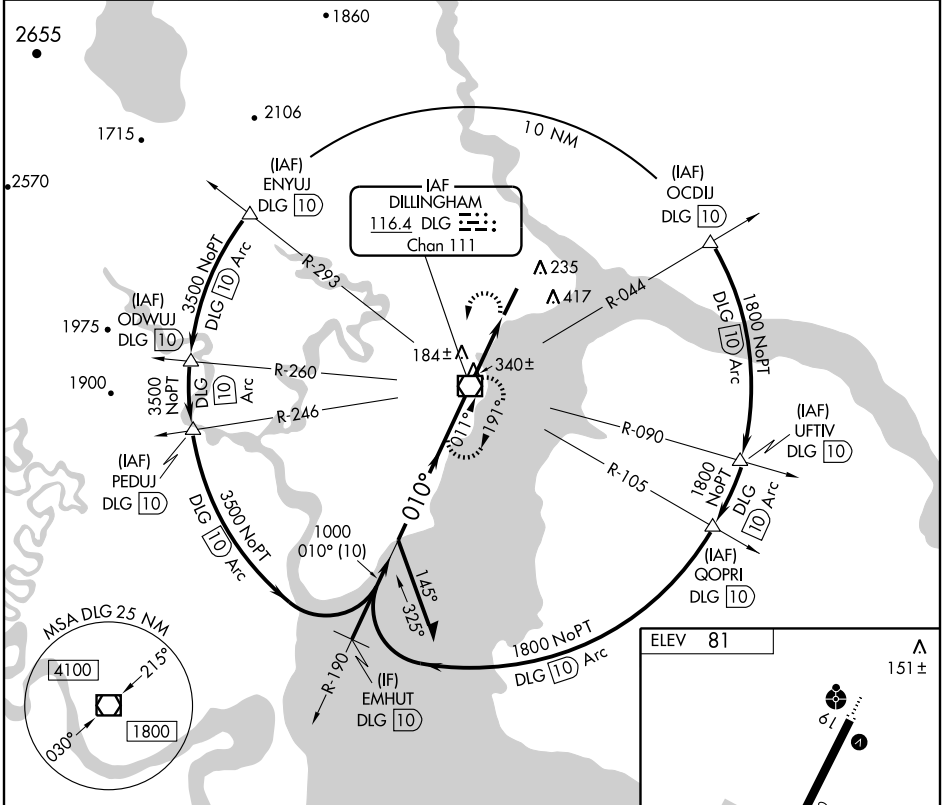
VOR RWY 1
DILLINGHAM (DLG) (PADL)

VOR/DME DLG 116.4 Chan 111	APP CRS 010°	Rwy Idg TDZE Apt Elev	6400 81 81
---	------------------------	-----------------------------	---------------------------------------

⚠ Inoperative table does not apply. Circling NA east of runway 1-19.
⚠ Visibility reduction by helicopters NA.
 When local altimeter not received, use Manokotak altimeter setting and increase all MDA 60 feet and S-1 Cat D visibility ¼ mile.

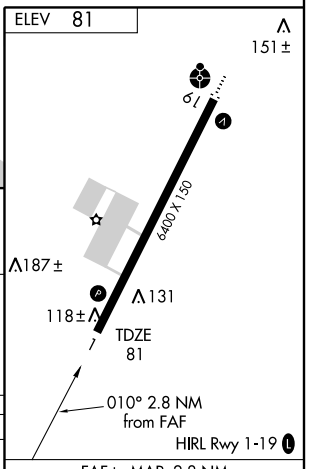
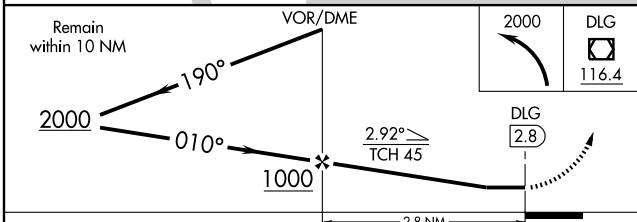
MISSED APPROACH: Climbing left turn to 2000 direct DLG VOR/DME and hold, continue climb-in-hold to 2000.

AWOS-3 135.55	ATIS * 125.0	ANCHORAGE CENTER 132.75 282.35	DILLINGHAM RADIO 123.6 (CTAF) 0
-------------------------	------------------------	--	---



AK, 22 OCT 2009 to 17 DEC 2009

AK, 22 OCT 2009 to 17 DEC 2009



CATEGORY	A	B	C	D
S-1	500-1 419 (500-1)		500-1¼ 419 (500-1¼)	
CIRCLING	600-1 519 (600-1)		600-1½ 519 (600-1½)	640-2 559 (600-2)

FAF to MAP 2.8 NM					
Knots	60	90	120	150	180
Min:Sec	2:48	1:52	1:24	1:07	0:56