

RNAV (GPS) RWY 19

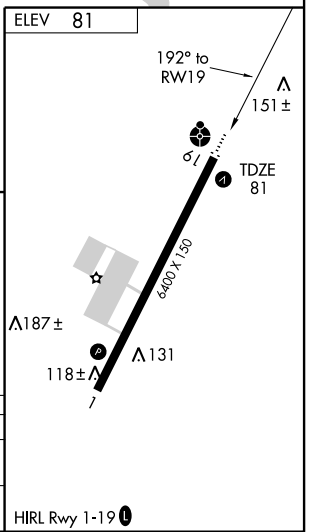
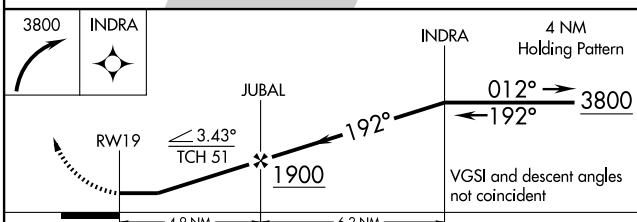
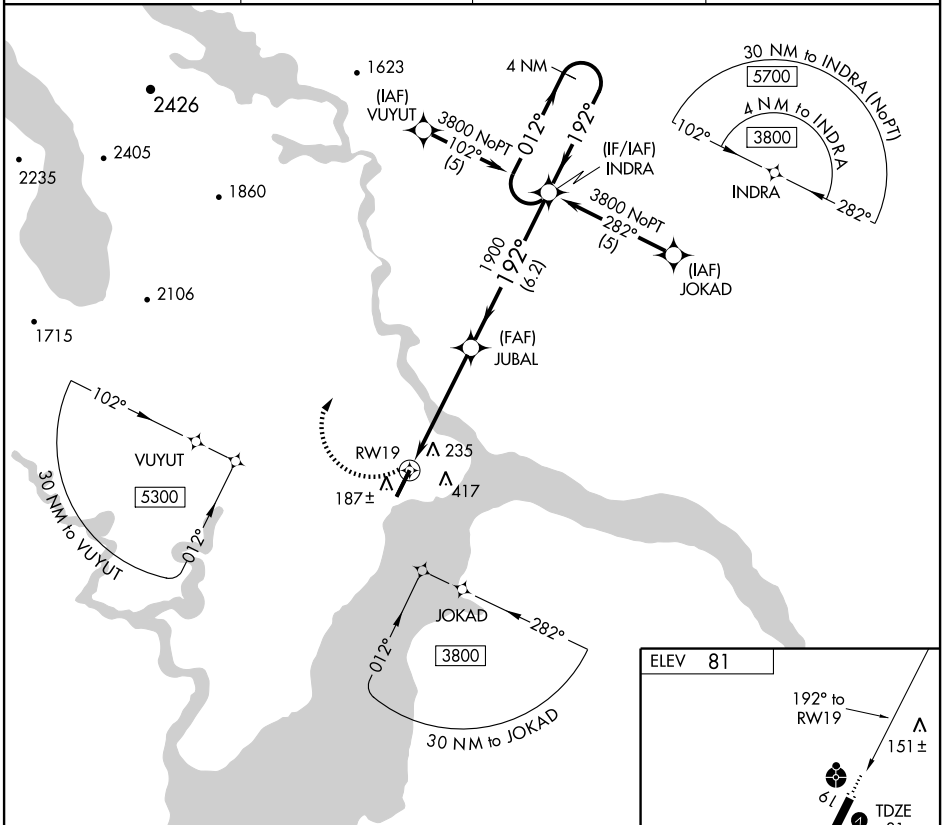
DILLINGHAM (DLG) (PADL)

APP CRS	Rwy Idg	6400
192°	TDZE	81
	Apt Elev	81

⚠ Inoperative table does not apply. Circling NA east of Rwy 1-19. DME/DME RNP-0.3 NA. Visibility reduction by helicopters NA. **⚠** When local altimeter setting not received, use Manokotak altimeter setting and increase all MDA 60 feet and visibility Cats C and D ¼ mile.

ODALS MISSED APPROACH: Climbing right turn to 3800 direct INDRA and hold, continue climb-in-hold to 3800.

AWOS-3 135.55	ATIS * 125.0	ANCHORAGE CENTER 132.75 282.35	DILLINGHAM RADIO 123.6 (CTAF) 0
-------------------------	------------------------	--	---



CATEGORY	A	B	C	D
LNVA MDA	540-1	459 (500-1)	540-1½ 459 (500-1¼)	540-1½ 459 (500-1½)
CIRCLING	600-1	519 (600-1)	600-1½ 519 (600-1½)	640-2 559 (600-2)

AK, 22 OCT 2009 to 17 DEC 2009

AK, 22 OCT 2009 to 17 DEC 2009