

# RNAV (GPS) RWY 1

DILLINGHAM (DLG) (PADL)

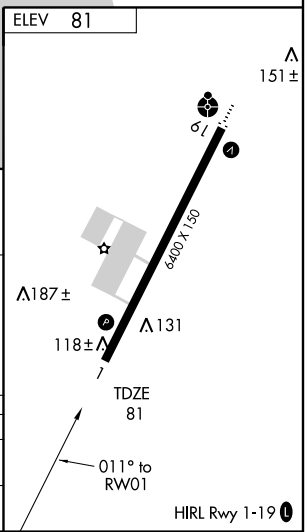
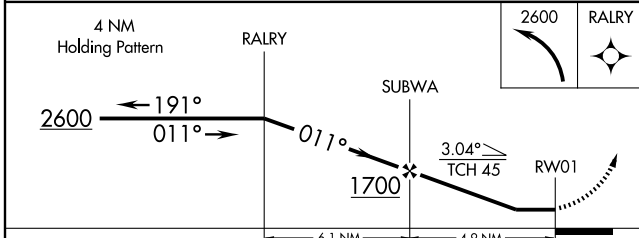
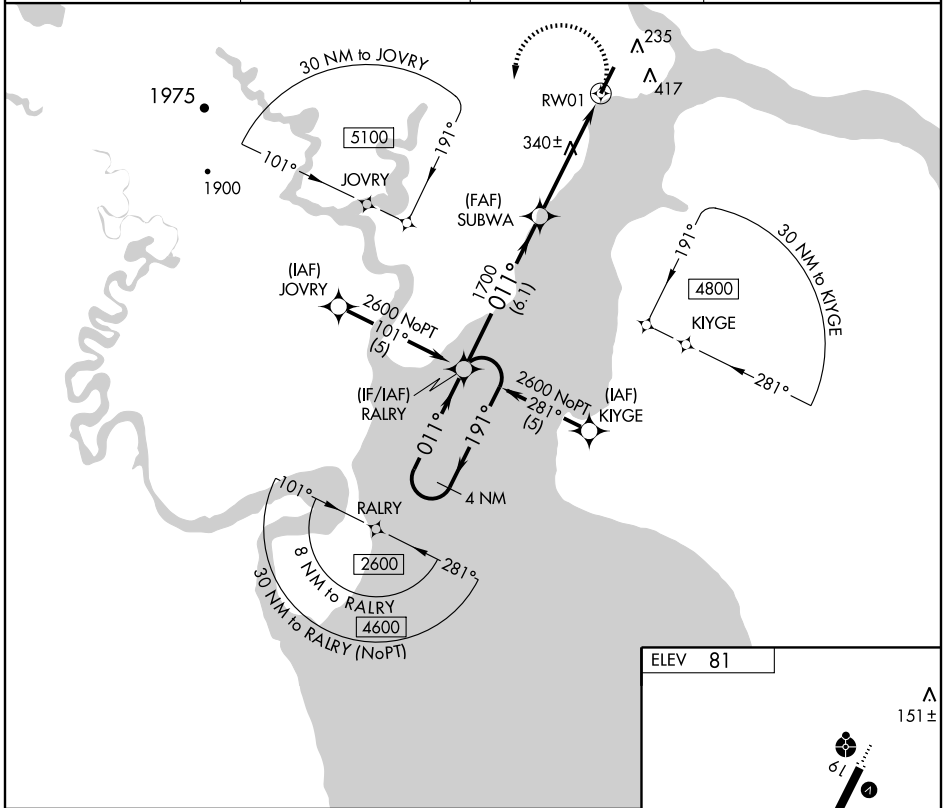
APP CRS	Rwy Idg	<b>6400</b>
<b>011°</b>	TDZE	<b>81</b>
	Apt Elev	<b>81</b>

**▼** Inoperative table does not apply. Circling NA E of Rwy 1-19. DME/DME RNP-0.3 NA. Visibility reduction by helicopters NA. When local altimeter setting not received, use Manokotak altimeter setting and increase all MDA 60 feet and visibility Cats C and D ¼ mile.

**▲**

MISSED APPROACH: Climbing left turn to 2600 direct RALRY and hold.

AWOS-3 <b>135.55</b>	ATIS * <b>125.0</b>	ANCHORAGE CENTER <b>132.75 282.35</b>	DILLINGHAM RADIO <b>123.6 (CTAF) 0</b>
-------------------------	------------------------	--	---



CATEGORY	A	B	C	D
LNVA MDA	640-1	559 (600-1)	640-1½ 559 (600-1½)	640-1¾ 559 (600-1¾)
CIRCLING	640-1	559 (600-1)	640-1½ 559 (600-1½)	640-2 559 (600-2)

AK, 22 OCT 2009 to 17 DEC 2009

AK, 22 OCT 2009 to 17 DEC 2009