

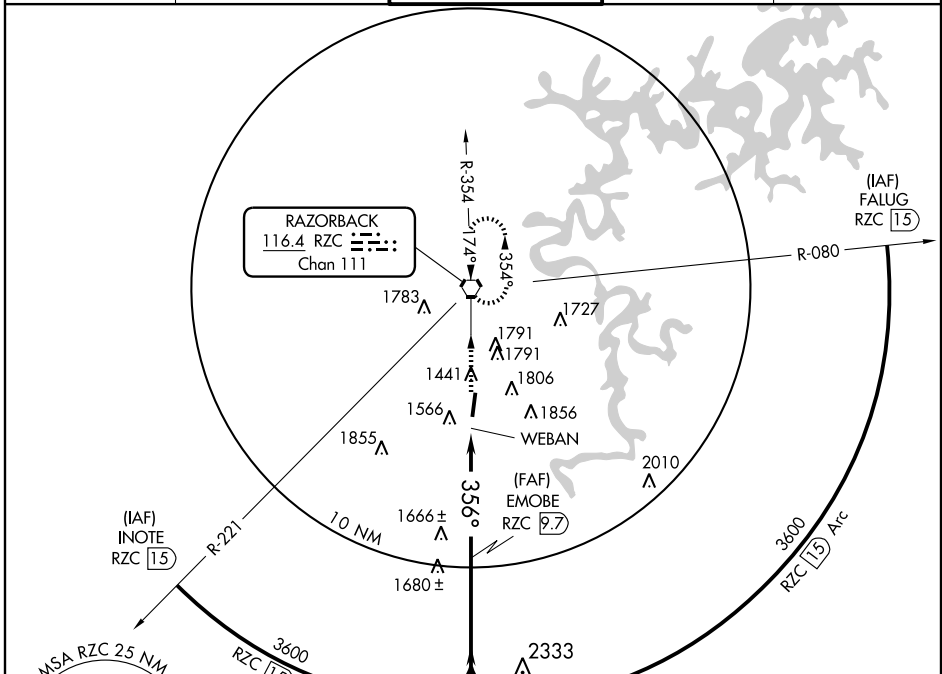
# VOR/DME RWY 36

SPRINGDALE MUNI (ASG)

VORTAC RZC <b>116.4</b> Chan 111	APP CRS <b>356°</b>	Rwy ldg TDZE Apt Elev	<b>5302</b> <b>1353</b> <b>1353</b>
--	------------------------	-----------------------------	---

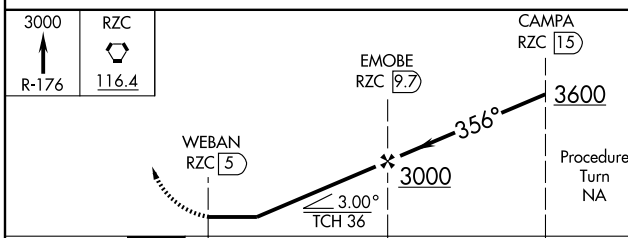
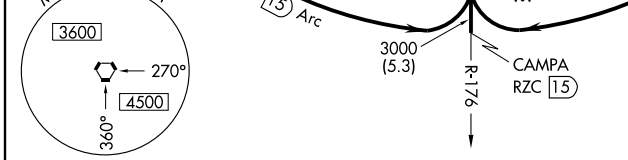
MISSED APPROACH: Climb to 3000 via R-176 to RZC VORTAC and hold.

AWOS-3 <b>124.675</b>	RAZORBACK APP CON* <b>126.6 305.2</b>	SPRINGDALE TOWER* <b>118.2</b> (CTAF) <b>0</b>	GND CON <b>121.6</b>	UNICOM <b>122.95</b>
--------------------------	--	---	-------------------------	-------------------------



SC-1, 22 OCT 2009 to 19 NOV 2009

SC-1, 22 OCT 2009 to 19 NOV 2009



ELEV 1353 Rwy 18 ldg 4939'

3000	RZC	CAMPA
↑	116.4	RZC 15

CATEGORY	A	B	C	D
S-36	1980-1	627 (700-1)	1980-1¾ 627 (700-1¾)	1980-2 627 (700-2)
CIRCLING	1980-1	627 (700-1)	1980-1¾ 627 (700-1¾)	1980-2 627 (700-2)

Knots	60	90	120	150	180
Min:Sec					