

# ILS or LOC RWY 18

SPRINGDALE MUNI (ASG)

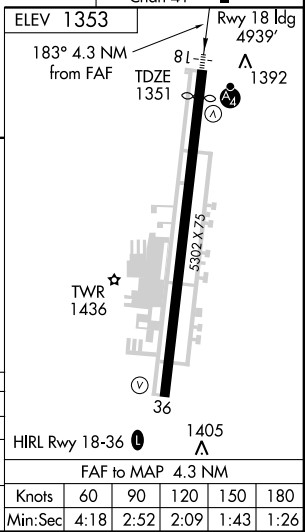
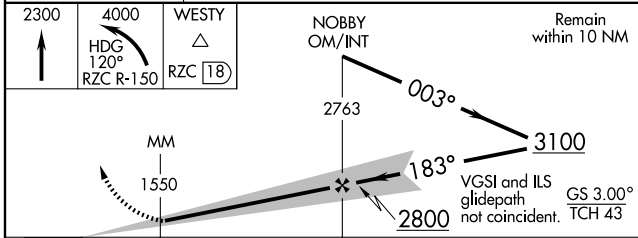
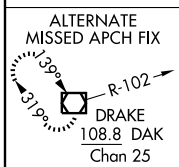
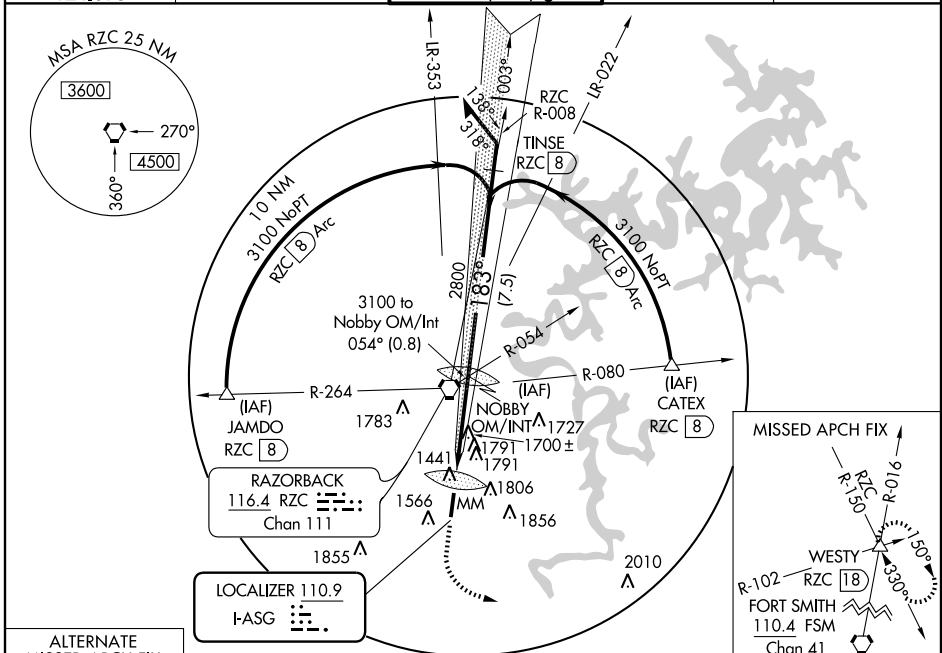
LOC I-ASG <b>110.9</b>	APP CRS <b>183°</b>	Rwy Idg <b>4939</b>
		TDZE <b>1351</b>
		Apt Elev <b>1353</b>

**NA** If local altimeter setting not received, use Northwest Arkansas Muni altimeter setting, and increase all DAs/MDAs 40 feet. Inoperative table does not apply to S-ILS 18, and S-LOC 18 Cat. C. Circling NA east of runway 18-36.

**MALSF**

**MISSED APPROACH:** Climb to 2300 then climbing left turn to 4000 via heading 120° and RZC R-150 to Westy Int/RZC 18 DME and hold.

AWOS-3 <b>124.675</b>	RAZORBACK APP CON* <b>126.6 305.2</b>	SPRINGDALE TOWER* <b>118.2</b> (CTAF) <b>0</b>	GND CON <b>121.6</b>	UNICOM <b>122.95</b>
--------------------------	--	---	-------------------------	-------------------------



CATEGORY	A	B	C	D
S-ILS 18		1551- <sup>3</sup> / <sub>4</sub>	200 (200- <sup>3</sup> / <sub>4</sub> )	
S-LOC 18	1960- <sup>3</sup> / <sub>4</sub>	609 (700- <sup>3</sup> / <sub>4</sub> )	1960-1 <sup>3</sup> / <sub>4</sub> 609 (700-1 <sup>3</sup> / <sub>4</sub> )	1960-2 609 (700-2)
CIRCLING	1960-1	607 (700-1)	1960-1 <sup>3</sup> / <sub>4</sub> 607 (700-1 <sup>3</sup> / <sub>4</sub> )	1960-2 607 (700-2)

SC-1, 22 OCT 2009 to 19 NOV 2009

SC-1, 22 OCT 2009 to 19 NOV 2009