

ELY, NEVADA

AL-5163 (FAA)

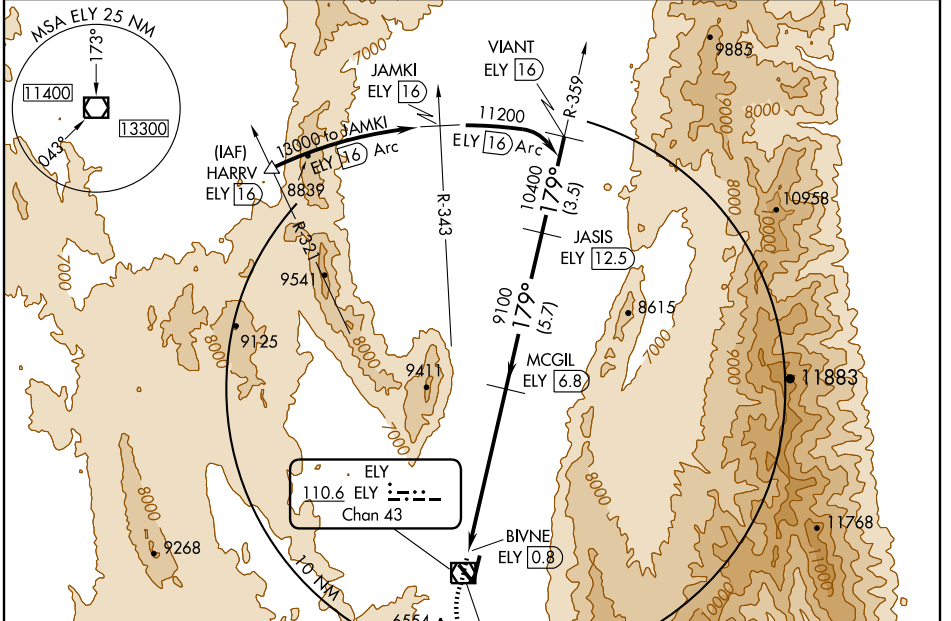
VOR/DME ELY 110.6 Chan 43	APP CRS 179°	Rwy Idg TDZE Apt Elev N/A N/A 6259
--	------------------------	--

VOR/DME-C

ELY AIRPORT-YELLAND FIELD (ELY)

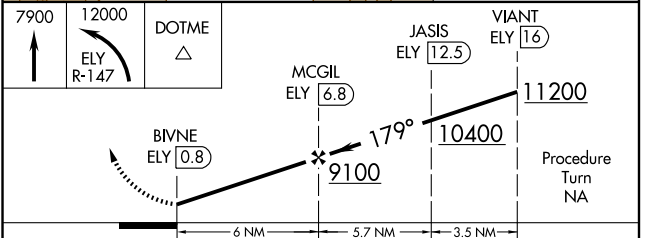
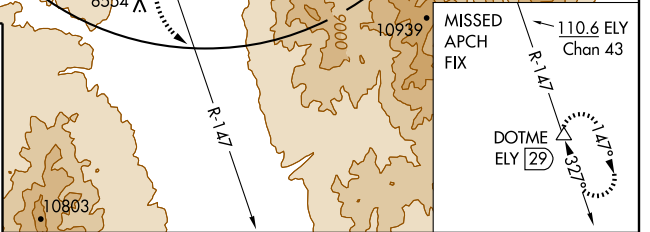
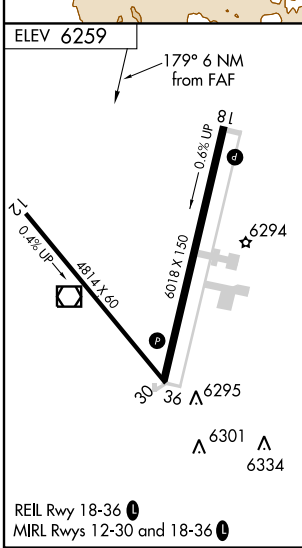
⚠ Circling not authorized southwest of Rwy 12 and 36.
⚠ NA MISSED APPROACH: Climb to 7900 then climbing left turn to 12000 via R-147 to DOTME/ELY 29 DME and hold.

ASOS 120.625	SALT LAKE CENTER 133.45 317.625	UNICOM 122.8 (CTAF) Ⓛ
------------------------	---	--



SW-4, 22 OCT 2009 to 19 NOV 2009

SW-4, 22 OCT 2009 to 19 NOV 2009



CATEGORY	A	B	C	D
CIRCLING	7620-1¼ 1361 (1400-1¼)	7620-1½ 1361 (1400-1½)	7620-3	1361 (1400-3)

ELY, NEVADA
Amdt 2 09295

39° 18'N-114° 51'W

ELY AIRPORT-YELLAND FIELD (ELY)

VOR/DME-C