

ELY, NEVADA

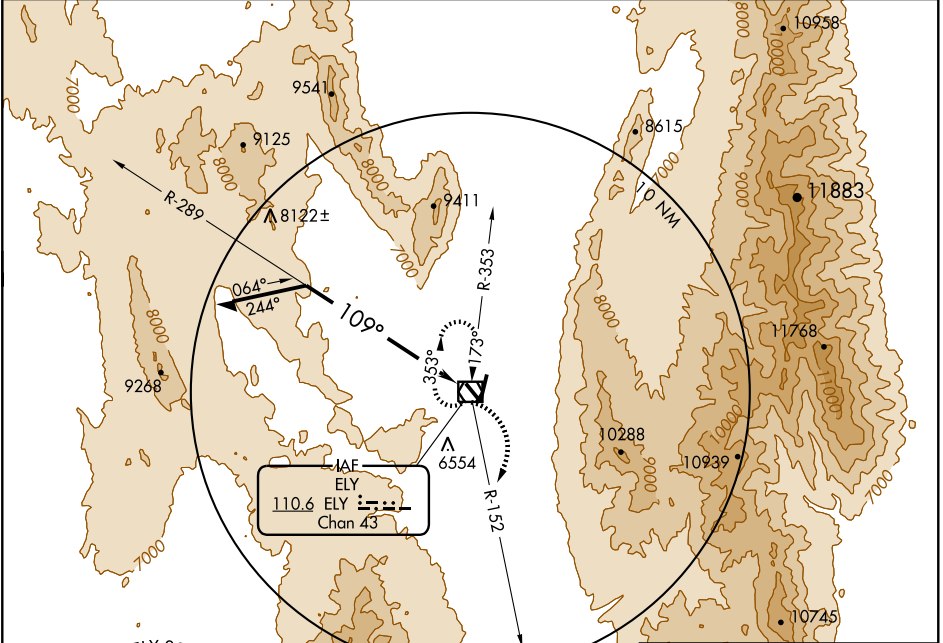
AL-5163 (FAA)

VOR/DME ELY 110.6 Chan 43	APP CRS 109°	Rwy Idg TDZE Apt Elev 6259	N/A N/A 6259
--	------------------------	--	---

VOR-A
ELY AIRPORT-YELLAND FIELD (ELY)

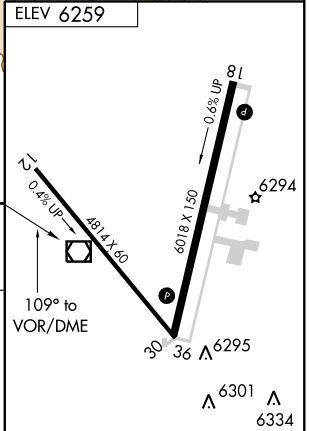
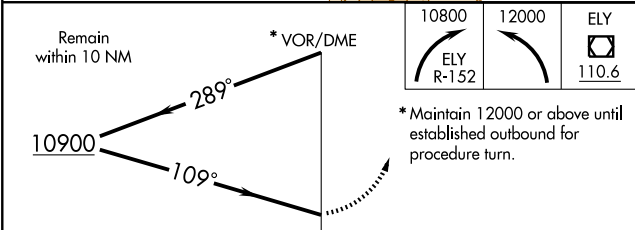
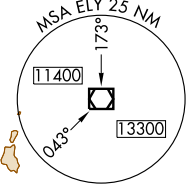
▽ NA MISSED APPROACH: Climbing right turn to 10800 via ELY R-152, then climbing left turn to 12000 direct ELY VOR/DME and hold.

ASOS 120.625	SALT LAKE CENTER 133.45 317.625	UNICOM 122.8 (CTAF) 0
------------------------	---	--



SW-4, 22 OCT 2009 to 19 NOV 2009

SW-4, 22 OCT 2009 to 19 NOV 2009



CATEGORY	A	B	C	D
CIRCLING	9400-1¼ 3141 (3200-1¼)	9400-1½ 3141 (3200-1½)	9400-3	3141 (3200-3)

REIL Rwy 18-36 **0**

MIRL Rwy 12-30 and 18-36 **0**

ELY, NEVADA
Amdt 7 09295

39°18'N-114°51'W

ELY AIRPORT-YELLAND FIELD (ELY)
VOR-A