

TACAN Chan 39	NSI	APCH CRS 289°	Rwy ldg 10,002 TDZE 506 Arpt Elev 506
-------------------------	-----	-------------------------	--

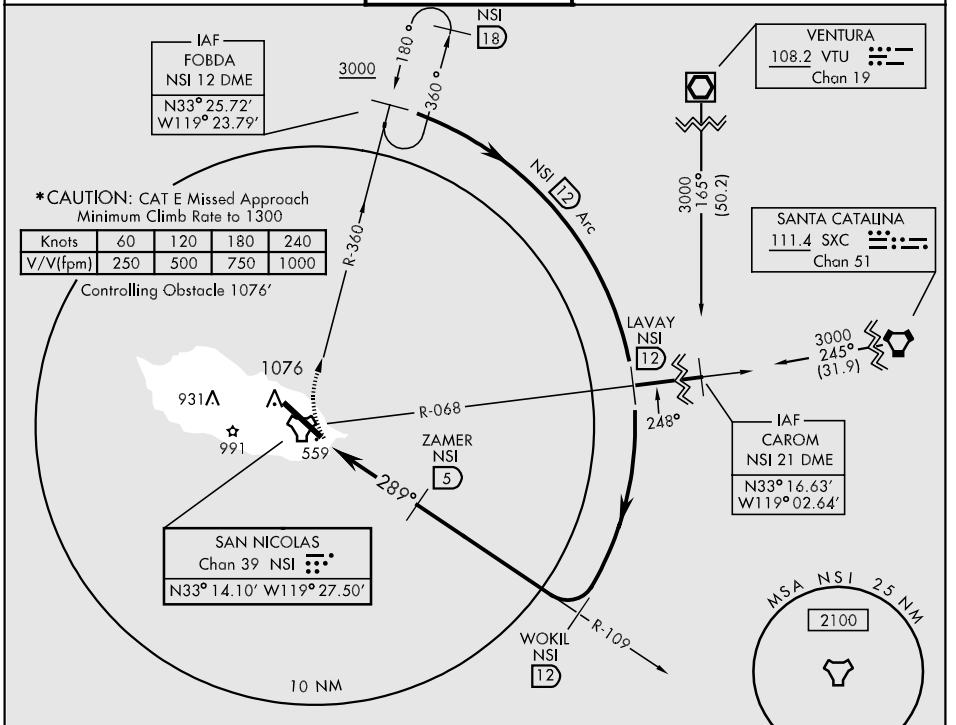
AL-5162 [USN]

SAN NICOLAS ISLAND NOLF (NSI)

**** Circling not authorized W of Rwy 12-30.**

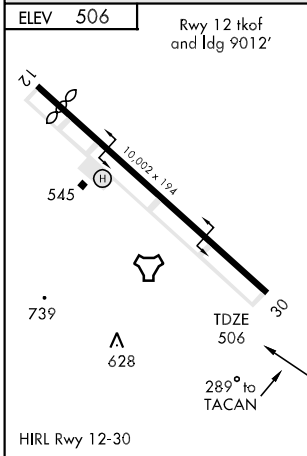
*** MISSED APPROACH: Climbing right turn to 3000, intcpt the NSI R-360 to FOBDA and hold.**

SAN NICOLAS TOWER *
126.85 379.3



SW-3, 22 OCT 2009 to 19 NOV 2009

SW-3, 22 OCT 2009 to 19 NOV 2009



EMERG SAFE ALT 100 NM 10,900

	3000 NSI R-360	FOBDA NSI 12	WOKIL R-109 12	LAVAY R-068 12	CAROM R-068 21
	TACAN	ZAPSU 1.5	ZAMER 5	248° 3000	3000
	3.5 NM		289°	2600	12 Arc
	2.83° TCH 50		1800		
CATEGORY	A	B	C	D	E
S-30	820-1		314	(400-1)	
CIRCLING **	860-1 354 (400-1)	960-1 454 (500-1)	960-1½ 454 (500-1½)	1060-2 554 (600-2)	