

APCH CRS 299°	Rwy ldg 10,002'
TDZE 506	Arpt Elev 506

****Circling not authorized W of Rwy 12-30.**

***MISSED APPROACH:** Climb to 2000 via crs 299° to FEGAV, then climbing rgt turn to 3000 via crs 028° to FOBDA, then turn rgt via crs 103° to CAROM, then turn rgt via crs 215° to TAMAY and hold.

SAN NICOLAS TOWER *
126.85 379.3

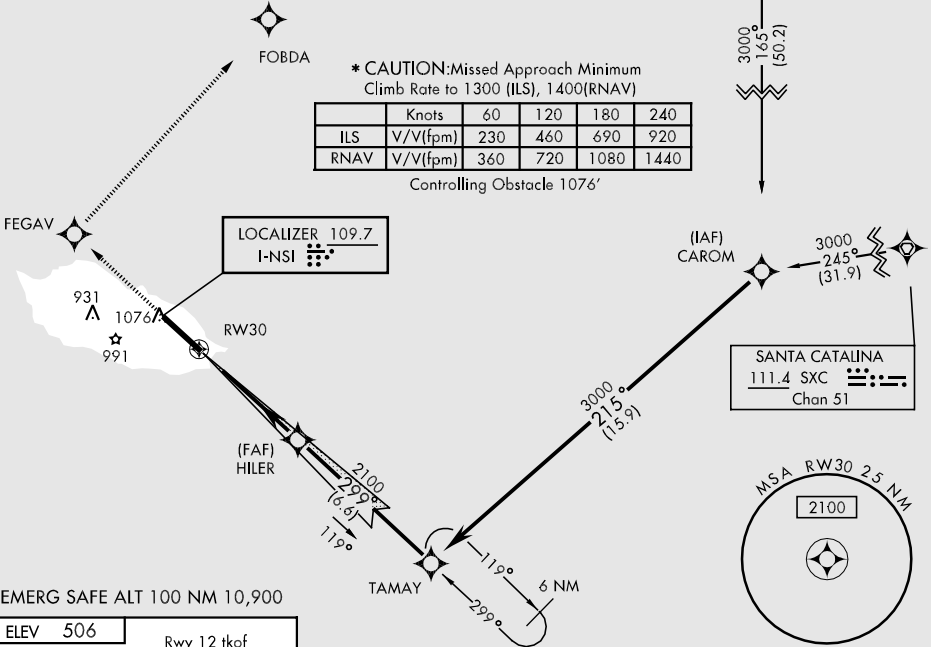
GPS REQUIRED FOR ILS PROCEDURE

VENTURA
108.2 VTU
Chan 19

*** CAUTION:** Missed Approach Minimum
Climb Rate to 1300 (ILS), 1400 (RNAV)

	Knots	60	120	180	240
ILS	V/V (fpm)	230	460	690	920
RNAV	V/V (fpm)	360	720	1080	1440

Controlling Obstacle 1076'

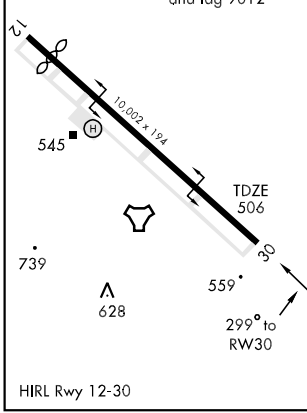


SW-3, 22 OCT 2009 to 19 NOV 2009

SW-3, 22 OCT 2009 to 19 NOV 2009

EMERG SAFE ALT 100 NM 10,900

ELEV 506	Rwy 12 tkof and ldg 9012'
----------	---------------------------



	2000	FEGAV	3000	FOBDA	TAMAY	CAROM
	hdg 299°		crs 028°			
					215°	3000
					3000	GS 3.00° TCH 56
					4.8 NM	6.6 NM
					15.9 NM	
CATEGORY	A	B	C	D	E	
S-ILS 30		706-¾	200	(200-¾)		
LNAV MDA	880-1	374 (400-1)		880-1¼	880-1½	
				374 (400-1¼)	374 (400-1½)	
CIRCLING **	880-1	960-1	960-1½		1060-2	554 (600-2)
	374 (400-1)	454 (500-1)	454 (500-1½)			