

WEST POINT, VIRGINIA

AL-5160 (FAA)

VOR-A

WEST POINT/MIDDLE PENINSULA RGNL (F'YJ)

VORTAC HCM 108.8 Chan 25	APP CRS 337°	Rwy Idg TDZE Apt Elev	N/A N/A 21
--	------------------------	-----------------------------	---------------------------------------

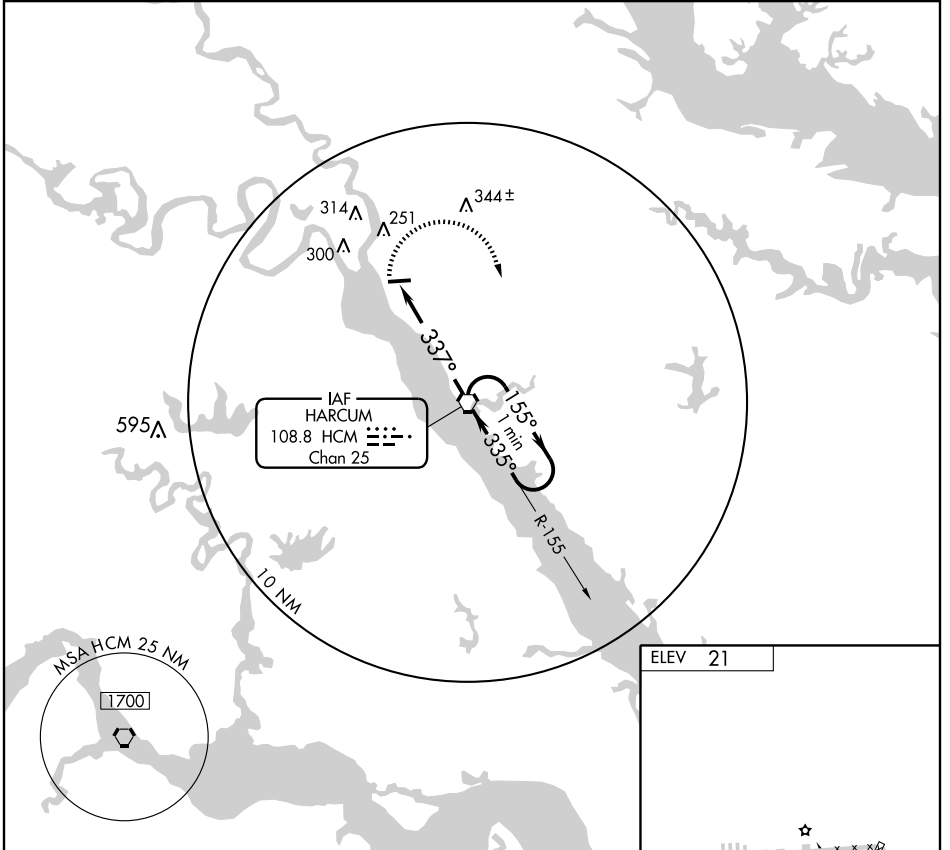
▼ When local altimeter setting not received, use Newport News altimeter setting and increase all MDAs 80 feet and Cat C visibility 1/2 mile.
 ▲ Visibility reduction by helicopters NA.

MISSED APPROACH: Climbing right turn to 1700 direct HCM VORTAC and hold.

AWOS-3
132.825

POTOMAC APP CON
126.4 282.375

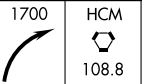
UNICOM
123.0 (CTAF) 0



NE-3, 22 OCT 2009 to 19 NOV 2009

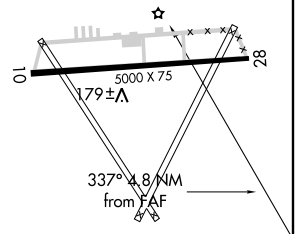
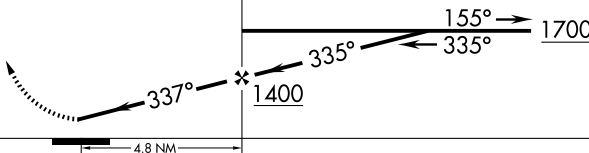
NE-3, 22 OCT 2009 to 19 NOV 2009

ELEV **21**



VORTAC

One Minute Holding Pattern



MIRL Rwy 10-28 **0**

CATEGORY	FAF to MAP 4.8 NM			
	A	B	C	D
CIRCLING	480-1 459 (500-1)	560-1 539 (600-1)	620-1½ 599 (600-1½)	NA
	Knots 60	90	120	150
	Min:Sec 4:48	3:12	2:24	1:55
			180	1:36

WEST POINT, VIRGINIA

WEST POINT/MIDDLE PENINSULA RGNL (F'YJ)

Amtd 4 08213

37°31'N - 76°46'W

VOR-A