

HIBBING, MINNESOTA

AL-5159 (FAA)

VOR/DME HIB <b>110.8</b> Chan <b>45</b>	APP CRS <b>311°</b>	Rwy Idg TDZE Apt Elev	<b>6758</b> <b>1343</b> <b>1353</b>
---	------------------------	-----------------------------	---

# VOR RWY 31

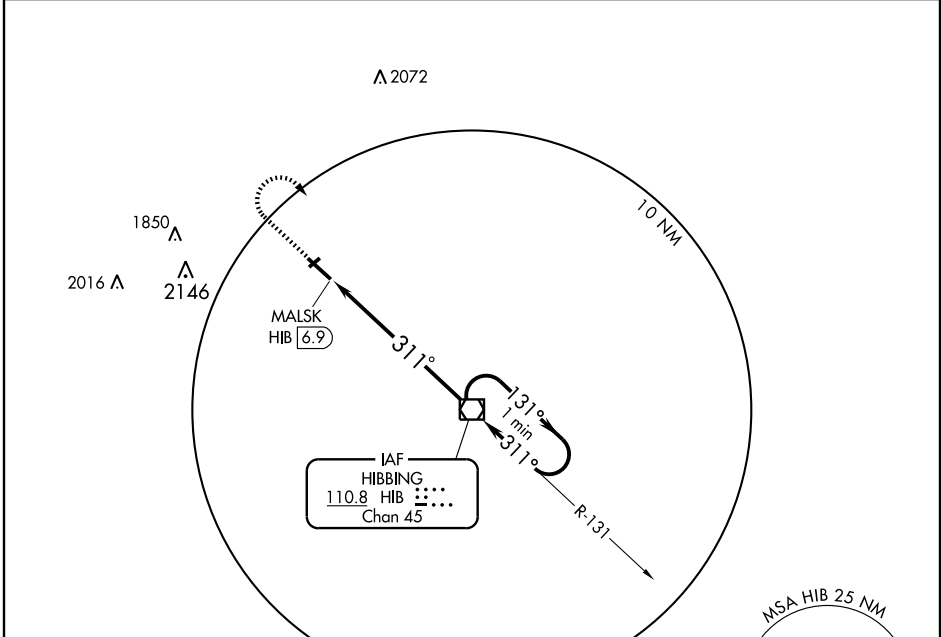
HIBBING/ CHISHOLM-HIBBING (HIB)

**▽** For inoperative MALS, increase S-31 Cat. A and B visibility to 1 mile and Cat D visibility to 1¼ miles.

MALS R 

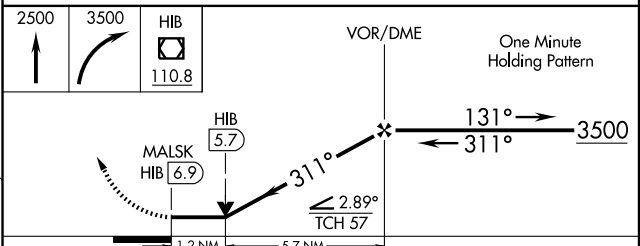
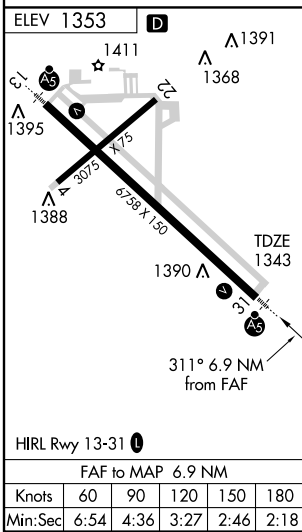
MISSED APPROACH: Climb to 2500 then climbing right turn to 3500 direct HIB VOR/DME and hold.

ASOS <b>126.425</b>	DULUTH APP CON* <b>125.45 255.9</b>	CLNC DEL <b>127.4</b>	UNICOM <b>123.0 (CTAF)</b> 
------------------------	--	--------------------------	---



NC-1, 22 OCT 2009 to 19 NOV 2009

NC-1, 22 OCT 2009 to 19 NOV 2009



CATEGORY	A	B	C	D
S-31	1760-¾ 417 (500-¾)			1760-1 417 (500-1)
CIRCLING	1820-1 467 (500-1)	1840-1 487 (500-1)	1840-1½ 487 (500-1½)	1920-2 567 (600-2)

HIBBING, MINNESOTA  
Amdt 17 09295

47°23'N - 92°50'W

# HIBBING/ CHISHOLM-HIBBING (HIB) VOR RWY 31