

HIBBING, MINNESOTA

AL-5159 (FAA)

VOR/DME HIB 110.8 Chan 45	APP CRS 131°	Rwy Idg TDZE Apt Elev	6758 1353 1353
--	------------------------	-----------------------------	---

VOR RWY 13

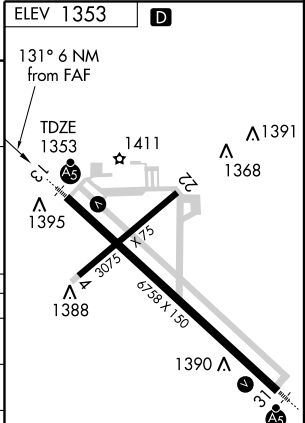
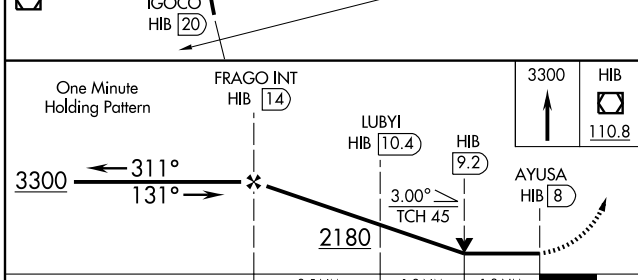
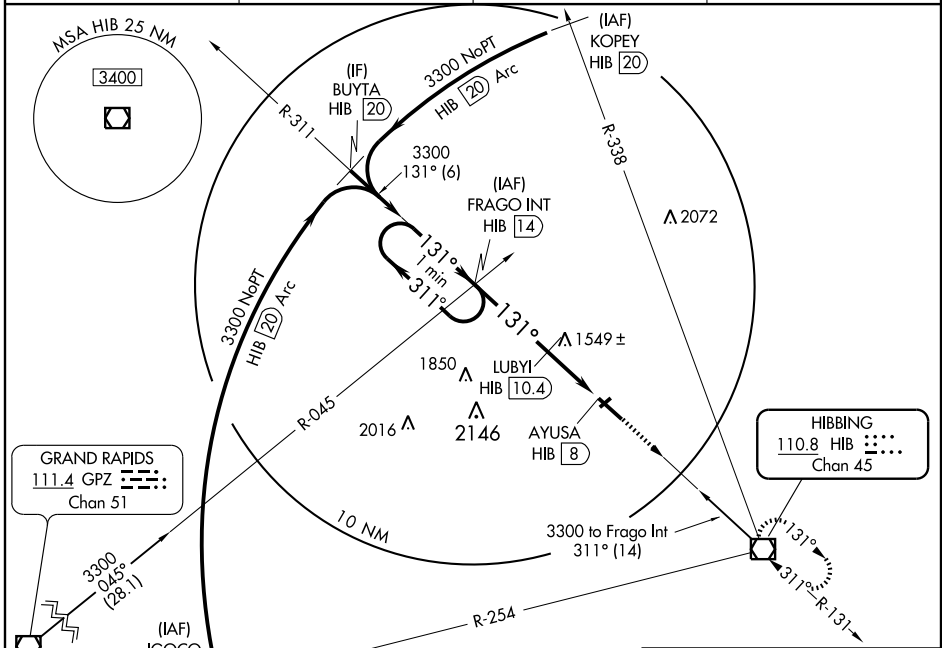
HIBBING/CHISHOLM-HIBBING (HIB)

▼ For inoperative MALSRS increase S-13 Cat A to 1 mile.
▲ LUBYI FIX MINIMUMS: Increase Cat A and B to 1 mile.



MISSED APPROACH: Climb to 3300 direct HIB VOR/DME and hold.

ASOS 126.425	DULUTH APP CON* 125.45 255.9	CLNC DEL 127.4	UNICOM 123.0 (CTAF) 0
------------------------	--	--------------------------	---------------------------------



CATEGORY	A	B	C	D
S-13	2180- ³ / ₄	827 (900- ³ / ₄)	2180-2 827 (900-2)	2180-2 ¹ / ₄ 827 (900-2 ¹ / ₄)
CIRCLING	2180-1 827 (900-1)	2180-1 ¹ / ₄ 827 (900-1 ¹ / ₄)	2180-2 ¹ / ₂ 827 (900-2 ¹ / ₂)	2180-2 ³ / ₄ 827 (900-2 ³ / ₄)
LUBYI FIX MINIMUMS				
S-13	1800- ³ / ₄ 447 (500- ³ / ₄)		1800-1 447 (500-1)	
CIRCLING	1820-1 467 (500-1)	1840-1 487 (500-1)	1840-1 ¹ / ₂ 487 (500-1 ¹ / ₂)	1920-2 567 (600-2)

FAF to MAP 6 NM					
Knots	60	90	120	150	180
Min:Sec	6:00	4:00	3:00	2:24	2:00

HIBBING, MINNESOTA
Amdt 13 09295

47°23'N - 92°50'W

HIBBING/CHISHOLM-HIBBING (HIB) VOR RWY 13

NC-1, 22 OCT 2009 to 19 NOV 2009

NC-1, 22 OCT 2009 to 19 NOV 2009