

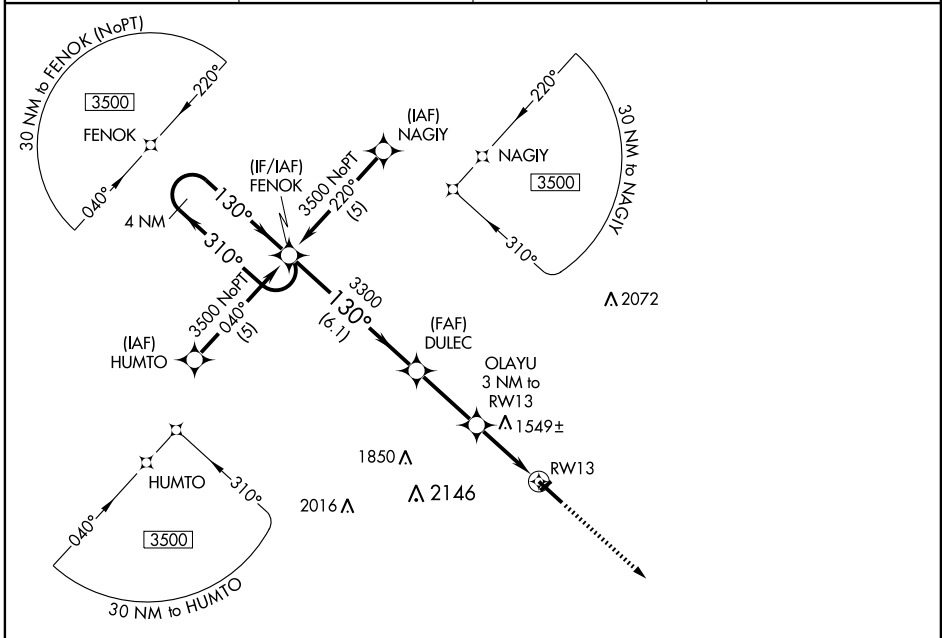
RNAV (GPS) RWY 13

HIBBING/CHISHOLM-HIBBING (HIB)

APP CRS 130°	Rwy Idg TDZE Apt Elev	6758 1353 1353
------------------------	-----------------------------	---

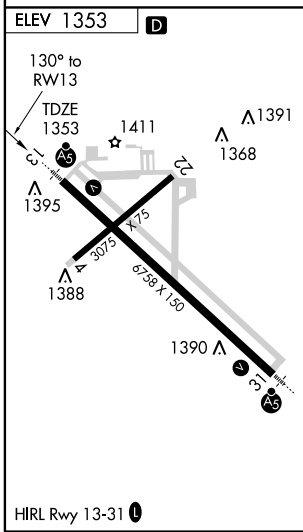
<p>∇ Circling not authorized at night to Rwy 4-22.</p> <p>▲ NA GPS or RNP-0.3 required. DME/DME RNP-0.3 NA. For inoperative MALSR, increase LNAV MDA Cat. A and B to 1 mile.</p>	<p>MALSR</p>	<p>MISSED APPROACH: Climb to 3500 direct CEKSA WP and hold.</p>
--	--------------	---

ASOS 126.425	DULUTH APP CON* 125.45 255.9	CLNC DEL 127.4	UNICOM 123.0 (CTAF)
------------------------	--	--------------------------	-------------------------------



NC-1, 22 OCT 2009 to 19 NOV 2009

NC-1, 22 OCT 2009 to 19 NOV 2009



<p>4 NM Holding Pattern</p> <p>FENOK</p> <p>DULEC</p> <p>OLAYU 3 NM to RWY 13</p> <p>3500 ← 310° / 130° → 3300</p> <p>3.06° TCH 45</p> <p>2340</p> <p>1.3 NM to RWY 13</p> <p>RWY 13</p> <p>6.1 NM 2.9 NM 1.7 NM 1.3</p>	<p>3500</p> <p>CEKSA</p>														
	<table border="1"> <thead> <tr> <th>CATEGORY</th> <th>A</th> <th>B</th> <th>C</th> <th>D</th> </tr> </thead> <tbody> <tr> <td>LNAV MDA</td> <td colspan="3">1800-³/₄ 447 (500-³/₄)</td> <td>1800-1 447 (500-1)</td> </tr> <tr> <td>CIRCLING</td> <td>1820-1 467 (500-1)</td> <td>1840-1 487 (500-1)</td> <td>1840-1½ 487 (500-1½)</td> <td>1920-2 567 (600-2)</td> </tr> </tbody> </table>	CATEGORY	A	B	C	D	LNAV MDA	1800- ³ / ₄ 447 (500- ³ / ₄)			1800-1 447 (500-1)	CIRCLING	1820-1 467 (500-1)	1840-1 487 (500-1)	1840-1½ 487 (500-1½)
CATEGORY	A	B	C	D											
LNAV MDA	1800- ³ / ₄ 447 (500- ³ / ₄)			1800-1 447 (500-1)											
CIRCLING	1820-1 467 (500-1)	1840-1 487 (500-1)	1840-1½ 487 (500-1½)	1920-2 567 (600-2)											