

ILS or LOC RWY 31
HIBBING/CHISHOLM-HIBBING (HIB)

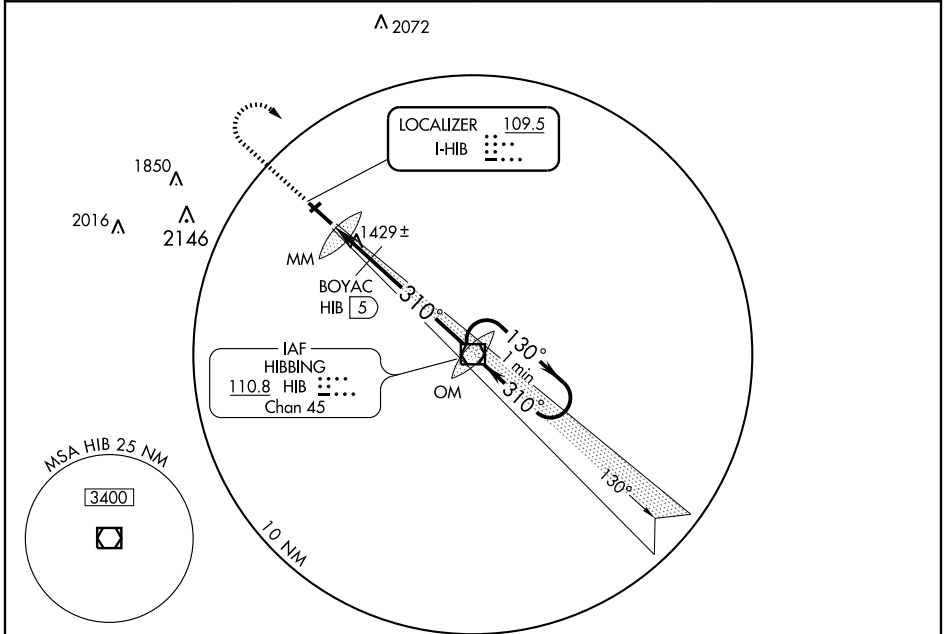
LOC I-HIB 109.5	APP CRS 310°	Rwy Idg 6758
		TDZE 1343
		Apt Elev 1353

▼ For inoperative MALSR, increase BOYAC FIX MINIMUMS S-LOC 31 Category D visibility to 1. #DME from HIB VOR/DME.

MALSR
AS

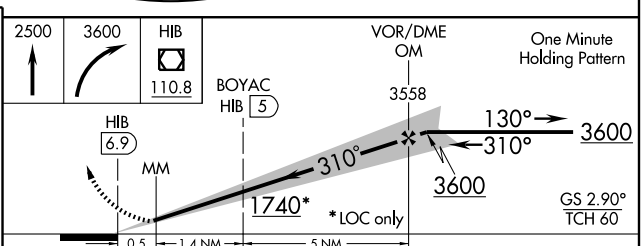
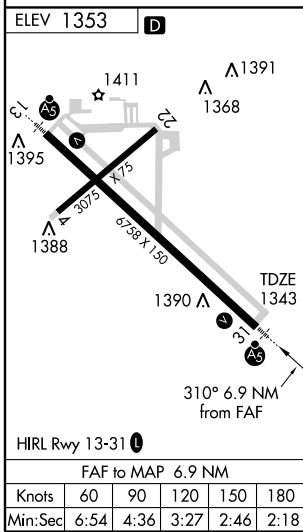
MISSED APPROACH: Climb to 2500 then climbing right turn to 3600 direct HIB VOR/DME and hold.

ASOS 126.425	DULUTH APP CON* 125.45 255.9	CLNC DEL 127.4	UNICOM 123.0 (CTAF) 0
------------------------	--	--------------------------	---------------------------------



NC-1, 22 OCT 2009 to 19 NOV 2009

NC-1, 22 OCT 2009 to 19 NOV 2009



	2500	3600	HIB 110.8	VOR/DME OM 3558	One Minute Holding Pattern
			BOYAC HIB 5		
			HIB 6.9		
			MM		
				1740*	*LOC only
				130°	3600
				310°	3600
					GS 2.90° TCH 60
CATEGORY	A	B	C	D	
S-ILS 31	1543-½ 200 (200-½)				
S-LOC 31	1740-½ 397 (400-½)			1740-¾ 397 (400-¾)	
CIRCLING	1820-1 467 (500-1)	1840-1 487 (500-1)	1840-1½ 487 (500-1½)		1920-2 567 (600-2)
BOYAC FIX MINIMUMS #					
S-LOC 31	1680-½ 337 (400-½)			1680-¾ 337 (400-¾)	
CIRCLING	1820-1 467 (500-1)	1840-1 487 (500-1)	1840-1½ 487 (500-1½)		1920-2 567 (600-2)