

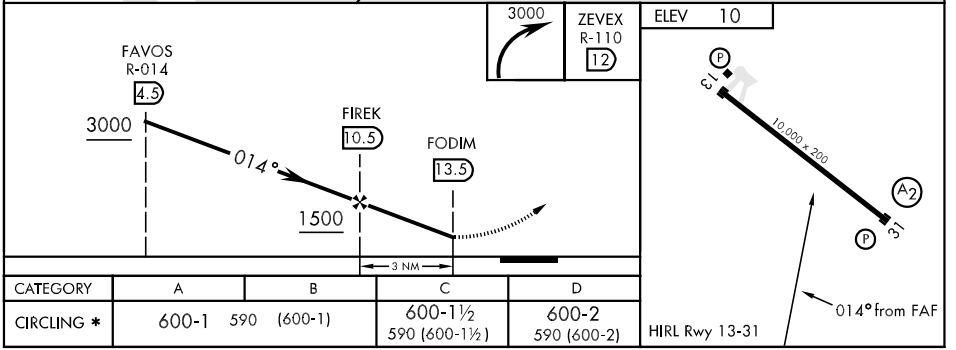
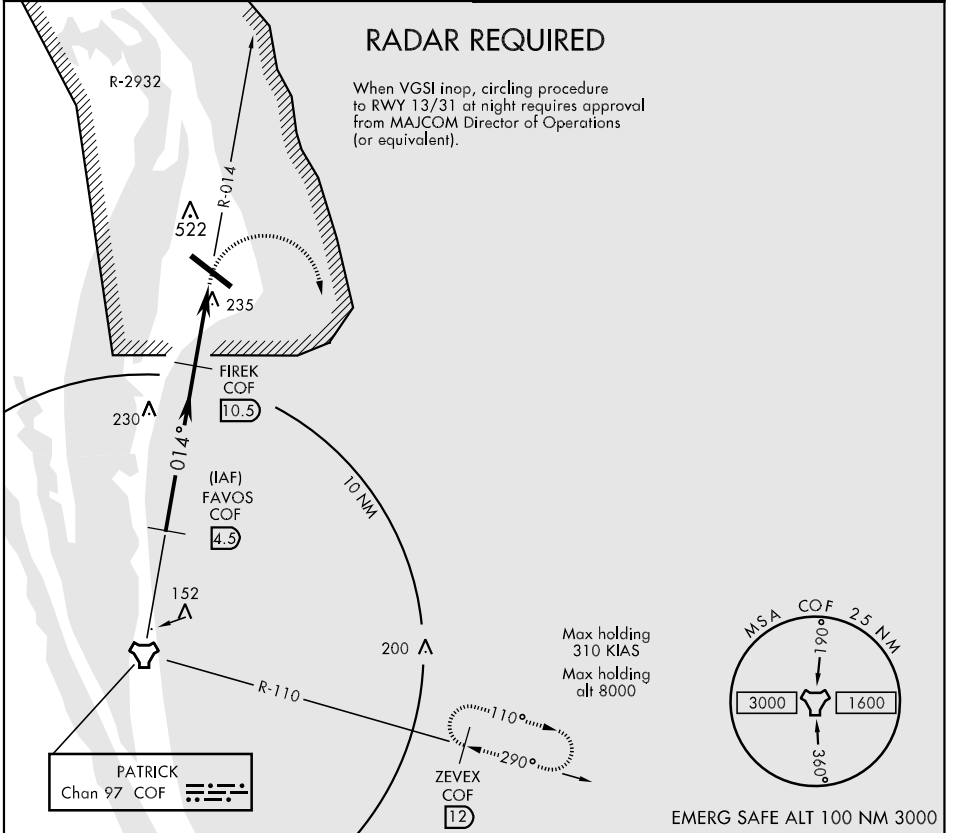
TACAN Chan <b>97</b>	COF	APCH CRS <b>014°</b>	Rwy Idg <b>10,000</b> TDZE <b>N/A</b> Arpt Elev <b>10</b>	AL-5157 [USAF]	CAPE CANAVERAL AFS SKID STRIP (KXMR)
----------------------	-----	----------------------	---	----------------	--------------------------------------

▼ \* Circling not authorized N of Rwy 13-31.
 MISSED APPROACH: Turn right direct ZEVEX (COF R-110/12 DME) maintain 3000 and hold.

ORLANDO APP CON <b>134.95 281.425</b>	CAPE TOWER ★ <b>118.625 143.15 239.05</b>
--	--

**RADAR REQUIRED**

When VGSI inop, circling procedure to RWY 13/31 at night requires approval from MAJCOM Director of Operations (or equivalent).



SE-3, 22 OCT 2009 to 19 NOV 2009

SE-3, 22 OCT 2009 to 19 NOV 2009