

COCOA BEACH, FLORIDA

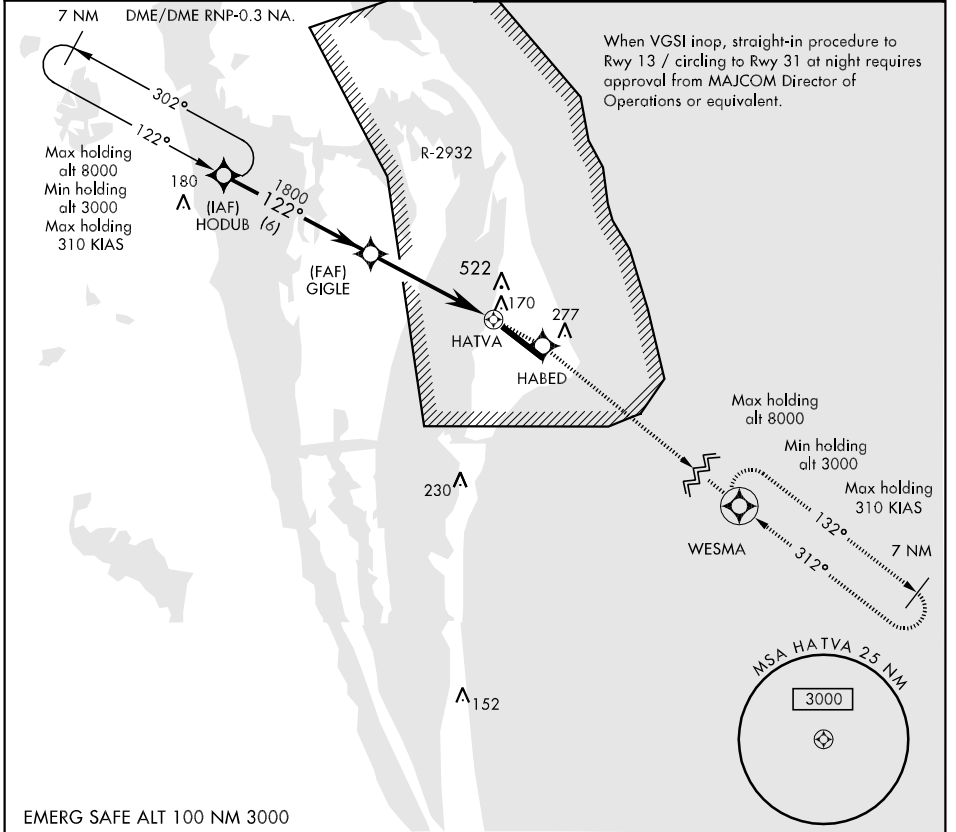
RNAV (GPS) RWY 13

APCH CRS	Rwy ldg	10,000
122°	TDZE	10
	Arpt Elev	10

AL-5157 [USAF] CAPE CANAVERAL AFS SKID STRIP (KXMR)

▼ *Circling not authorized NE of Rwy 13-31. MISSED APPROACH: Climb to 3000 direct HABED, then direct to WESMA and hold.

ORLANDO APP CON 134.95 281.425 CAPE TOWER ★ 118.625 143.15 239.05



	HODUB 3000		GIGLE		HATVA		3000 HABED WESMA ELEV 10	
	122°		1800		5 NM		122° 5.5 NM from GIGLE	
	2.94° TCH 79						10,000 + 200	
CATEGORY	A	B	C	D	E			
LNAV / MDA	560/50	550 (600-1)	560-1½ 550 (600-1½)	560-1¾ 550 (600-1¾)	560-2 550 (600-2)			
CIRCLING *	600-1 590 (600-1)	760-1¼ 750 (800-1¼)	760-2¼ 750 (800-2¼)	760-2½ 750 (800-2½)	760-2¾ 750 (800-2¾)			
	HIRL Rwy 13-31							

COCOA BEACH, FLORIDA
Orig 09239

28° 28' N - 80° 34' W

CAPE CANAVERAL AFS SKID STRIP (KXMR)

RNAV (GPS) RWY 13

SE-3, 22 OCT 2009 to 19 NOV 2009

SE-3, 22 OCT 2009 to 19 NOV 2009