

# RNAV (GPS) RWY 25

MANVILLE/ CENTRAL JERSEY RGNL (47N)

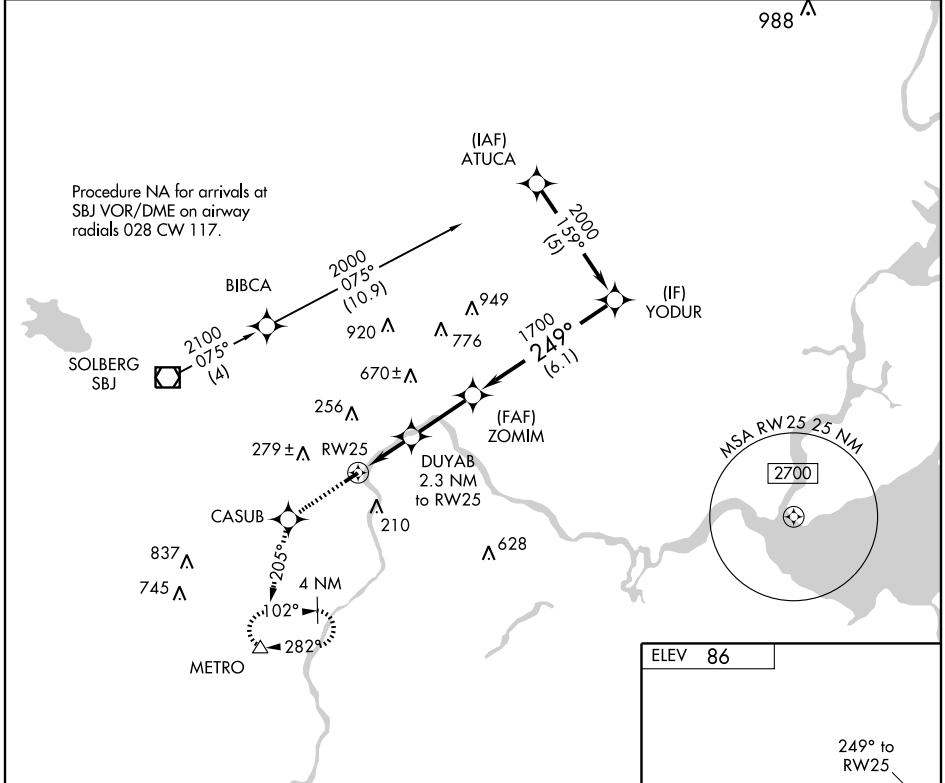
APP CRS <b>249°</b>	Rwy Idg <b>3244</b>
	TDZE <b>82</b>
	Apt Elev <b>86</b>

**▽** DME/DME RNP-0.3 NA. Visibility reduction by helicopters NA. Use Trenton altimeter setting; if not received use Newark altimeter setting.

**▲** NA

MISSED APPROACH: Climb to 2000 direct CASUB and via 205° track to METRO and hold.

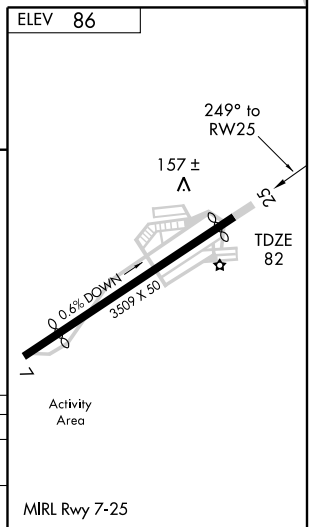
TRENTON ASOS <b>126.77</b>	NEW YORK APP CON <b>132.8 379.9</b>	GCO <b>121.725</b>	UNICOM <b>122.7</b> (CTAF)
-------------------------------	--	-----------------------	-------------------------------



NE-2, 22 OCT 2009 to 19 NOV 2009

NE-2, 22 OCT 2009 to 19 NOV 2009

2000	CASUB	METRO		
↑	TRK 205°	△		
CATEGORY	A	B	C	D
LNNAV MDA	480-1 398 (400-1)			NA
CIRCLING	540-1	454 (500-1)	700-1¾ 614 (700-1¾)	NA



# RNAV (GPS) RWY 25